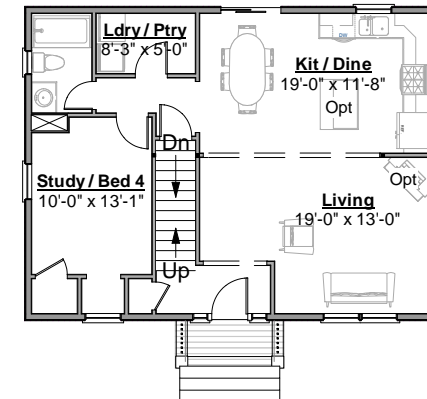




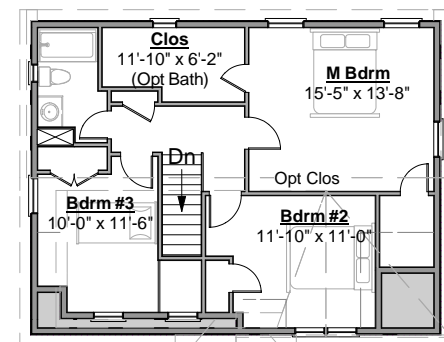
© 2011 Wendy Welton
Great Scott Cape

Artform Home Plans

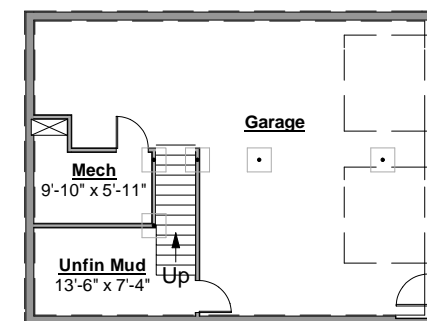
First Floor



Second Floor



Basement



Great Scott Cape

410.001 © 2011 Wendy Welton, all rights reserved

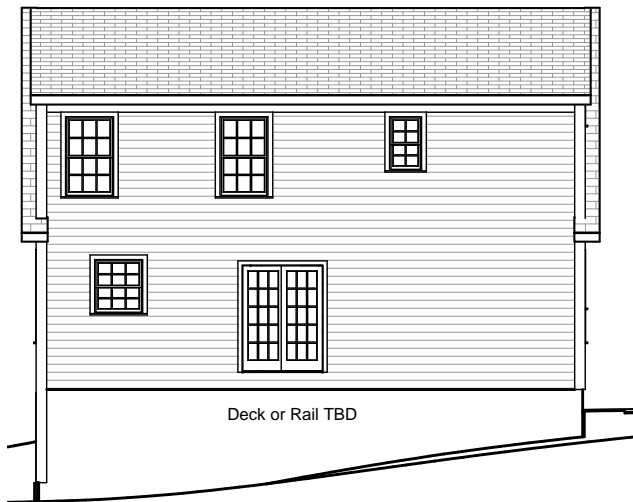
	<u>As Shown</u>	<u>Unf/Future</u>	<u>Total</u>	<u>Apt</u>	<u>Grand Total</u>
Floor 1	884		884		
Floor 2	832		832		
Above Grade	1716		1716		
Lower Level					
Total					
Bedrooms	3	1	4		
Bathrooms	2	1	3		

Some features Optional. Written specs / P&S govern. Dimensions supercede Square Foot data. PDF 6/9/2011

Great Scott Cape

410.001

© 2011 Wendy Welton, all rights reserved



Some items shown are optional and/or may vary. Builder's written specifications always govern.

1. Gas fireplace and it's surround or mantel
2. Kitchen - island, cabinet style & trim, countertop material, etc.
3. Door styles and trim
4. Window grilles and trim, window treatments
5. Stair balusters or low walls at stairs
6. Lighting
7. Material selections (flooring, siding, roofing, paint colors, etc.)
8. Other furnishings
9. Landscaping, paving and walkways
10. Gutters, shutters and other exterior trim components
11. Deck – size, railing style, stair location, etc.
12. Amount of exposed basement and/or wood framed walls at basement.

These images are not of any specific building site. Sun and view through windows will vary, as will the site around the house on the exterior and the slope of the land.

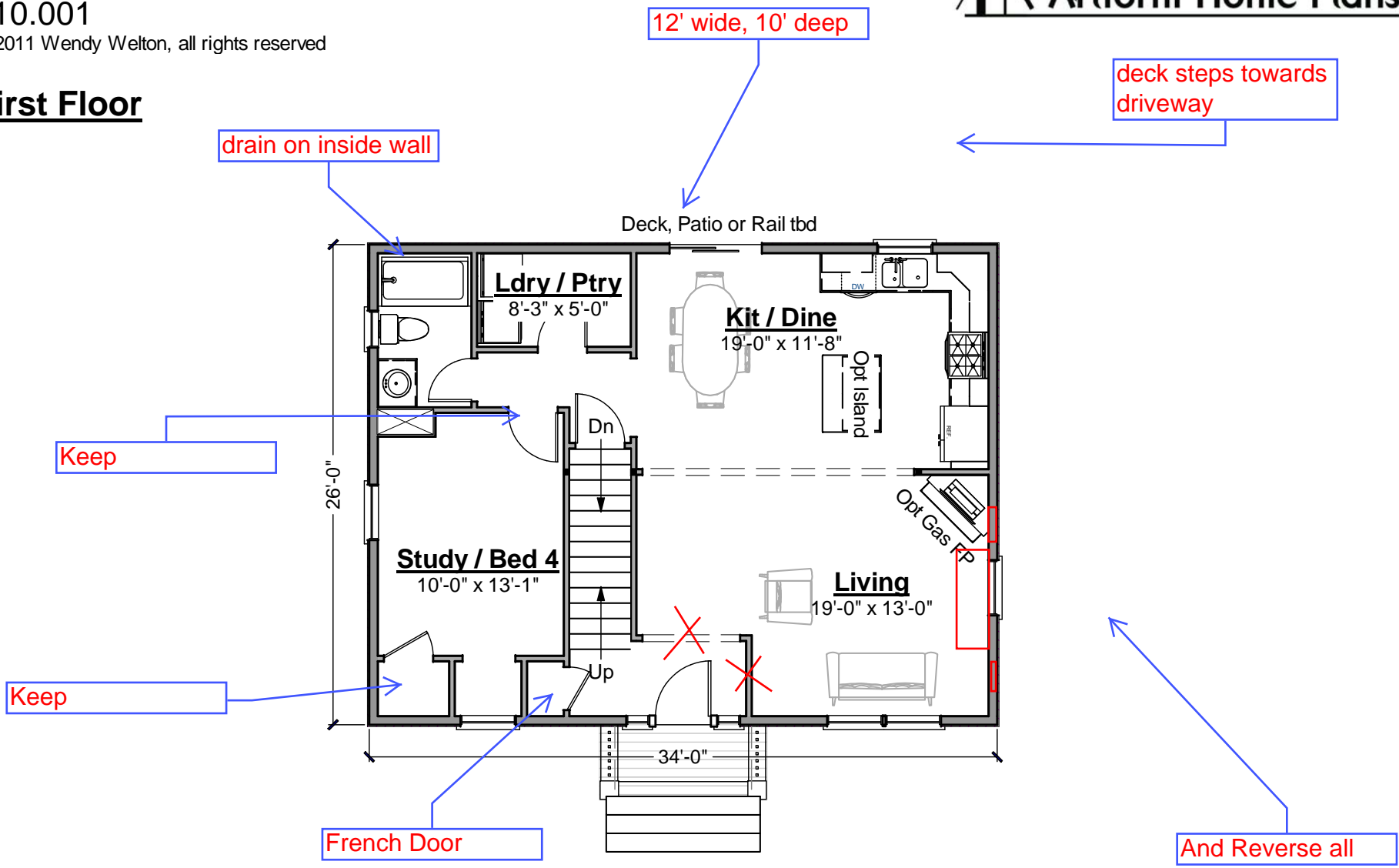
Great Scott Cape

410.001

© 2011 Wendy Welton, all rights reserved



First Floor

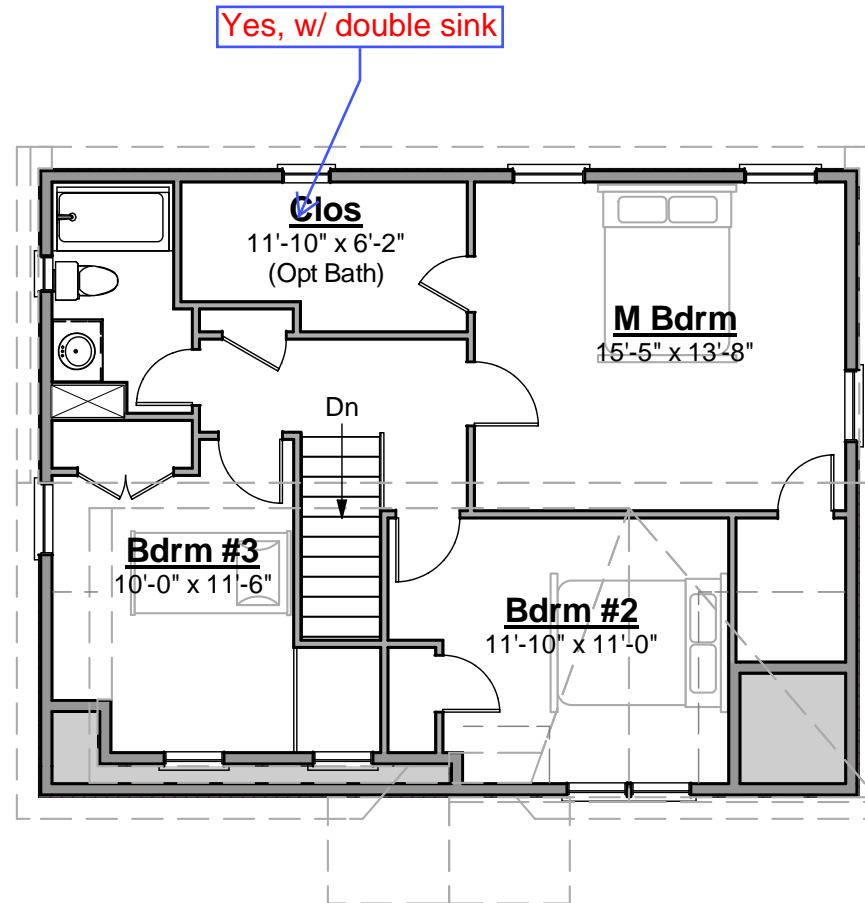


Great Scott Cape

410.001

© 2011 Wendy Welton, all rights reserved

Second Floor



Great Scott Cape

410.001

© 2011 Wendy Welton, all rights reserved

Lower Level

