

## High Skipper

389.004 © 2011 Wendy Welton, all rights reserved

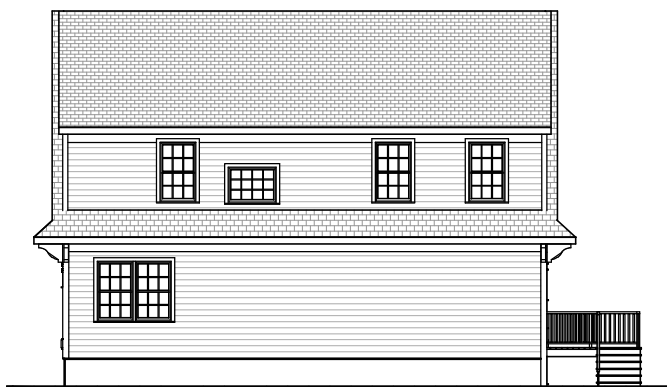
	<u>As Shown</u>	<u>Optional</u>	<u>Total</u>	<u>Apt</u>	<u>Grand Total</u>
Floor 1	1179		1179		
Floor 2	1224		1224		
<b>Above Grade</b>	<b>2403</b>		<b>2403</b>		
Lower Level					
Total					
Bedrooms	3		3		
Bathrooms	2 1/2		2 1/2		

Some features Optional. Written specs / P&S govern. Dimensions supercede Square Foot data. PDF 7/1/2011

# High Skipper

389.004

© 2011 Wendy Welton, all rights reserved



Some items shown are optional and/or may vary. Builder's written specifications always govern.

1. Gas fireplace and it's surround or mantel
2. Kitchen - island, cabinet style & trim, countertop material, etc.
3. Door styles and trim
4. Window grilles and trim, window treatments
5. Stair balusters or low walls at stairs
6. Lighting
7. Material selections (flooring, siding, roofing, paint colors, etc.)
8. Other furnishings
9. Landscaping, paving and walkways
10. Gutters, shutters and other exterior trim components
11. Deck – size, railing style, stair location, etc.
12. Amount of exposed basement and/or wood framed walls at basement.

These images are not of any specific building site. Sun and view through windows will vary, as will the site around the house on the exterior and the slope of the land.

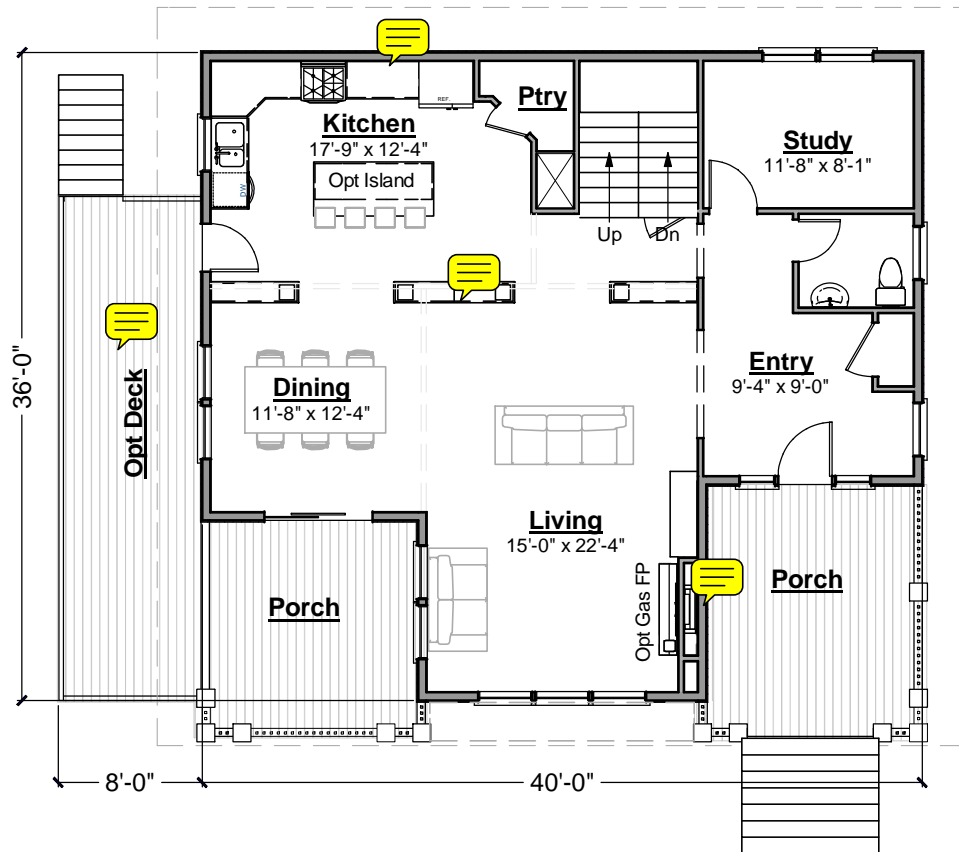
# High Skipper

389.004

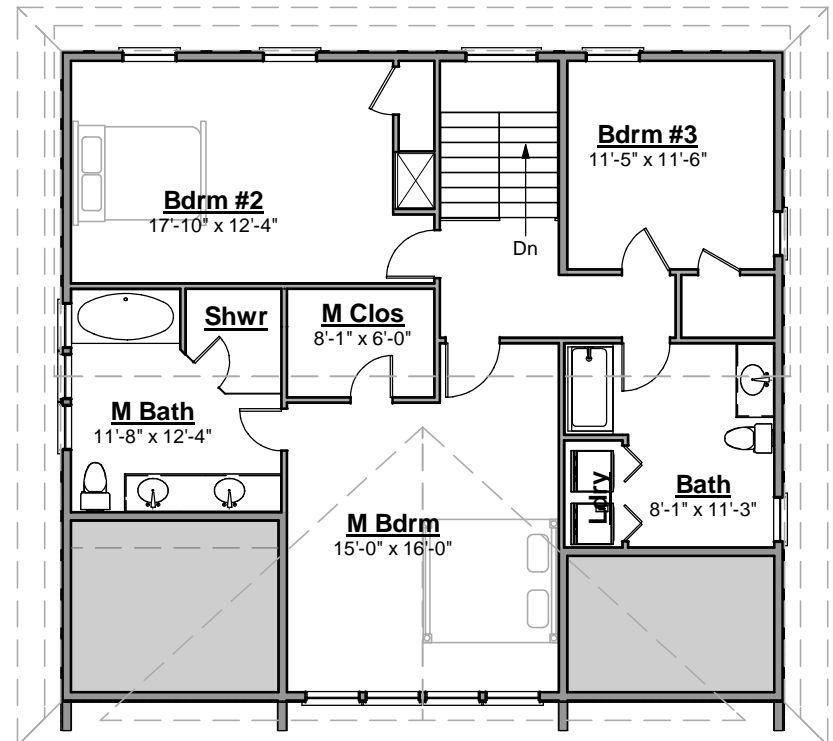
© 2011 Wendy Welton, all rights reserved



## First Floor



## Second Floor



# High Skipper

389.004

© 2011 Wendy Welton, all rights reserved

## Lower Level

