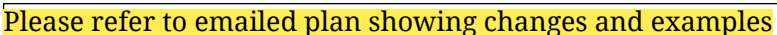


Ceiling Height	
Shown	8'-0"
Possible*	8'-0"

1. 9' ceilings house only
2. 3 panel casement kitch window (fig 1)
3. Glass doors on sunroom w transom (fig 4)
4. Transoms above all 4 season windows and 2 living room windows (fig 2-4)
5. Pocket doors -front br bathroom door, master closet, coat closet at entrance (fig 5)
- 6.) Wider garage bay to accommodate window. (fig 5)
- 7.) 9' ceilings in basement



© 2013 Art Form Architecture, Inc. ALL RIGHTS RESERVED.  
You may not build this Design without purchasing a License to Build (as defined in our Terms). Unauthorized changes are not permitted and violate copyright laws, which provide substantial penalties for infringement.

We are not responsible for typographical errors.

Twelve Month, LLC

dotloop verified  
03/05/21 7:37 AM EST  
MCAO-AYVI -I IDT-YDRG

*Adam Anderson*

dotloop verified  
03/04/21 8:35 PM EST  
RBHB-Y6JT-TX1N-2OTH

# Raspberry Biscotti Changes

Lot 39

Adam Anderson

## Change Requests

- 9ft Ceilings
- Fireplace
- A/C
- Hardwood in all rooms
- Substitute red oak with hardwood material TBD
- Wider kitchen window (see Fig. 1)
- Sunroom entrance (see Fig. 4)
- Transoms above double hung windows (see Fig. 2-4)
- Pocket Doors in front bedroom/bathroom, master closet, and entry closet as per 564.144.v24 KR (see Fig. 5)
- Wider garage with window as per 564.144.v24 KR (see Fig. 5)
- Composite decking (e.g., TREX) instead of pressure treated



Fig. 1

*Kitchen window features center picture window in original plan width now flanked by two casement windows*





Fig. 2  
*Double hung windows in living room with transoms above*



Fig. 3  
*Double hung windows in sunroom with transoms above*



Fig. 4  
*Sunroom entrance with transoms above*

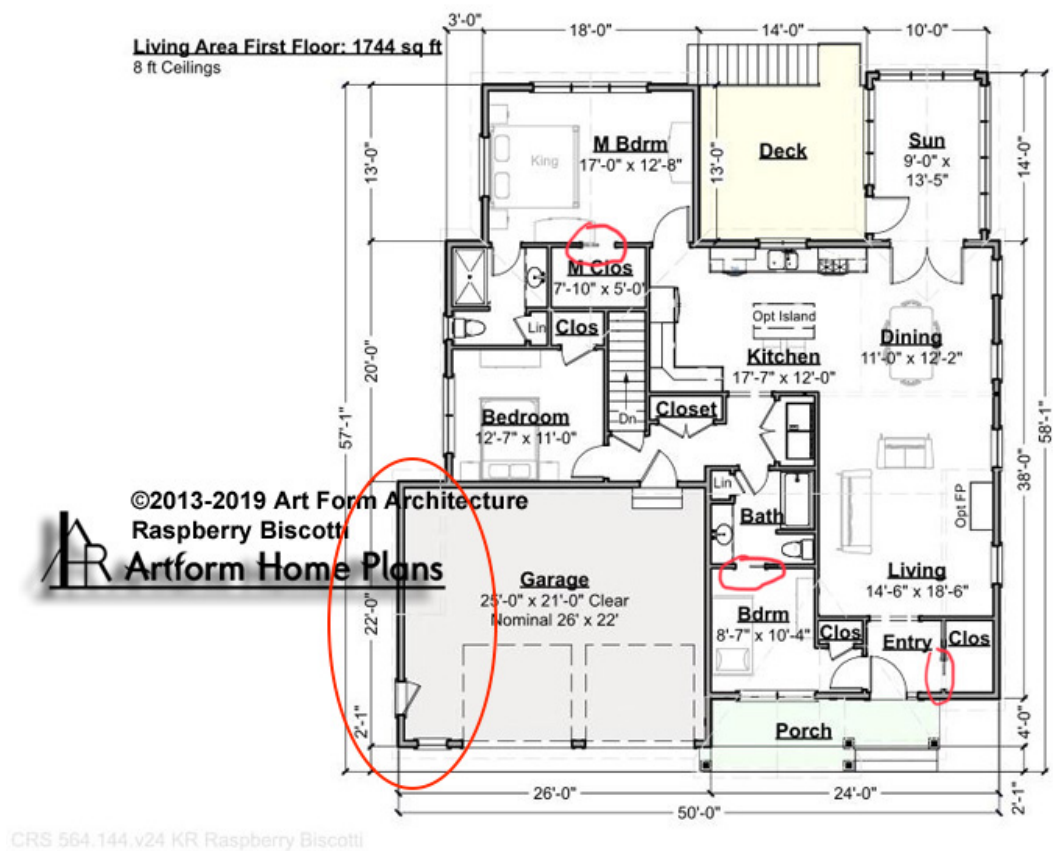


Fig. 5  
*Pocket doors and larger garage (plan 564.144.v24 KR)*



9/3/2019  
**Raspberry Biscotti**  
564.144.v32 KR (9/3/2019)

© 2013-2019 Art Form Architecture, Inc., all rights reserved.  
You may not build this design without purchasing a license,  
even if you make changes. This design may have geographic  
restrictions.

**Artform Home Plans**  
603-431-9559

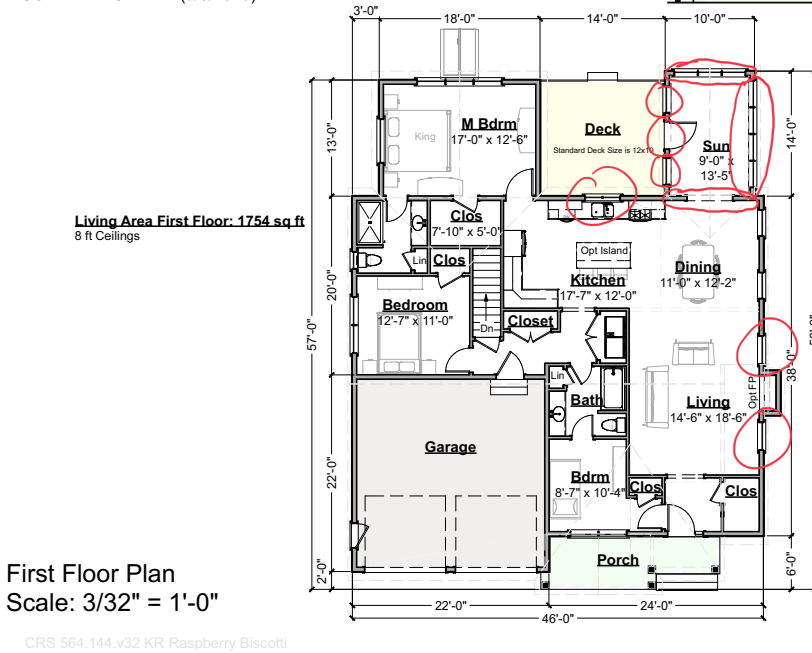
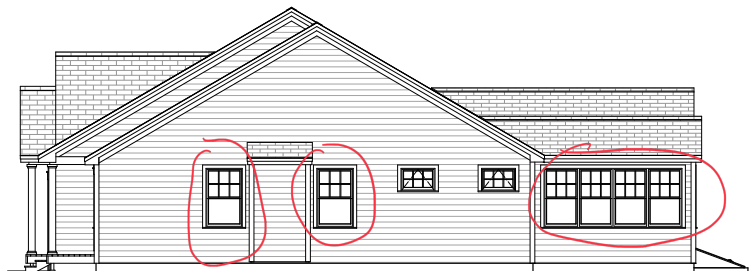


Fig. 6  
*Windows to be changed*

9/3/2019  
**Raspberry Biscotti**  
564.144.v32 KR (9/3/2019)

© 2013-2019 Art Form Architecture, Inc., all rights reserved.  
You may not build this design without purchasing a license,  
even if you make changes. This design may have geographic  
restrictions.

**Artform Home Plans**  
603-431-9559



Right Elevation  
Scale: 1/8" = 1'-0"

CRS 564.144.v32 KR Raspberry Biscotti

Fig. 7  
*Sideview of windows to be changed*

9/3/2019  
**Raspberry Biscotti**  
564.144.v32 KR (9/3/2019)

© 2013-2019 Art Form Architecture, Inc., all rights reserved.  
You may not build this design without purchasing a license,  
even if you make changes. This design may have geographic  
restrictions.

**Artform Home Plans**  
603-431-9559



Rear Elevation  
Scale: 1/8" = 1'-0"

CRS 564.144.v32 KR Raspberry Biscotti

Fig. 8  
*Rear view of windows to be changed*

no text on  
this page

  
03/04/21  
8:34 PM EST  
dotloop verified

  
03/05/21  
7:37 AM EST  
dotloop verified