

320.125 Emerald Sea, Classic w/Sun

Some features shown are optional. Your contract with your builder governs.

First Floor

Living Area: 1112 SF

Beds: 0

Baths: 0.5

Ceiling Height Shown: 8'-0"

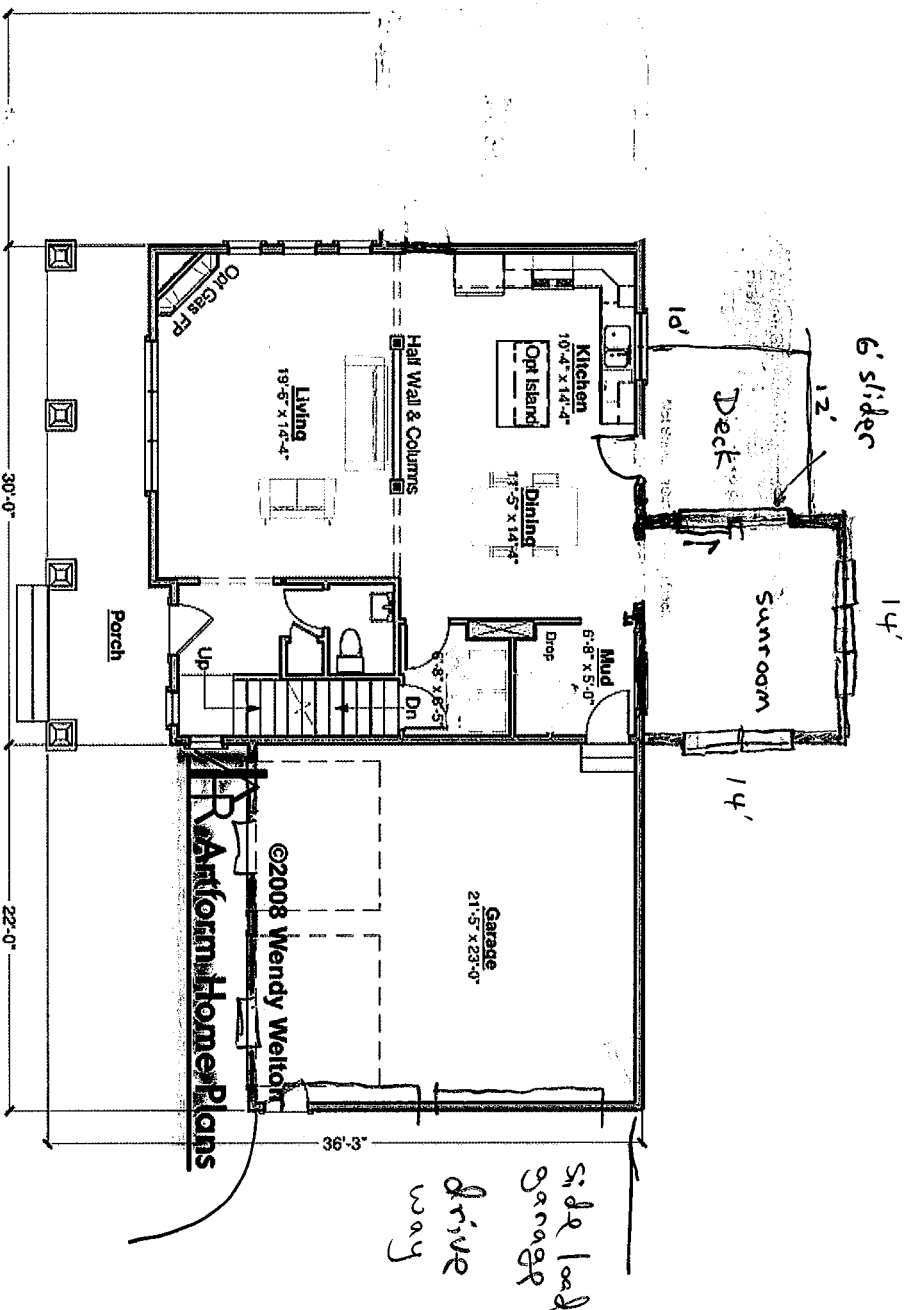
Ceiling Height Possible*: 9'-0"

* -- See Major Changes on pricing tab of plan page for cost.

This first floor applies to all the Artform Signature Bungalows, Prime Expanded configuration, Symmetrical (like the Robin, Sea Apple, etc.) In the Asymmetrical designs, the only change is at the porch columns.

See predesigned changes for pantry, 9 ft ceiling and other options.

320.125 Emerald Sea 320



Artform Home Plans

320.125 Emerald Sea, Classic w/Sun

Some features shown are optional. Your contract with your builder governs.

Second Floor

Living Area: 1301 SF

Beds: 4

Baths: 2.0

Ceiling Height Shown: 8'-0"

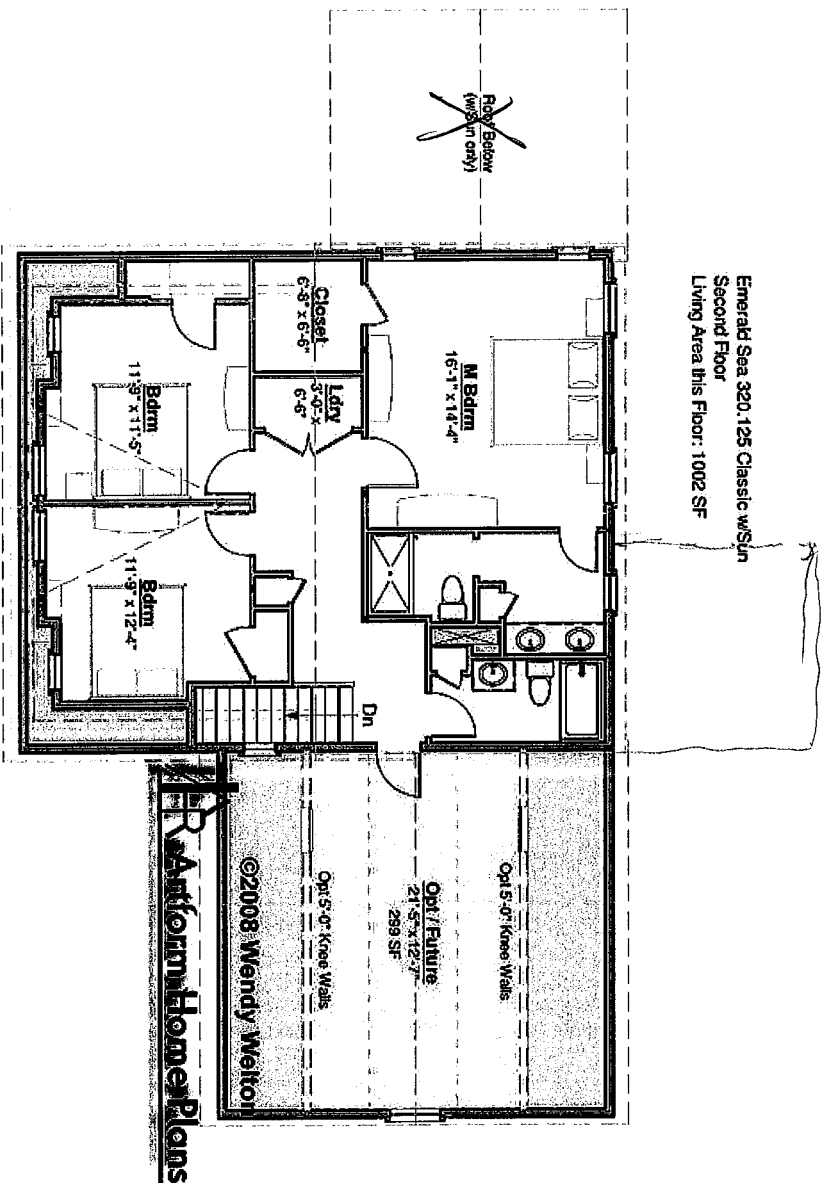
Ceiling Height Possible*: 8'-0"

*-- See Major Changes on pricing tab of plan page for cost.

Second floor plans for other symmetrical Artform Signature Bungalows will be similar - like the Robin

See predesigned changes for master bath with separate tub and shower, and other options.

.125 Emerald Sea 320



 Artform Home Plans

320.125 Emerald Sea, Classic w/Sun

Some features shown are optional. Your contract with your builder governs.

Basement Floor

Living Area: 0 SF

Beds: 0

Baths: 0.0

Ceiling Height Shown: 7'-8"

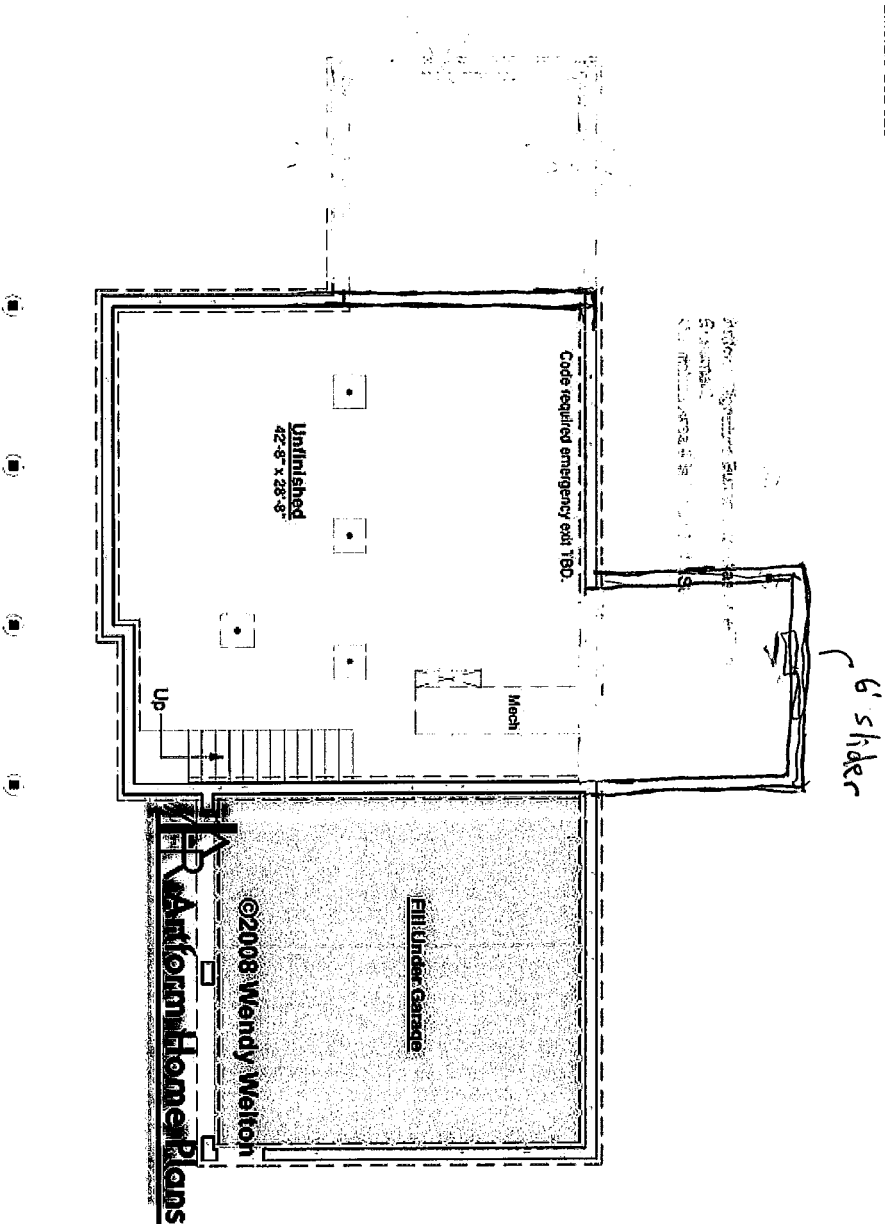
Ceiling Height Possible*: 9'-0"

* -- See Major Changes on pricing tab of plan page for cost.

This is the basement plan for all AFHP Signature Bungalows for the Classic with Sun Configuration. If you plan on using the Unfinished space as additional living area, do remember to leave space for your mechanical equipment and electrical panel. We don't list the potential living area as "future" in designs that are not drive-under garages because it skews searches and because a drive-under is more likely to be a daylight basement.

Building codes require the same kind of egress (emergency escape) as for a bedroom. It can a bulkhead or a bedroom "egress" size window with a properly sized window well. And of course, a walk-out door qualifies.

.125 Emerald Sea 320



Artform Home Plans

320.125 Emerald Sea, Classic w/Sun

Some features shown are optional. Your contract with your builder governs.

Elevations

