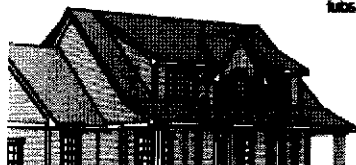
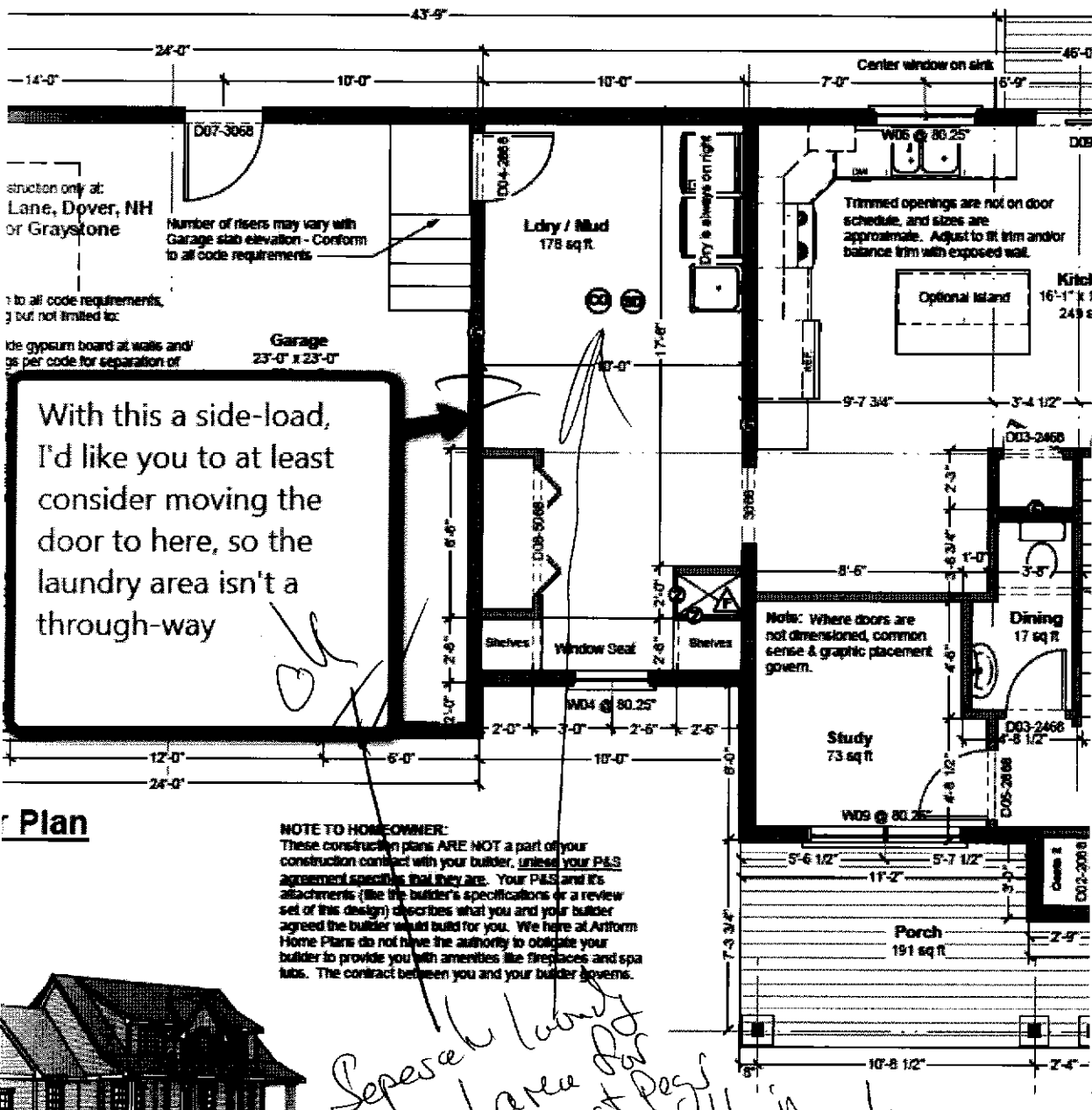


dave

From: Wendy Welton [Wendy@artform.us]
Sent: Monday, April 30, 2012 3:08 PM
To: 'dave'
Cc: holly@artform.us
Subject: RE: Change @ 1st Floor - Saffron Compote

Plans are coming to you in a few minutes, as sketched.

I would like to throw out one last idea. I feel like that connector is not used to its full. If we keep it as sketched, but move the door to the middle – more direct path to kitchen with groceries, and the laundry area can have a folding counter, be a fabulous space. And I'd add a window in the back.



From: dave [mailto:davegraystn@metrocast.net]
Sent: Monday, April 30, 2012 2:32 PM
To: 'Holly Spinney'
Subject: RE: Change @ 1st Floor - Saffron Compote

4/30/2012