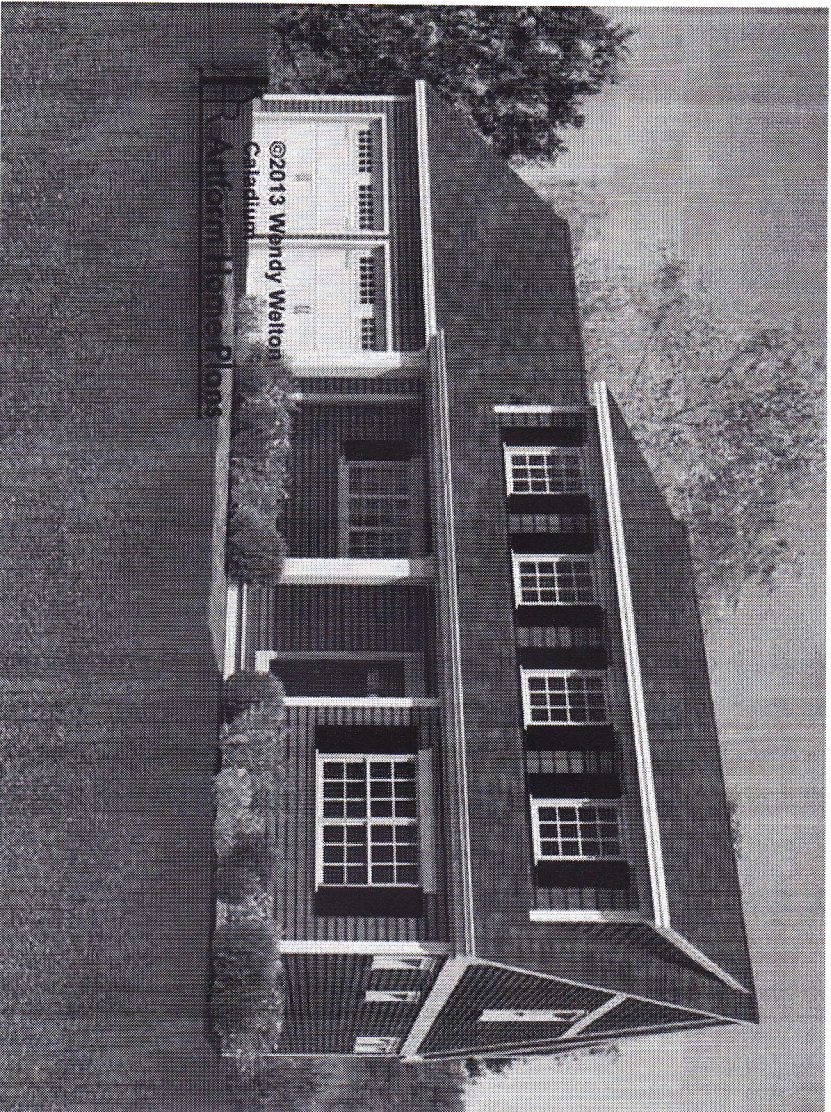


Caladium, Classic Expanded

536.124a

© 2013 Art Form Architecture, Inc. All Rights Reserved . <http://www.artformhomeplans.com>



See more plans in the April in the Village Collection.

	Living Area	Bedrooms	Bathrooms	Ceiling Height Shown	Ceiling Height Possible*
First Floor	900 SF	0	0.0	8'-0"	9'-0"
Second Floor	1215 SF	4	2.0	8'-0"	8'-0"
Total Above Grade	2115 SF	4	2.0		
Basement	0 SF	0	0.0		

* -- Increasing ceiling height requires a Major Change.

<http://www.artformhomeplans.com/Contact.a5w>

Artform Home Plans

The Caladium is a April in the Village cousin to the Calla Bungalow. The April in the Village collection was adapted for narrower lots. The outdoor space is tucked in the crook of the house for privacy. This configuration has the "A" expansion - taking full advantage of the space over the garage.

1320.02

<http://www.artformhomeplans.com/TermsConditions.a5w>

Caladium, Classic Expanded

536.124a

© 2013 Art Form Architecture, Inc. All Rights Reserved . <http://www.artformhomeplans.com>

First Floor

Living Area: 900 SF

Bedrooms: 0

Bathrooms: 0.0

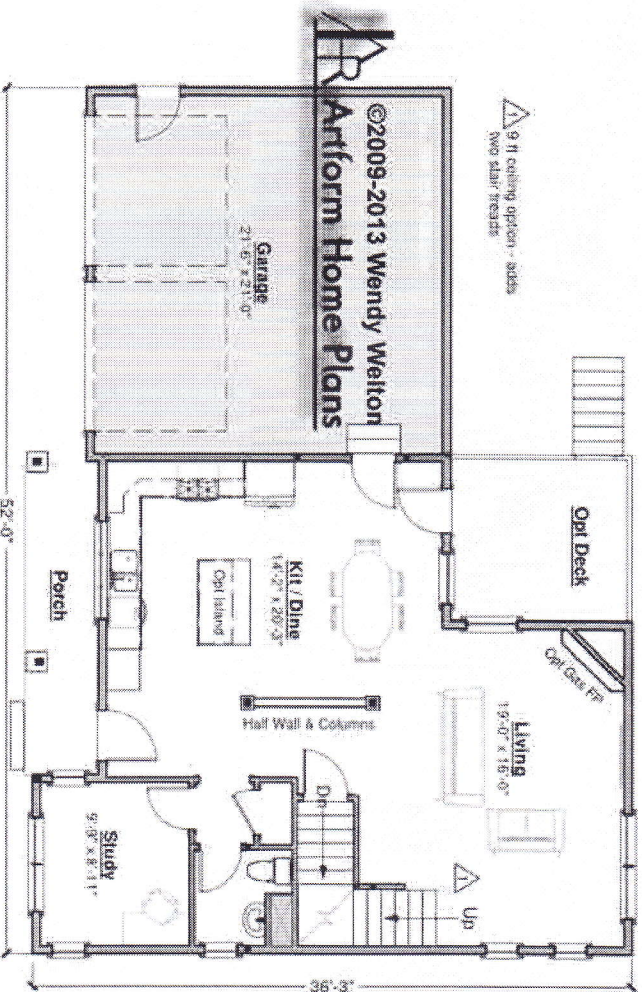
Ceiling Height Shown: 8'-0"

Ceiling Height Possible*: 9'-0"

* -- Increasing ceiling height requires a Major Change.

This first floor applies to all the April in the Village cottages and bungalows, Classic configuration (attached garage, no other wings). There will be some variation in front windows from one Look to another.

April in the Village
Classic Configuration, including Gold & Expanded
Living Area this Floor: 900 SF



 Artform Home Plans

Caladium, Classic Expanded

536.124a

© 2013 Art Form Architecture, Inc. All Rights Reserved . <http://www.artformhomeplans.com>

Second Floor

Living Area: 1215 SF

Bedrooms: 4

Bathrooms: 2.0

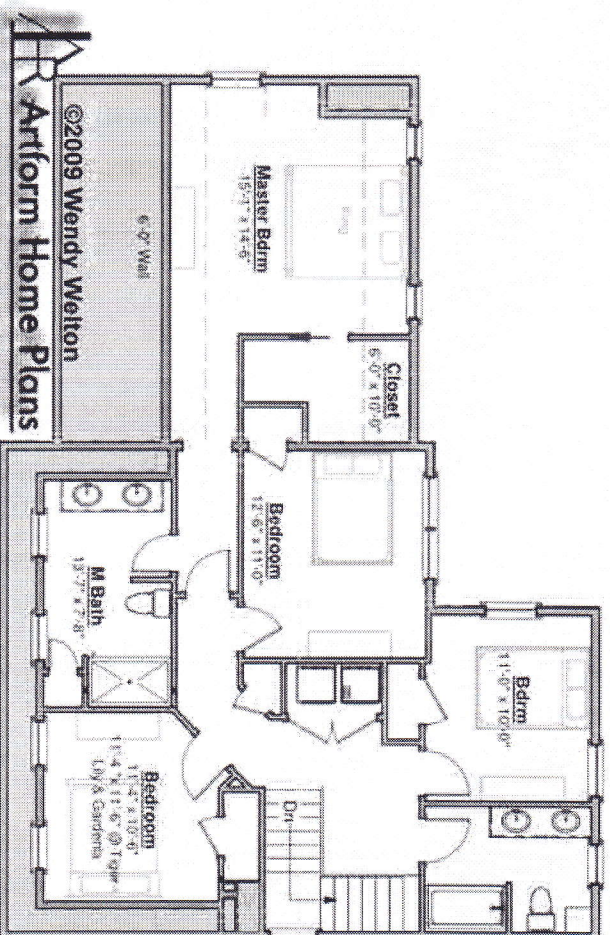
Ceiling Height Shown: 8'-0"

Ceiling Height Possible*: 8'-0"

* -- Increasing ceiling height requires a Major Change.

This second floor is the Caladium "Look" of the April in the Village collection. Classic Expanded "A" configuration (attached garage, no other wings, shed dormer extended along the back of the garage). The other front looks will vary only at the front bedroom - minor dimension difference and associated minor square footage difference for this floor.

Caladium
Classic Expanded Configuration
Living Area this Floor: 1215 SF



Caladium, Classic Expanded 536.124a

© 2013 Art Form Architecture, Inc. All Rights Reserved . <http://www.artformhomeplans.com>

Basement Floor

Living Area: 0 SF

Bedrooms: 0

Bathrooms: 0.0

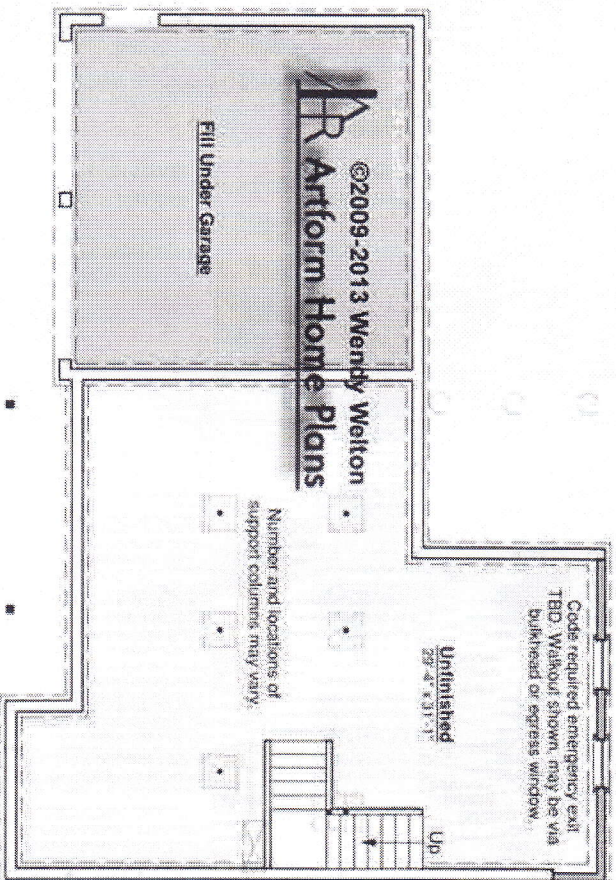
Ceiling Height Shown: 7'-8"

Ceiling Height Possible*: 9'-0"

* -- Increasing ceiling height requires a Major Change.

This basement applies to all the April in the Village cottages and bungalows, Classic configuration (attached garage, no other wings).

April in the Village
Classic Configuration, including Gold & Expanded



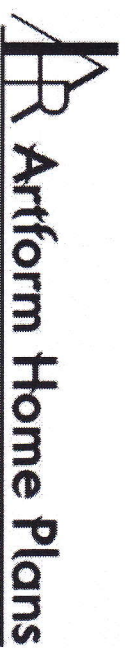
Artform Home Plans

Caladium, Classic Expanded

536.124a

© 2013 Art Form Architecture, Inc. All Rights Reserved . <http://www.artformhomeplans.com>

Heights



Caladium Classic Expanded

AFHP Default Grade *1 is 1'-9" below first floor subfloor for consistency in how we list height on the web site. The distance to grade is often more. Talk to your builder.

*3 Height for zoning may be measured from the grade at the front, the lowest grade or an average. Talk to your builder and/or governing officials.

