

398.002 Gilligan

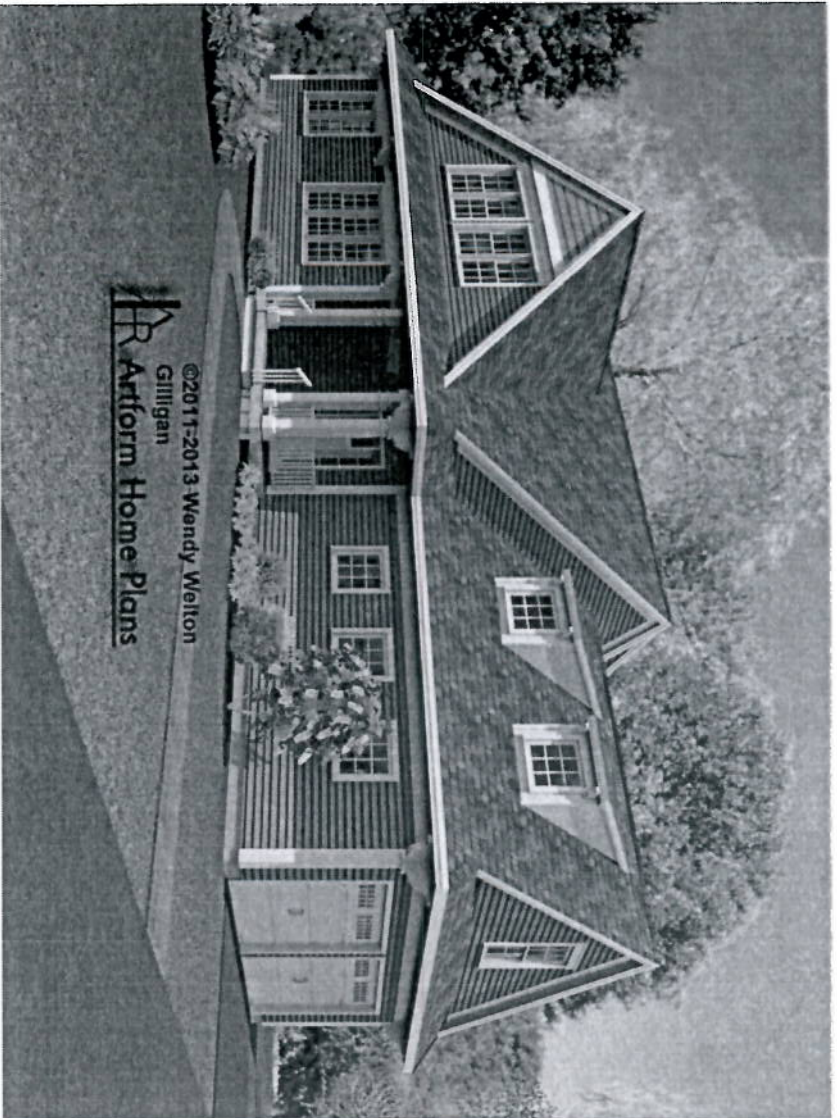
3380 SF

2/27

Some features shown are optional. Your contract with your builder governs.

Artform Home Plans

Lot A Space Hill Road
Burlington, MA
01803



Gilligan is an adaptation of the original Skipper. Where Skipper features a second front porch for views, Gilligan was designed for views to the rear - so we moved the porch to the rear but tucked it to the side so the Living Room views are unobstructed. Gilligan was also designed specifically to be seen from the rear, with a repeat of the boathouse style cross gable

What happened to the alternate floor plans? Well, they were never supposed to show here. The alternate has a gable back, which is more expensive to build, but provides less living area. So we're going with this version as "the" version.

	Living Area	Bedrooms	Bathrooms	Ceiling Height Shown	Ceiling Height Possible*
First Floor	1184 SF	0	0.5	9'-0"	9'-0"
Second Floor	1764 SF	4	2.0	8'-0"	8'-0"
Total Above Grade	2948 SF	4	2.5		
Basement	0 SF	0	0.0	7'-8"	9'-0"

* -- See Major Changes on pricing tab of plan page for cost.

<http://www.artformhomeplans.com/contact.php>
<http://www.artformhomeplans.com/licenses/conditions.php>

Design is copyright protected, all rights reserved. You may not build without purchasing a license, even if you make changes. Square footages and room dimensions are approximate, and may vary slightly. Not responsible for typographical errors.

2 - What if Ber?

398.002 Gilligan

Some features shown are optional. Your contract with your builder governs.

Elevations

2/22

 Artform Home Plans



398.002 Gilligan

Some features shown are optional. Your contract with your builder governs.

Basement Floor

Living Area: 0 SF

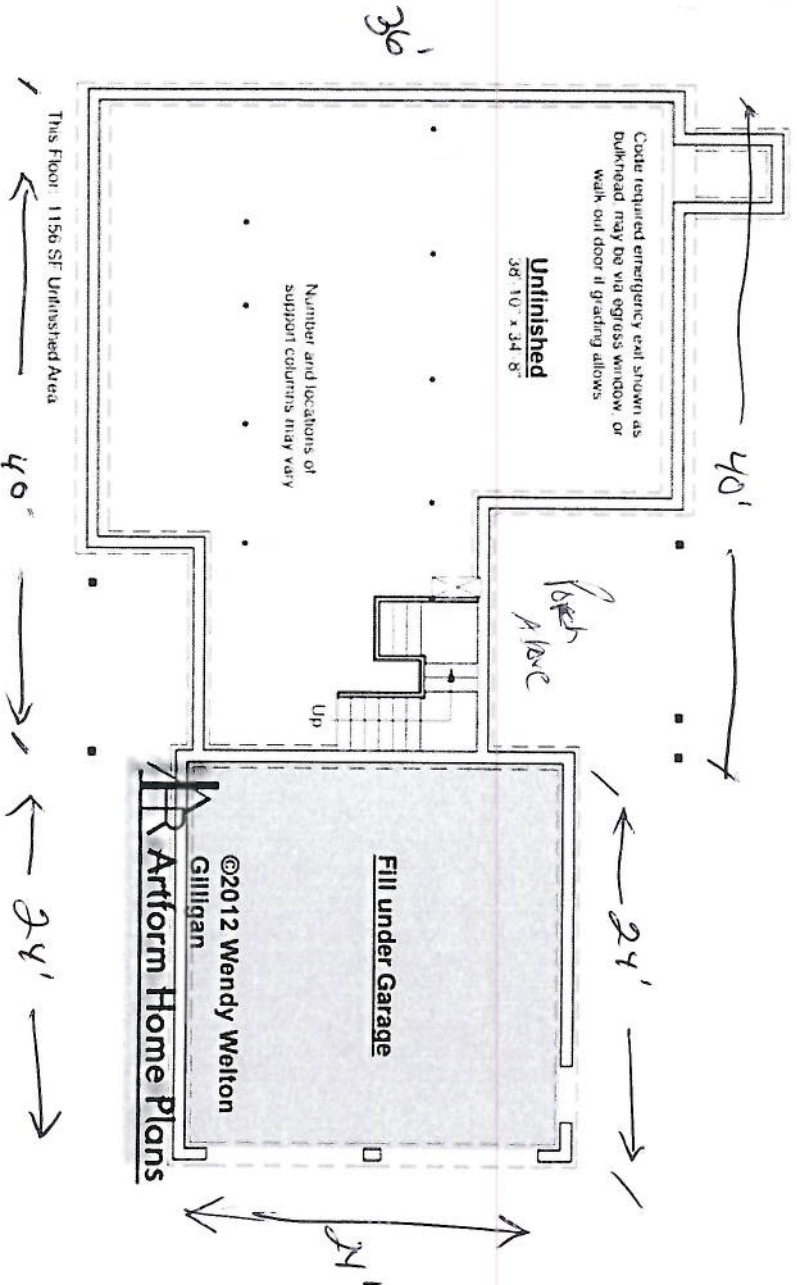
Beds: 0

Baths: 0.0

Ceiling Height Shown: 7'-8"

Ceiling Height Possible*: 9'-0"

*--See Major Changes on pricing tab of plan page for cost.



398.002 Gilligan

Some features shown are optional. Your contract with your builder governs.

Second Floor

Living Area: 1764 SF

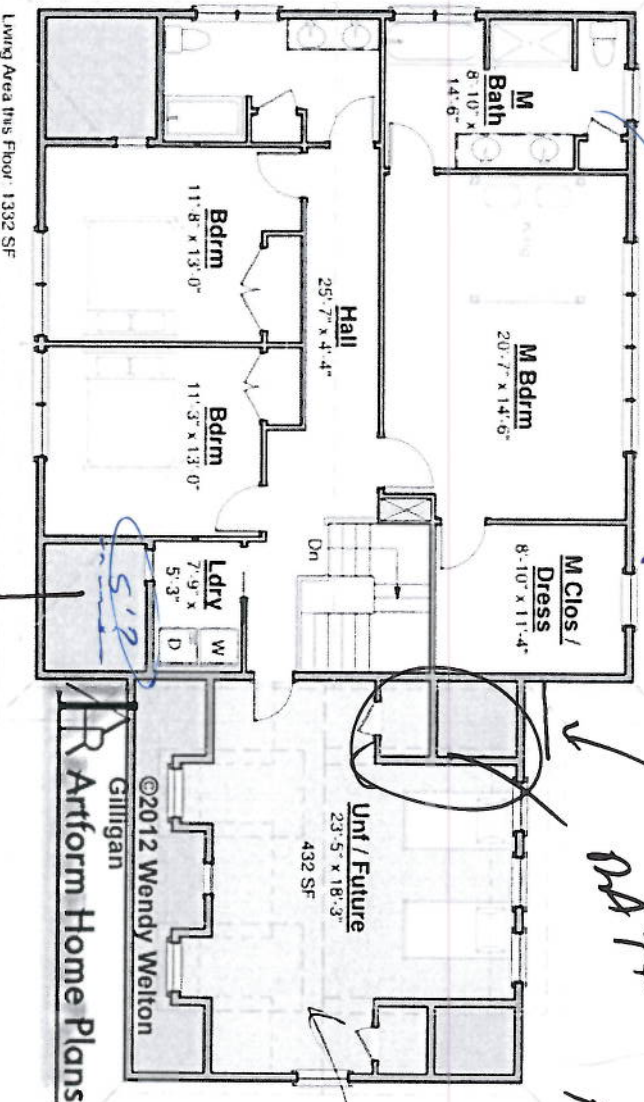
Beds: 4

Baths: 2.0

Ceiling Height Shown: 8'-0"

Ceiling Height Possible*: 8'-0"

* -- See Major Changes on pricing tab of plan page for cost.



2/27

Artform Home Plans

EXTEND DOWN

MA 1P

Back over change

YES 4.6" KNEE 60-10

398.002 Gilligan

Some features shown are optional. Your contract with your builder governs.

First Floor

Living Area: 1184 SF

Beds: 0

Baths: 0.5

Ceiling Height Shown: 9'-0"

Ceiling Height Possible*: 9'-0"

* -- See Major Changes on pricing tab of plan page for cost.

