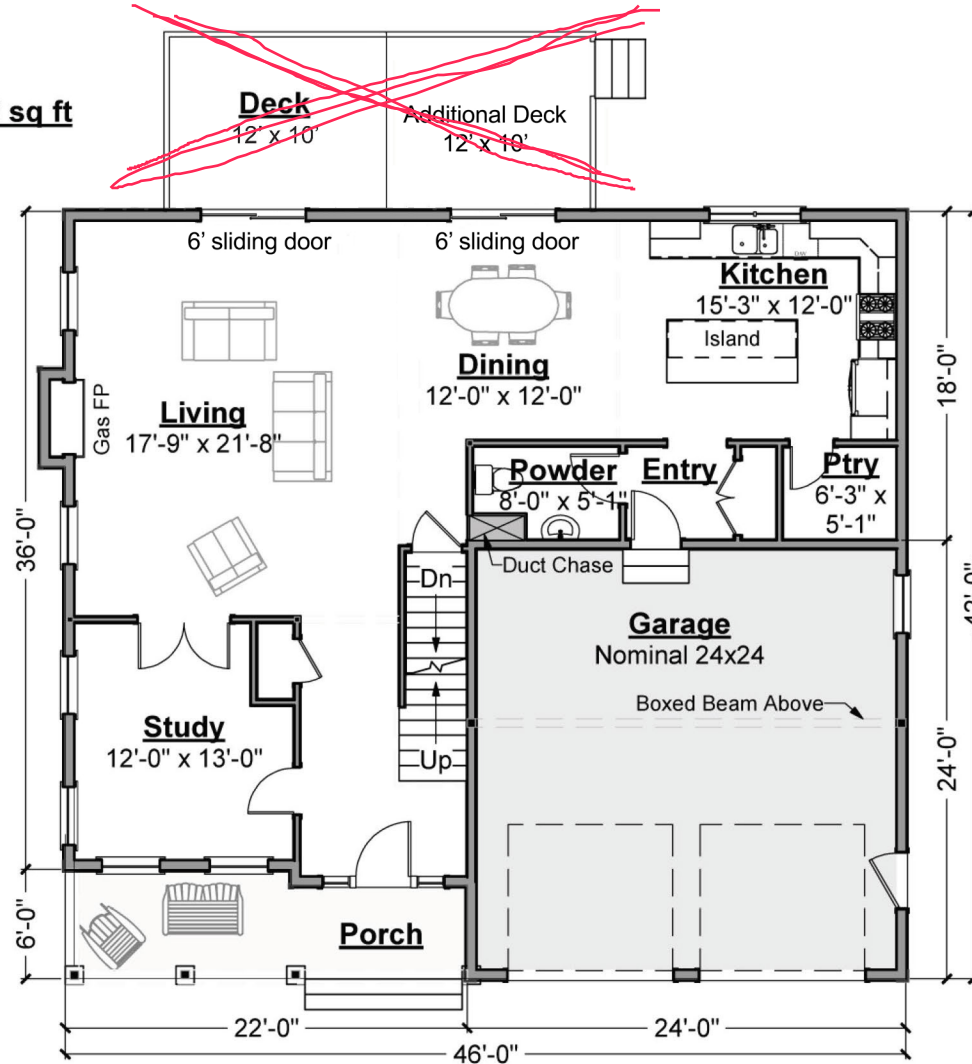


This plan is for marketing purposes only. Areas, locations and dimensions are approximate and subject to change during construction.

See 2nd page for deck size

Living Area this Floor: 1209 sq ft
9 ft Ceiling Height

Approximate Areas:
1st Floor 1,209 s.f.
2nd Floor 1,648 s.f.
Total 2,857 s.f.



First Floor

Farm Village - Sawyer

Ipswich

LOT 3 revisions - 6/18/2020



S Y M E S®

50 DODGE STREET · BEVERLY, MASSACHUSETTS 01915 · P: 978-922-5300 · F: 978-922-5444 · www.symesassociates.com

