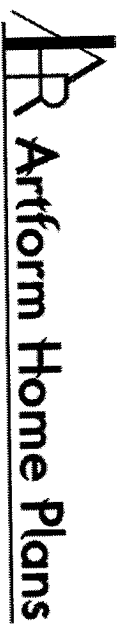
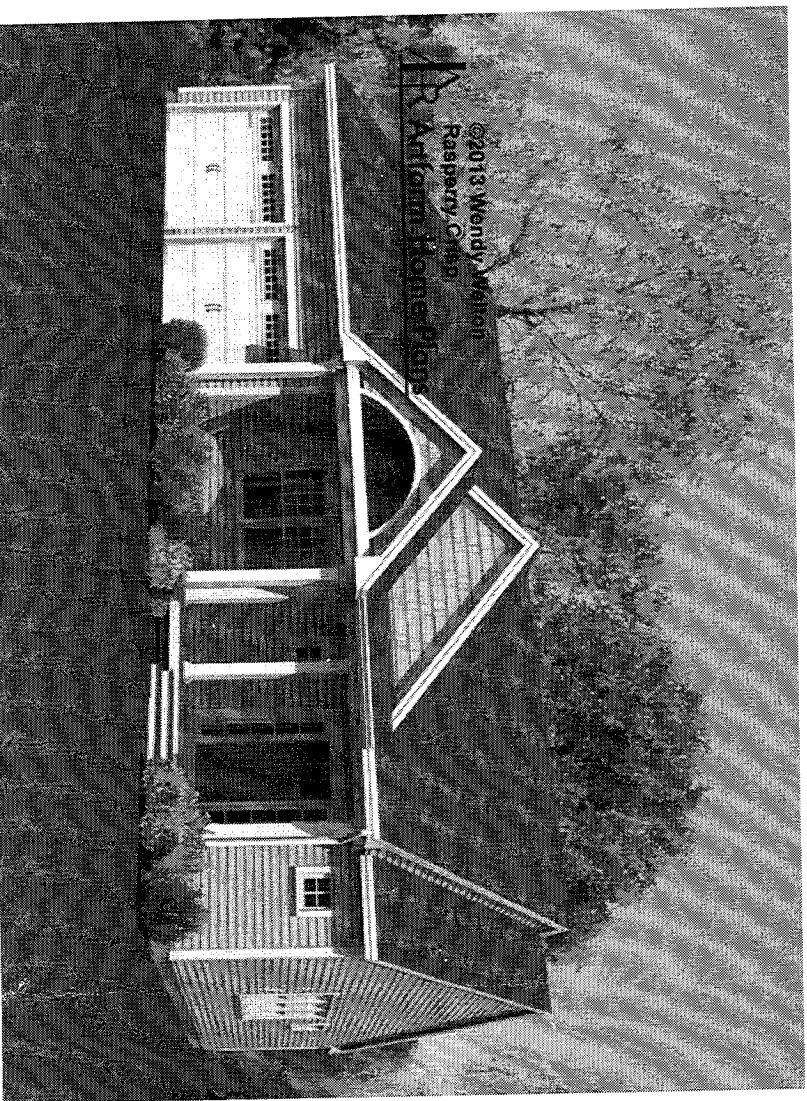


# 565.140 KR Raspberry Crisp

Some features shown are optional. Your contract with your builder governs.



Raspberry Crisp was designed with flexibility in mind. The front bedroom would work just as well as a home office, and with an on-suite bath, great for guests. The layout and rooflines make expansion easy. Why "Crisp"? Well, we're thinking bake sale - and a serving of Crisp is always larger than a Biscotti!

Coming soon - front look variations, like a Blueberry, Gooseberry, Strawberry and Boysenberry.

For a narrow lot variation of this same layout, see the Biscotti.

9' Ceilings  
NO Front Arch  
Add Transom Window Front Door  
with obscure glass in transom

See more plans in the Bakery Series Collection.

	Living Area	Bedrooms	Bathrooms	Ceiling Height Shown	Ceiling Height Possible*
First Floor	1802 SF	3	2.5	8'-0"	9'-0"
Total Above Grade	1802 SF	3	2.5		
Basement	0 SF	0	0.0	7'-8"	9'-0"

\* -- See Major Changes on pricing tab of plan page for cost.

<http://www.artformhomeplans.com/contact.asp>

<http://www.artformhomeplans.com/TermsConditions.asp>

Design is copyright protected, all rights reserved. You may not build without purchasing a license, even if you make changes. Square footages and room dimensions are approximate, and may vary slightly. Not responsible for typographical errors.

# 565.140 KR Raspberry Crisp

Some features shown are optional. Your contract with your builder governs.

## First Floor

Living Area: 1802 SF

Beds: 3

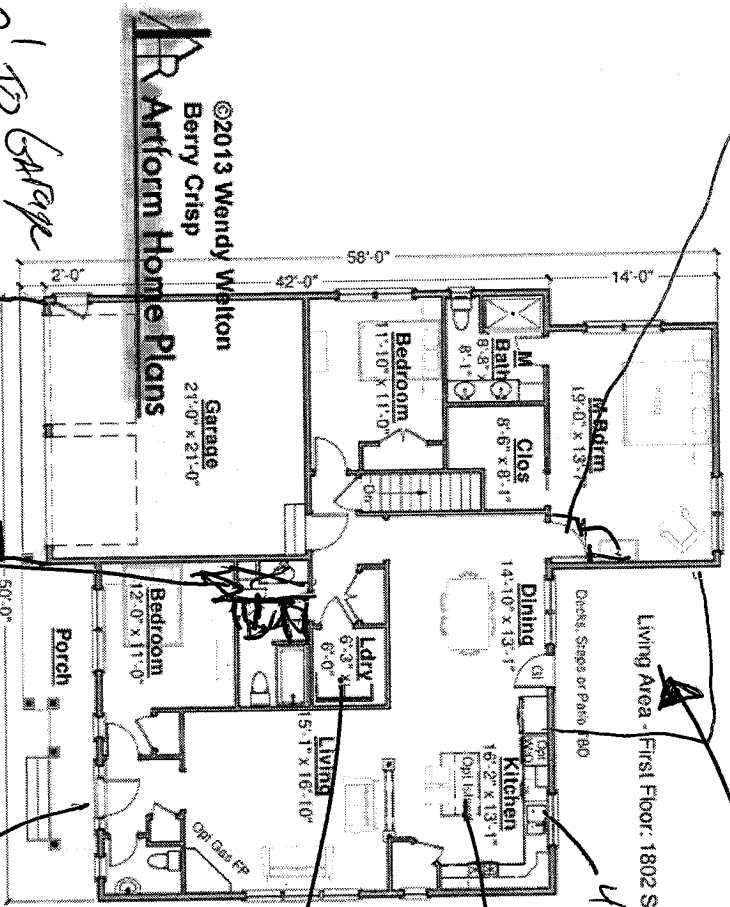
Baths: 2.5

Ceiling Height Shown: 8'-0"

Ceiling Height Possible\*: 9'-0"

\* -- See Major Changes on pricing tab of plan page for cost.

This floor can expand easily to the side, either full depth or only partial. For instance, we could increase the width at the Living Room only. The master wing in the rear can be increased to 22' wide without infringing on Dining windows, and can increase to the rear as much as the lot allows.



Access for Por

12x14 Screen Porch

yes 6' Island

Canopy to be 5' x 10' with Linen closet to left.

Transom over bed

Update hallway

Add 2' to Garage

Design is copyright protected, all rights reserved. You may not build without purchasing a license, even if you make changes. Square footages and room dimensions are approximate, and may vary slightly. Not responsible for typographical errors.

<http://www.artformhomeplans.com/Contact.aspx>  
<http://www.artformhomeplans.com/TermsConditions.aspx>

Artform Home Plans

# 565.140 KR Raspberry Crisp

Some features shown are optional. Your contract with your builder governs.

## Basement Floor

Living Area: 0 SF

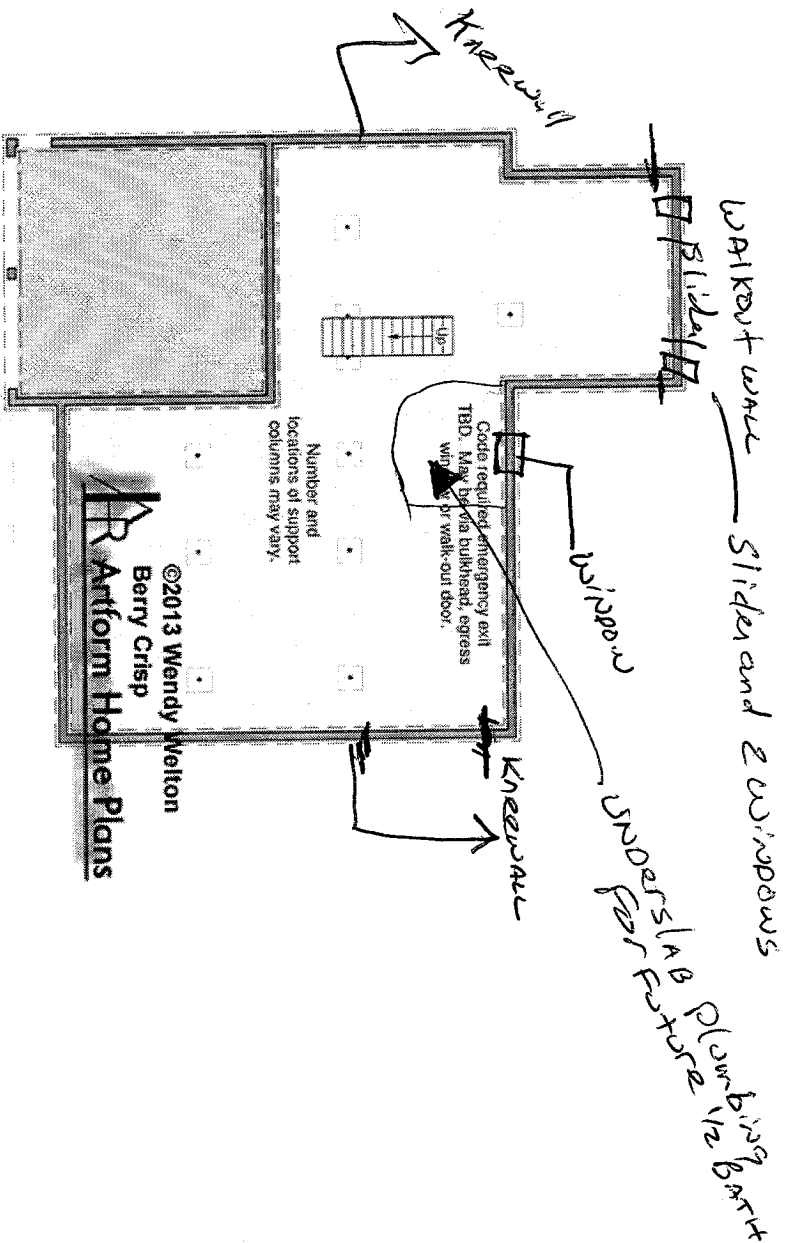
Beds: 0

Baths: 0.0

Ceiling Height Shown: 7'-8"

Ceiling Height Possible\*: 9'-0"

\* -- See Major Changes on pricing tab of plan page for cost.



**Artform Home Plans**

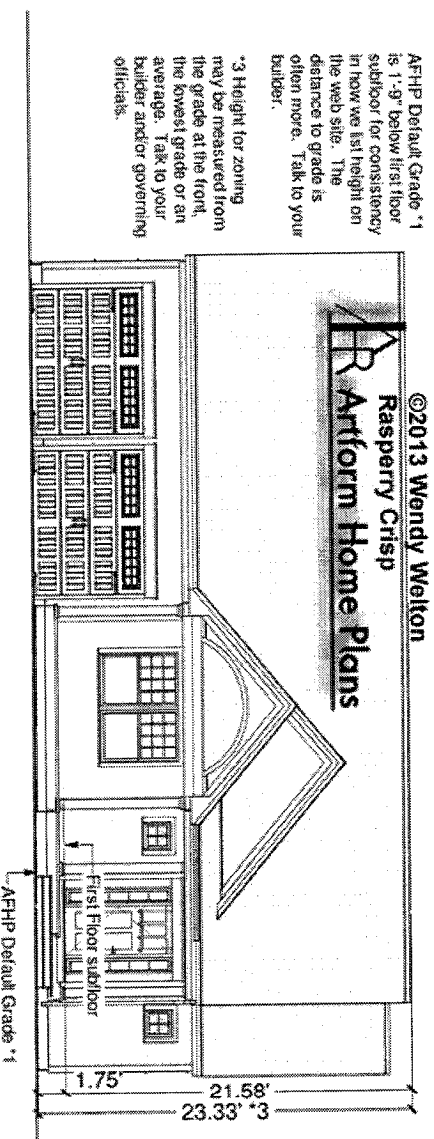
Design is copyright protected, all rights reserved. You may not build without purchasing a license, even if you make changes. Square footages and room dimensions are approximate, and may vary slightly. Not responsible for typographical errors.

<http://www.artformhomeplans.com/Contact.aspx>  
<http://www.artformhomeplans.com/TermsConditions.aspx>

# 565.140 KR Raspberry Crisp

Some features shown are optional. Your contract with your builder governs.

## Heights



<http://www.artformhomeplans.com/Contact.a5w>  
<http://www.artformhomeplans.com/TermsConditions.a5w>

Design is copy/right protected, all rights reserved. You may not build without purchasing a license, even if you make changes. Square footages and room dimensions are approximate, and may vary slightly. Not responsible for typographical errors.