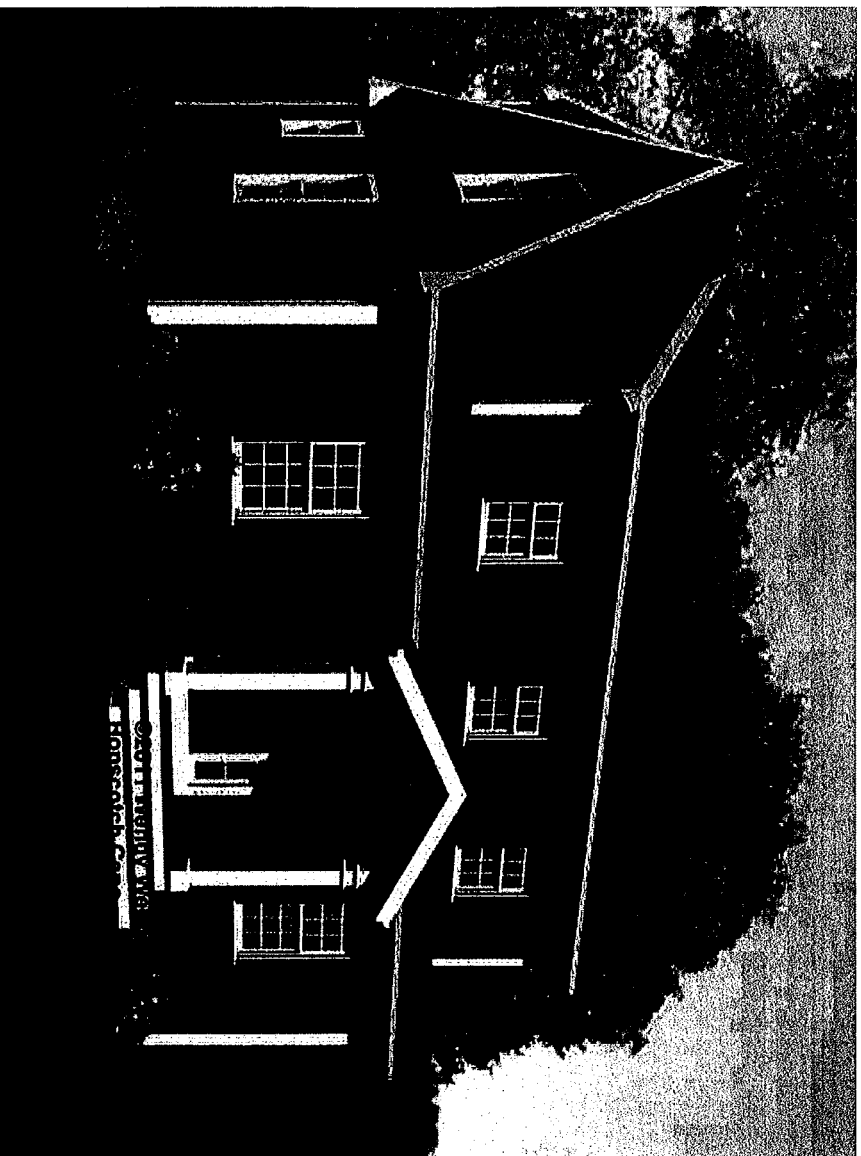


# Hopscotch w/Portico

408.003

© 2013 Art Form Architecture, Inc. All Rights Reserved . <http://www.artformhomeplans.com>



Here's our new favorite, the Hopscotch Cottage, with a portico style entry porch. It adds an elegant touch, protects the door (and your head) while not shading the windows - still bringing in lots of day/light.

**Artform Home Plans**

See more plans in the Scott-Scotch Capes & Colonials Collection.

	Living Area	Bedrooms	Bathrooms	Ceiling Height Shown	Ceiling Height Possible*
First Floor	884 SF	1	1.0	8'-0"	8'-0"
Second Floor	844 SF	3	2.0	8'-0"	8'-0"
Total Above Grade	1728 SF	4	3.0		
Basement	0 SF	0	0.0		

KC  
BL  
JL

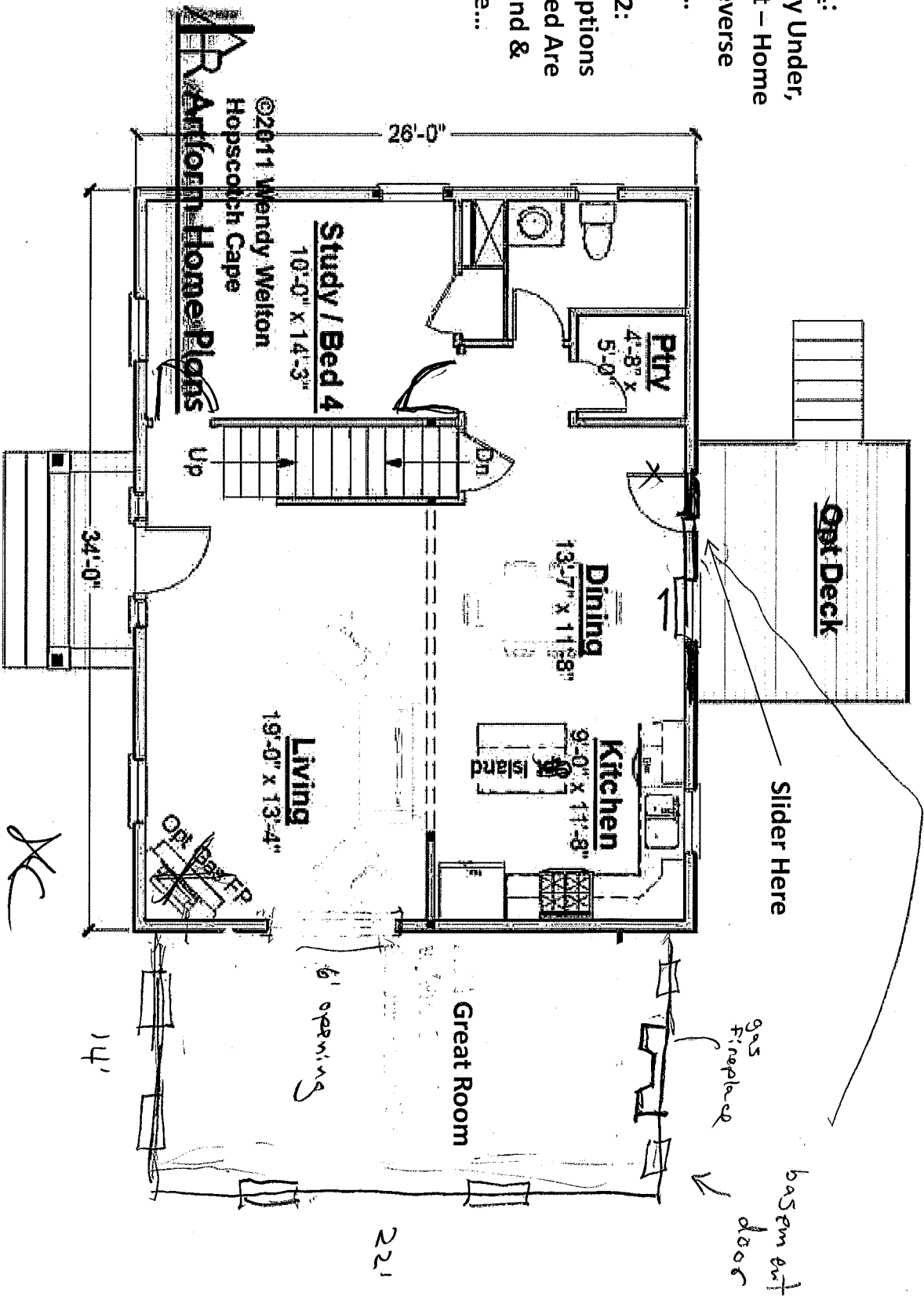
\* -- Increasing ceiling height requires a Major Change.

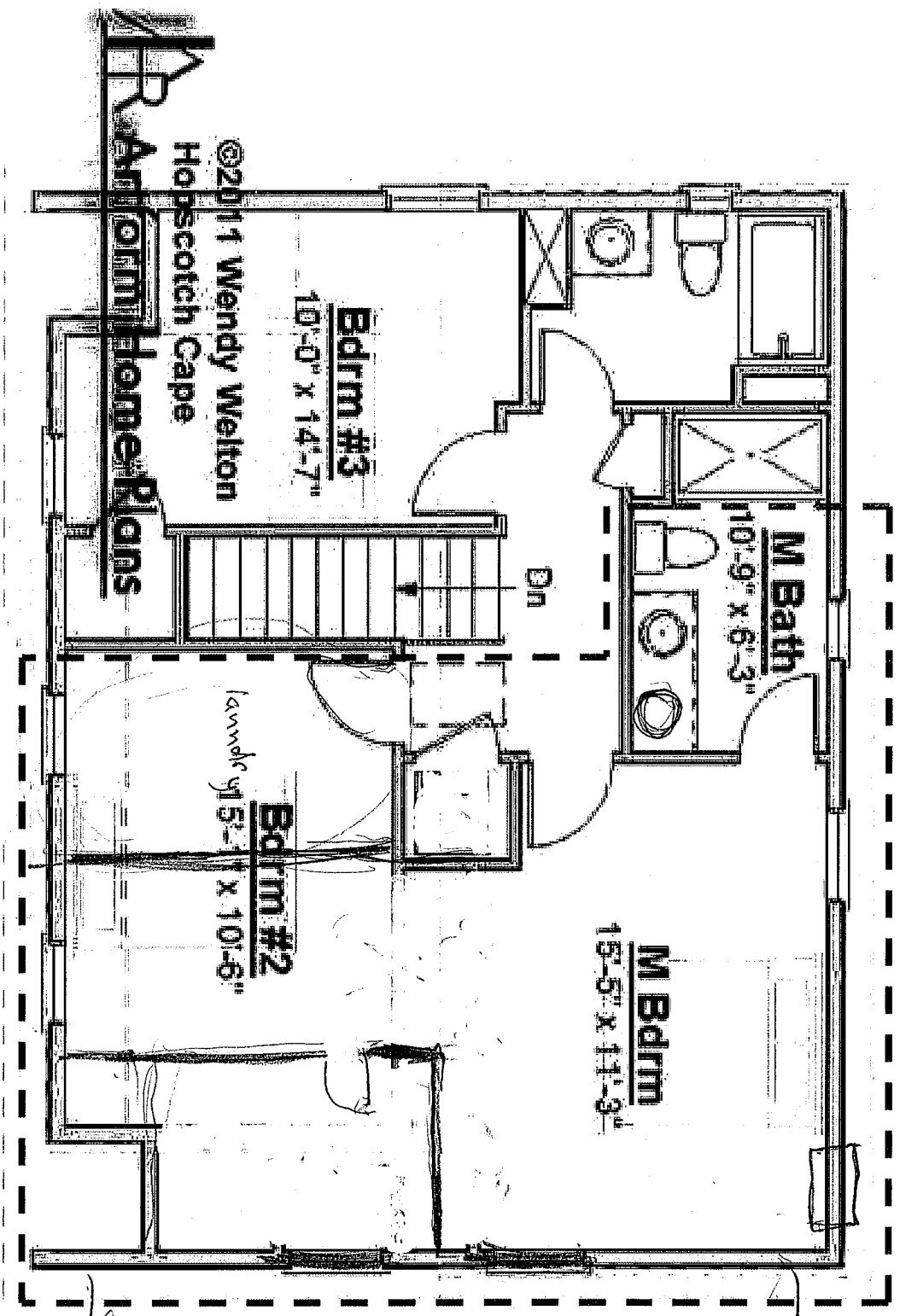
<http://www.artformhomeplans.com/Contact.a5w>

<http://www.artformhomeplans.com/TermsConditions.a5w>

**NOTE - 1:**  
 Driveway Under,  
 On Right - Home  
 To Be Reverse  
 Imaged...

**NOTE: - 2:**  
 Major Options  
 Requested Are  
 A/C, Island &  
 Fireplace...





©2011 Wendy Welton  
Hopscotch Cape  
**Antiform Home Plans**

**Bdrm #3**  
10'-0" x 14'-7"

**M Bath**  
10'-9" x 6'-3"

**M Bdrm**  
15'-5" x 11'-3"

**Bdrm #2**  
15'-1" x 10'-6"

Modify This A  
Result In 1 La  
Master w/Ba  
Walk In Close  
As Laundry U

KL  
BL  
PL