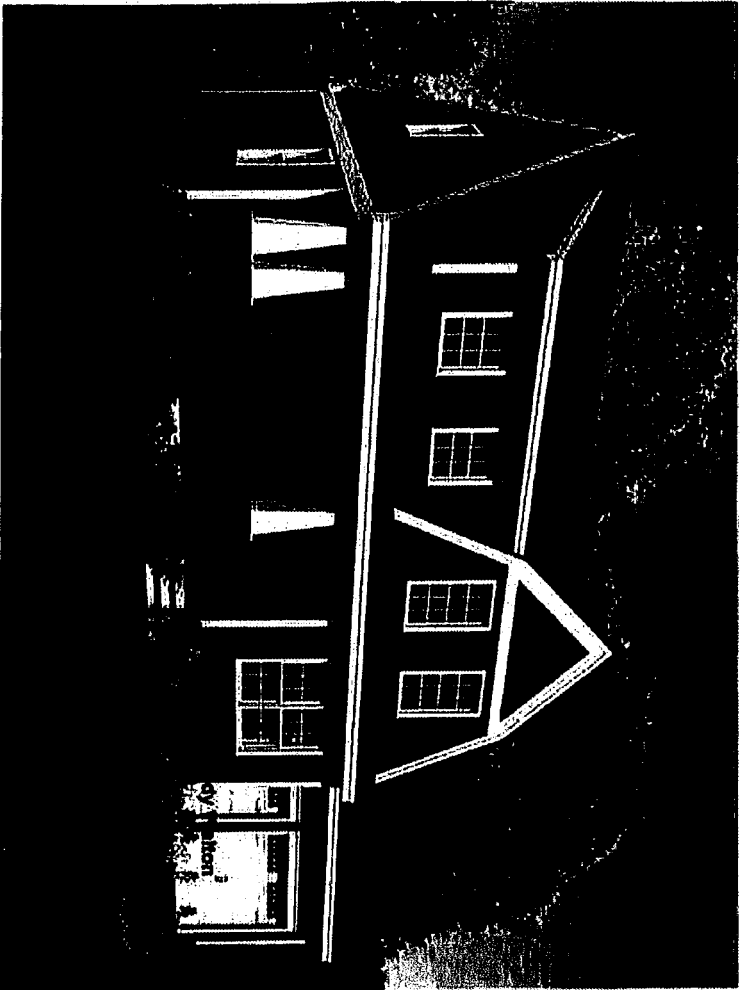


April Gladiola, Grande

527.128

© 2013 Art Form Architecture, Inc. All Rights Reserved . <http://www.artformhomeplans.com>

Front to be
April Calling



We've developed this variation of the Gladiola to provide a good Aging in Place option. The "Grande" configuration has no rear shed dormer, so you're not paying for volume you don't need. The upstairs guest and bonus rooms are a good size, plenty of room for your grown children and the grand kids.

Artform Home Plans

See more plans in the April in the Country Collection.

	Living Area	Bedrooms	Bathrooms	Ceiling Height Shown	Ceiling Height Possible*
First Floor	1398 SF	2	2.0	8'-0"	9'-0"
Second Floor	1011 SF	3	2.0	8'-0"	8'-0"
Total Above Grade	2409 SF	5	4.0		
Basement	0 SF	0	0.0		

* - Increasing ceiling height requires a Major Change.

<http://www.artformhomeplans.com/Contact.aspx>

<http://www.artformhomeplans.com/TermsConditions.aspx>

Handwritten initials and signature: JCP, Exp, and a large flourish.

April Gladiola, Grande

527.128

© 2013 Art Form Architecture, Inc. All Rights Reserved. <http://www.artformhomeplans.com>

First Floor

Living Area: 1398 SF

Bedrooms: 2

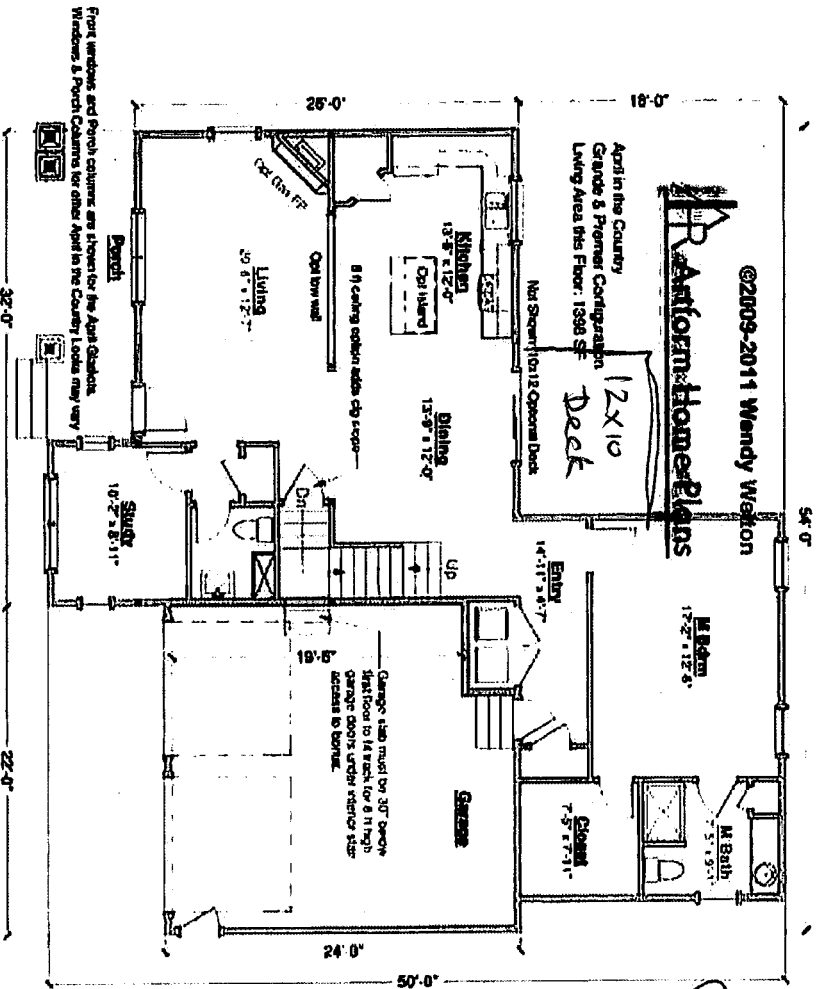
Bathrooms: 2.0

Ceiling Height Shown: 8'-0"

Ceiling Height Possible*: 9'-0"

* - Increasing ceiling height requires a Major Change.

This first floor applies to all the April in the Country cottages and bungalows, Grande configuration (attached garage, master or family room wing behind the garage). There will be some variation in porch columns and front windows from one Look to another.



April Gladiola, Grande

527.128

© 2013 Art Form Architecture, Inc. All Rights Reserved . <http://www.artformhomeplans.com>

Second Floor

Living Area: 1011 SF

Bedrooms: 3

Bathrooms: 2.0

Ceiling Height Shown: 8'-0"

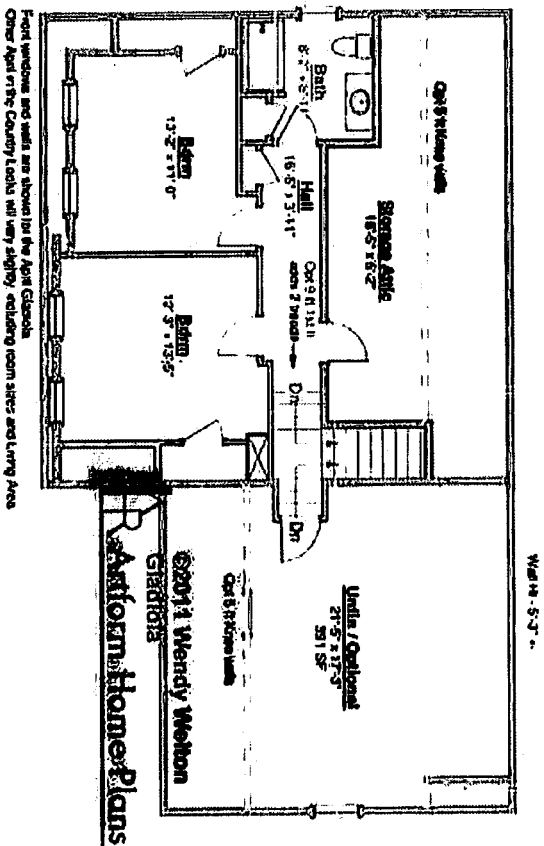
Ceiling Height Possible*: 8'-0"

* - Increasing ceiling height requires a Major Change.

This second floor is the Gladiola "look" of the April in the Country collection, Grande configuration (attached garage, master suite wing behind garage, no rear shed dormer). The other front looks will vary only at the front bedroom - minor dimension difference and associated minor square footage difference for this floor.

Artform Home Plans

April Gladiola
Grande Configuration
Living Area this floor: 820 SF



April Gladiola, Grande

527.128

© 2013 Art Form Architecture, Inc. All Rights Reserved . <http://www.artformhomeplans.com>

Basement Floor

Living Area: 0 SF

Bedrooms: 0

Bathrooms: 0.0

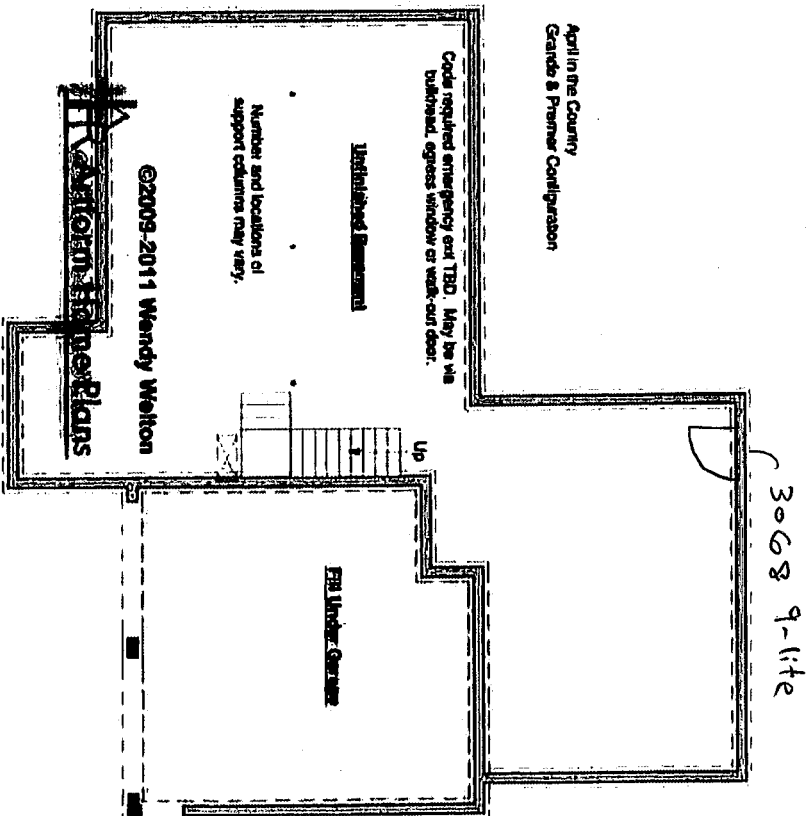
Ceiling Height Shown: 7'-8"

Ceiling Height Possible*: 9'-0"

* - Increasing ceiling height requires a Major Change.

This basement applies to all the April in the Country cottages and bungalows, Grande configuration (attached garage, master or family room wing behind the garage).

Artform Home Plans

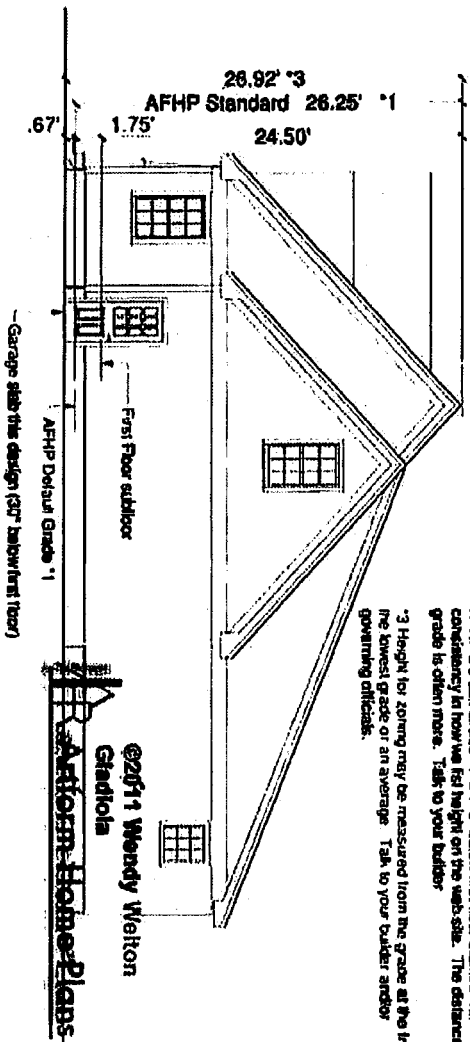


April Gladiola, Grande

527.128

© 2013 Art Form Architecture, Inc. All Rights Reserved . <http://www.artformhomeplans.com>

Heights



April Gladiola
Grande Configuration

AFHP Default Grade *1 is 1'-9" below first floor outdoor for consistency in how we list height on the web site. The distance grade is often more. Talk to your builder.

*3 Height for zoning may be measured from the grade at the lowest grade or an average. Talk to your builder and/or governing officials.

April Gladiola, Grande

527.128

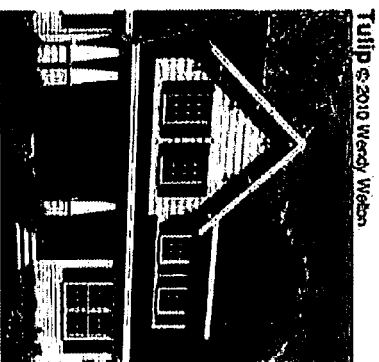
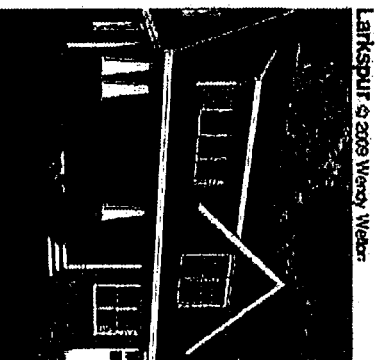
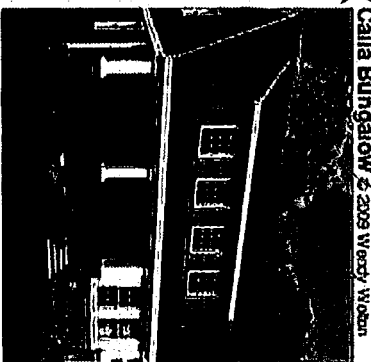
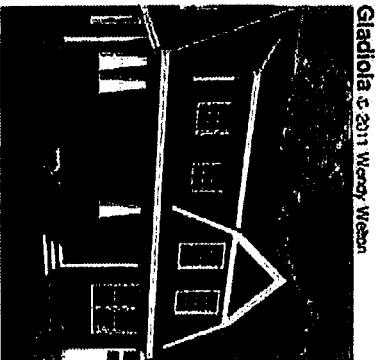
© 2013 Art Form Architecture, Inc. All Rights Reserved . <http://www.artformhomeplans.com>

Alternate Looks

April in the Country Collection Alternate Looks

This floor plan can be adapted to any of the other Looks in the collection, shown below.

Changing to a different Look is considered a single Major Change for pricing (adds 25% if it's the first or only change, adds 6% if you already need another Major Change, such as reversing the plan).



Artform Home Plans