

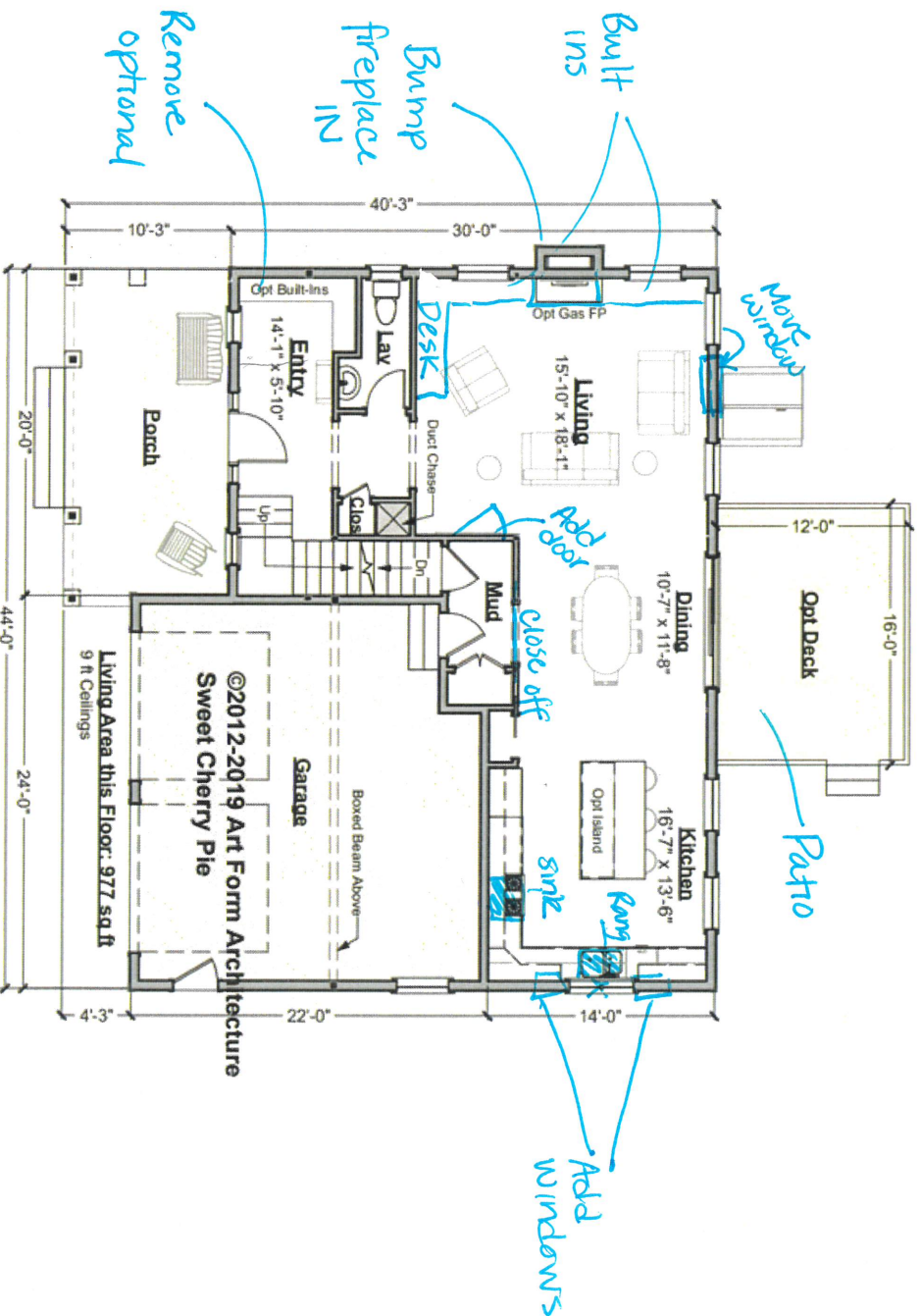
# 481.124.v10 KR Sweet Cherry Pie



## First Floor

	Area	Beds	Baths
Main	977 SF	0	0.5
Future	0 SF	0	0
Apt	0 SF	0	0
Total	977 SF	0	0.5
Ceiling Height			
Shown	9'-0"		
Possible*	8'-0"		

\* See Major Change information on plan page for cost



**Use of this document** is governed by our **Terms and Conditions**, found on our website:  
<http://www.artformhomeplans.com/TermsConditions.a5w>

© 2012 Art Form Architecture, Inc. ALL RIGHTS RESERVED.  
 You may not build this Design without purchasing a License to Build (as defined in our Terms). Unauthorized changes are not permitted and violate copyright laws, which provide substantial penalties for infringement.

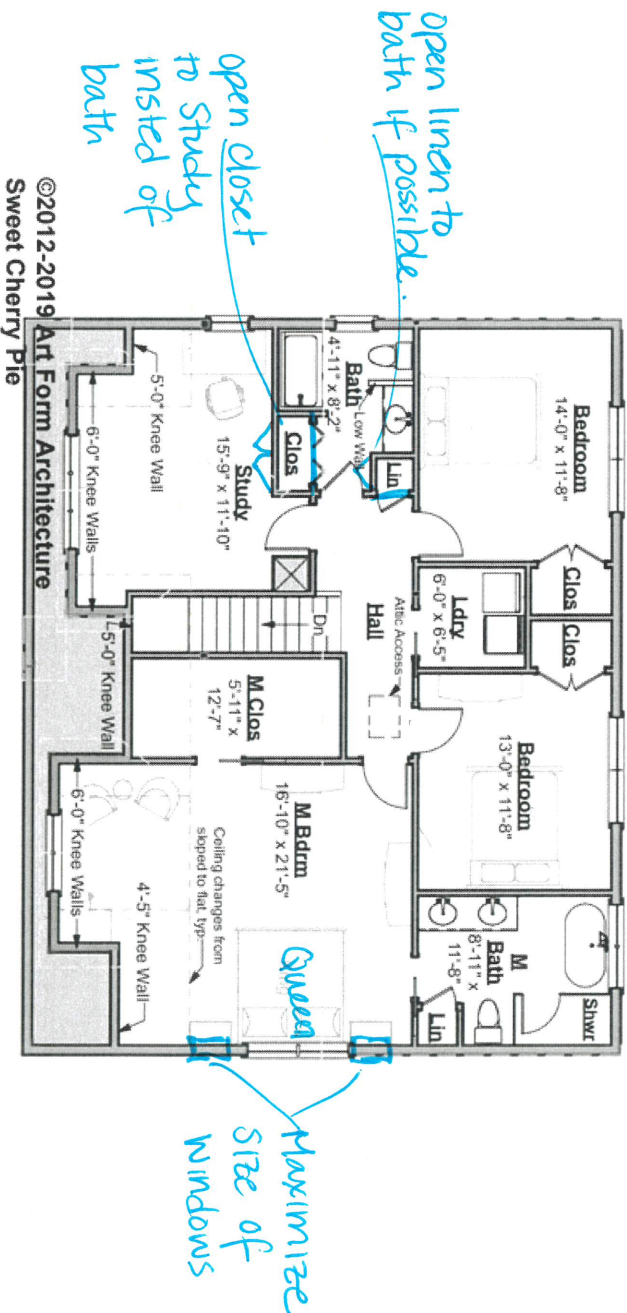
Some features show are optional. Your Purchase & Sale Agreement governs, whether items are labeled "optional" in this document or not.  
 We are not responsible for typographical errors.

# 481.124.v10 KR Sweet Cherry Pie

## Second Floor

	Area	Beds	Baths
Main	1427 SF	3	2
Future	0 SF	1	0
Apt	0 SF	0	0
Total	1427 SF	4	2
Ceiling Height			
	Shown	8'-0"	
	Possible*	9'-0"	

\* See Major Change Information on plan page for cost



Use of this document is governed by our Terms and Conditions, found on our website: <http://www.artformhomeplans.com/TermsConditions.a5w>

© 2012 Art Form Architecture, Inc. ALL RIGHTS RESERVED.  
You may not build this Design without purchasing a License to Build (as defined in our Terms). Unauthorized changes are not permitted and violate copyright laws, which provide substantial penalties for infringement.

Some features show are optional. Your Purchase & Sale Agreement governs, whether items are labeled "optional" in this document or not.  
We are not responsible for typographical errors.