

Caleb, Prime Expanded

591.122 KR

© 2013 Wendy Welton, all rights reserved . You may not build this design without purchasing a license, even if you make changes. This design may have geographic restrictions.



603-431-9559



Some items shown are optional and/or may vary. Builder's written specifications always govern.

1. Gas fireplace and it's surround or mantel
2. Kitchen - island, cabinet style & trim, countertop material, etc.
3. Door styles and trim
4. Window grilles and trim, window treatments
5. Stair balusters or low walls at stairs
6. Lighting
7. Material selections (flooring, siding, roofing, paint colors, etc.)
8. Other furnishings
9. Landscaping, paving and walkways
10. Gutters, shutters and other exterior trim components
11. Deck – size, railing style, stair location, etc.
12. Amount of exposed basement and/or wood framed walls at basement.

These images are not of any specific building site. Sun and view through windows will vary, as will the site around the house on the exterior and the slope of the land.

10/2/2013

Caleb, Prime Expanded

591.122 KR

© 2013 Wendy Welton, all rights reserved . You may not build this design without purchasing a license, even if you make changes. This design may have geographic restrictions.

 **Artform Home Plans**

603-431-9559



©2013 Wendy Welton
Caleb

10/2/2013

Caleb, Prime Expanded

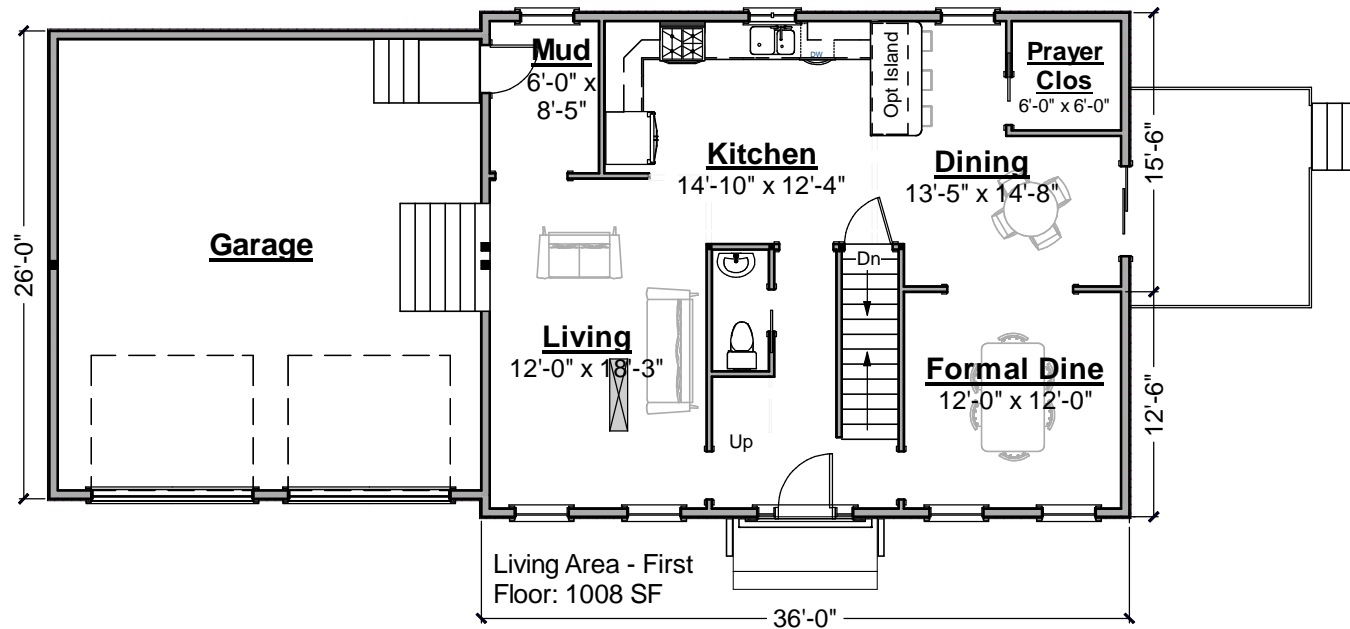
591.122 KR

© 2013 Wendy Welton, all rights reserved . You may not build this design without purchasing a license, even if you make changes. This design may have geographic restrictions.



603-431-9559

Some items shown may be optional, and some items labeled "optional" may be included. See your builder's spec list and/or your P&S.



H:\by Collection\Classy Colonials\Caleb\591.124 Caleb Classic\591.124.v1 KR Caleb Classic - Copy.plan

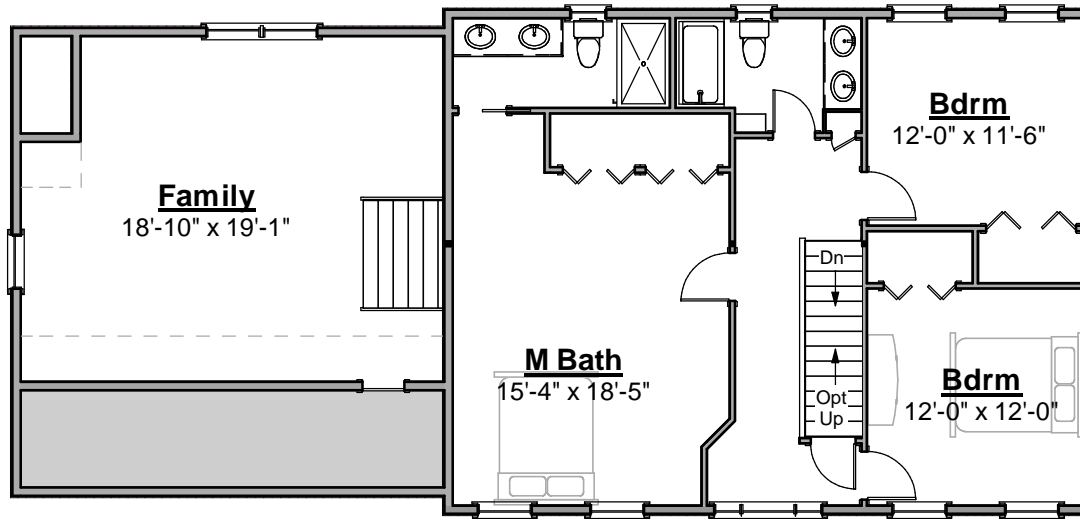
10/2/2013

Caleb, Prime Expanded

591.122 KR

© 2013 Wendy Welton, all rights reserved . You may not build this design without purchasing a license, even if you make changes. This design may have geographic restrictions.

 **Artform Home Plans**
603-431-9559



Living Area - Second Floor: 1471 SF

H:\by Collection\Classy Colonials\Caleb\591.124 Caleb Classic\591.124.v1 KR Caleb Classic - Copy.plan

10/2/2013

Caleb, Prime Expanded

591.122 KR

© 2013 Wendy Welton, all rights reserved . You may not build this design without purchasing a license, even if you make changes. This design may have geographic restrictions.

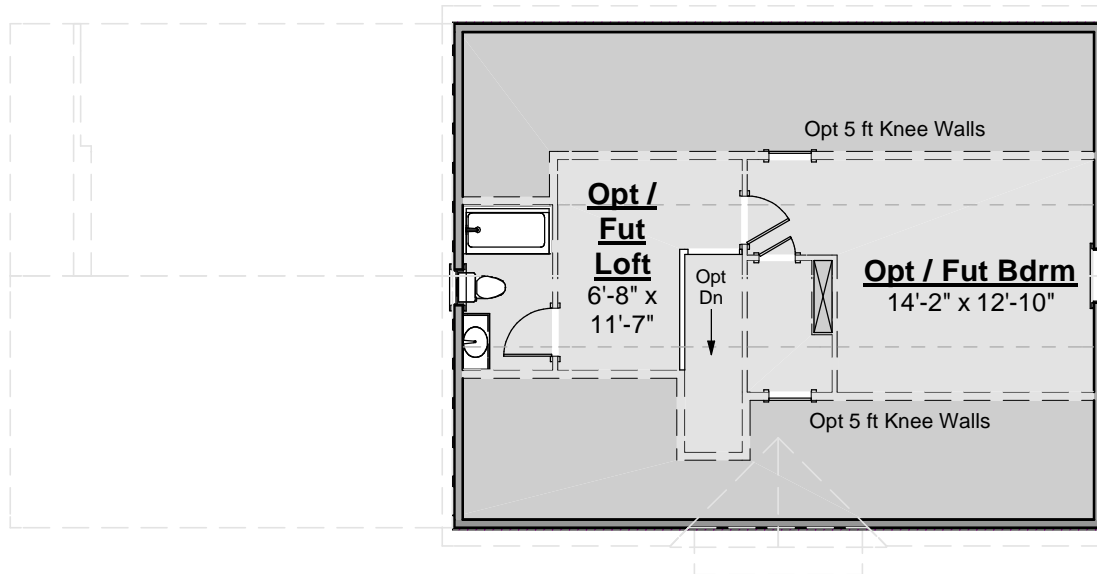


603-431-9559

△ Duct chase varies from Caleb to Collin. Duct chase shown is recommended when Master Suite is not adjacent (Collin).

△ For 3rd floor Egress Window to meet code, grade must be no more than 21" below first floor, first floor main house ceilings must not exceed 8 ft, and 3rd floor window must be tempered and have window guard. And yes, Egress Window is required even if you call it "storage".

Living Area - Opt Third Floor: 483 SF



H:\by Collection\Classy Colonials\Caleb\591.124 Caleb Classic\591.124.v1 KR Caleb Classic - Copy.plan

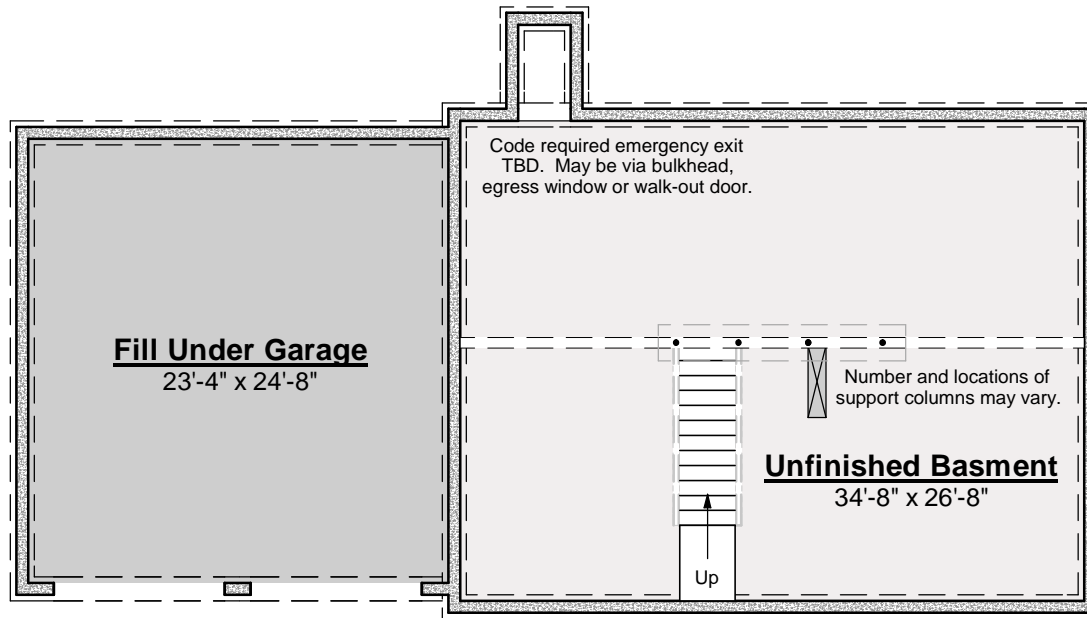
10/2/2013

Caleb, Prime Expanded

591.122 KR

© 2013 Wendy Welton, all rights reserved . You may not build this design without purchasing a license, even if you make changes. This design may have geographic restrictions.

 **Artform Home Plans**
603-431-9559



10/2/2013

Caleb, Prime Expanded

591.122 KR

© 2013 Wendy Welton, all rights reserved . You may not build this design without purchasing a license, even if you make changes. This design may have geographic restrictions.

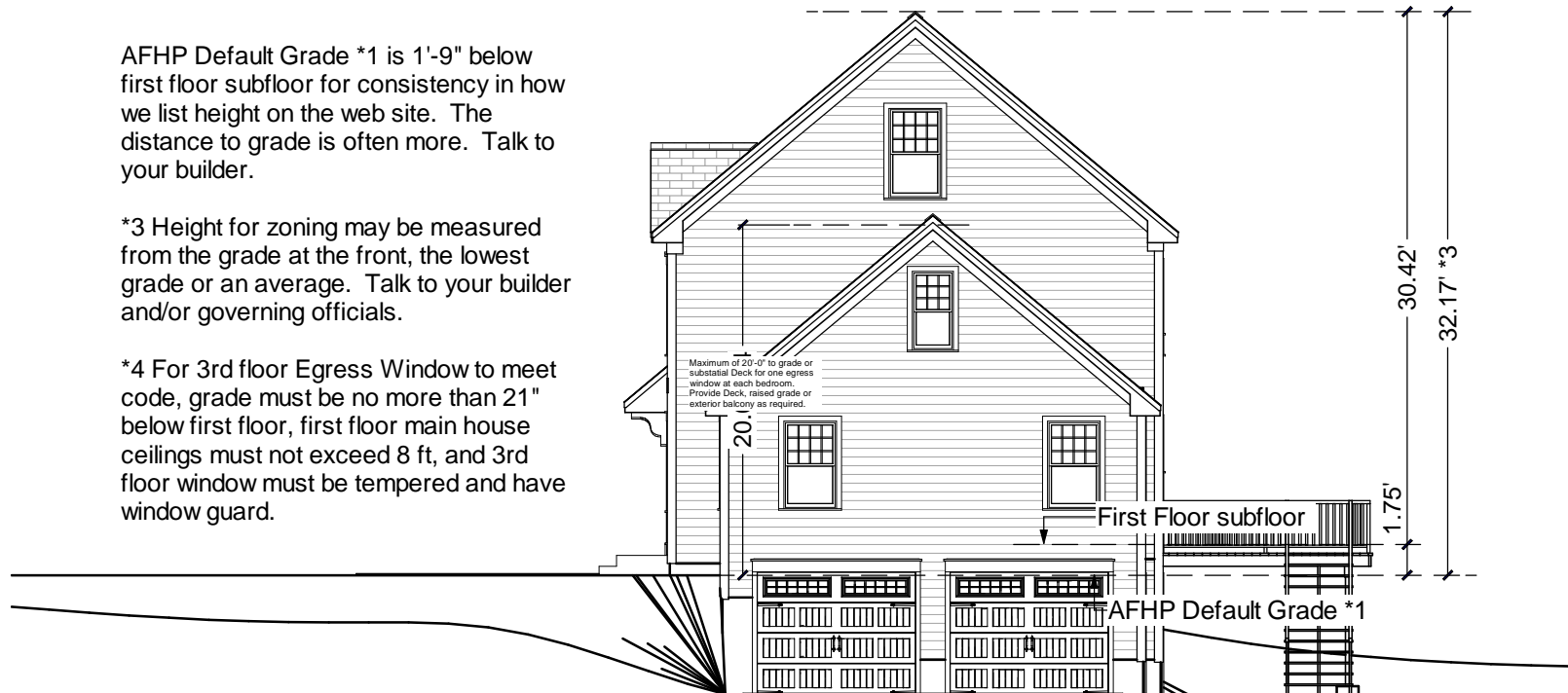
Artform Home Plans

603-431-9559

AFHP Default Grade *1 is 1'-9" below first floor subfloor for consistency in how we list height on the web site. The distance to grade is often more. Talk to your builder.

*3 Height for zoning may be measured from the grade at the front, the lowest grade or an average. Talk to your builder and/or governing officials.

*4 For 3rd floor Egress Window to meet code, grade must be no more than 21" below first floor, first floor main house ceilings must not exceed 8 ft, and 3rd floor window must be tempered and have window guard.



H:\by Collection\Classy Colonials\Caleb\591.124 Caleb Classic\591.124.v1 KR Caleb Classic - Copy.plan