

7/18/2013

# Brandywine Prime

## 260.120

© 2008-2013 Wendy Welton, all rights reserved . You may not build this design without purchasing a license, even if you make changes. This design may have geographic restrictions.



603-431-9559



©2008-2013 Wendy Welton  
Brandywine

Some items shown are optional and/or may vary. Builder's written specifications always govern.

1. Gas fireplace and it's surround or mantel
2. Kitchen - island, cabinet style & trim, countertop material, etc.
3. Door styles and trim
4. Window grilles and trim, window treatments
5. Stair balusters or low walls at stairs
6. Lighting
7. Material selections (flooring, siding, roofing, paint colors, etc.)
8. Other furnishings
9. Landscaping, paving and walkways
10. Gutters, shutters and other exterior trim components
11. Deck – size, railing style, stair location, etc.
12. Amount of exposed basement and/or wood framed walls at basement.

These images are not of any specific building site. Sun and view through windows will vary, as will the site around the house on the exterior and the slope of the land.

7/18/2013

# Brandywine Prime

## 260.120

© 2008-2013 Wendy Welton, all rights reserved . You may not build this design without purchasing a license, even if you make changes. This design may have geographic restrictions.

 **Artform Home Plans**  
603-431-9559



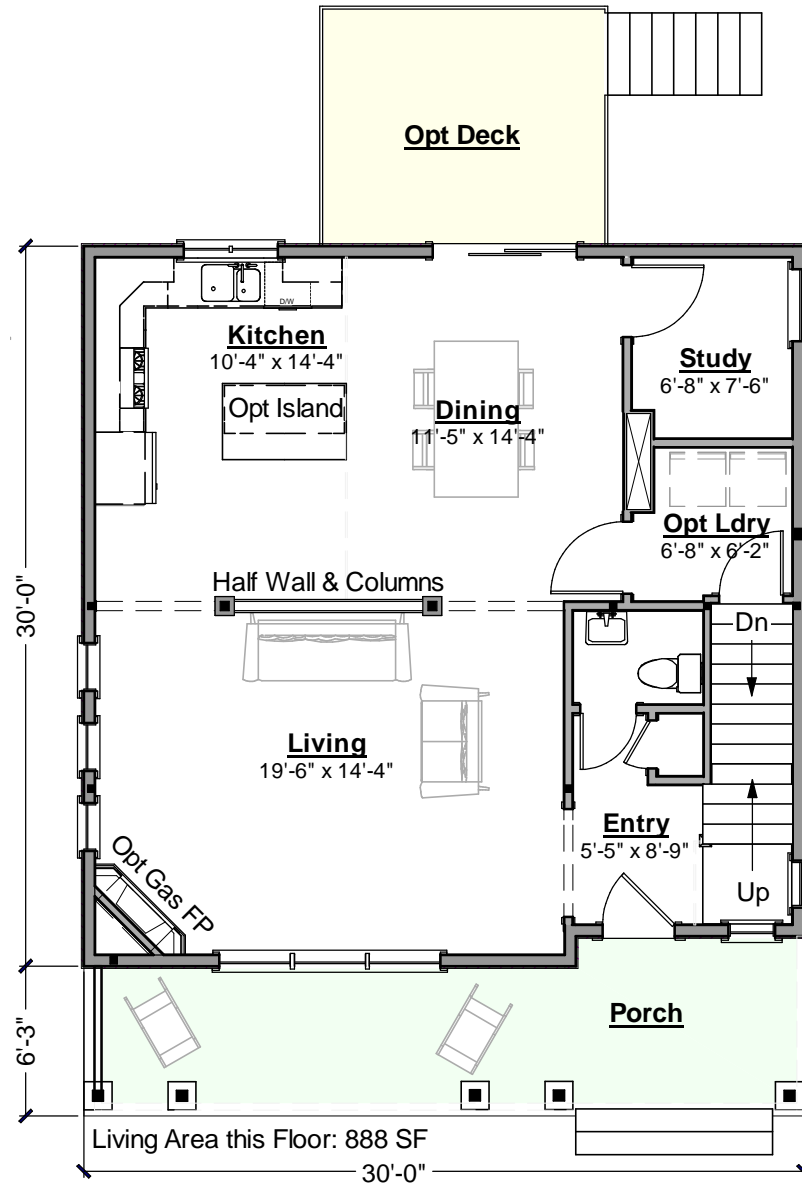
7/18/2013

# Brandywine Prime

## 260.120

© 2008-2013 Wendy Welton, all rights reserved . You may not build this design without purchasing a license, even if you make changes. This design may have geographic restrictions.

**Artform Home Plans**  
603-431-9559





7/18/2013

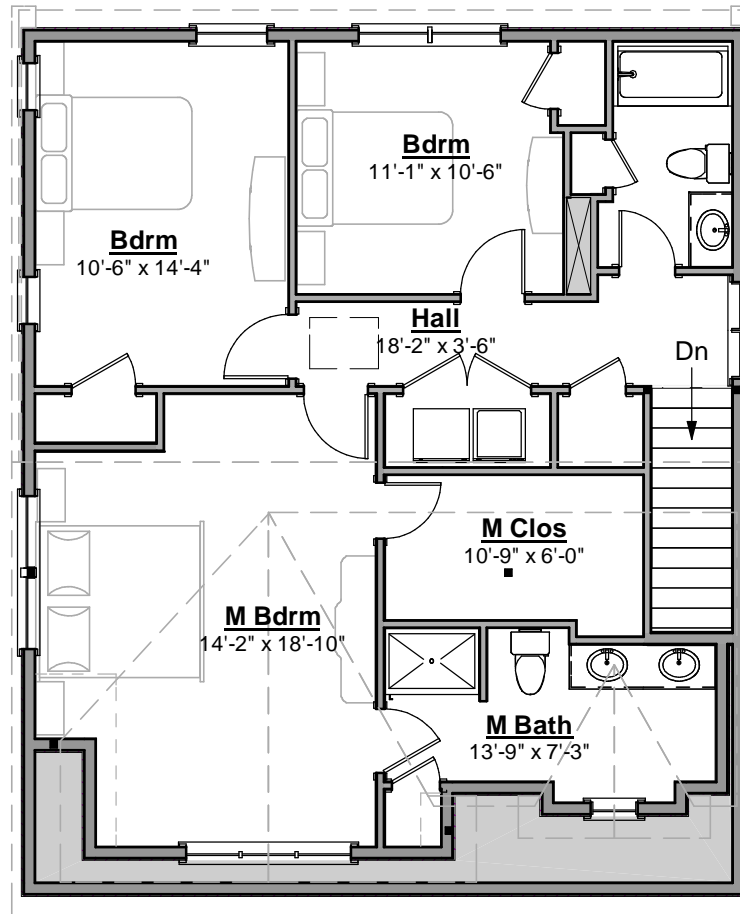
# Brandywine Prime

260.120

© 2008-2013 Wendy Welton, all rights reserved . You may not build this design without purchasing a license, even if you make changes. This design may have geographic restrictions.

**Artform Home Plans**  
603-431-9559

Living Area this Floor: 992 SF



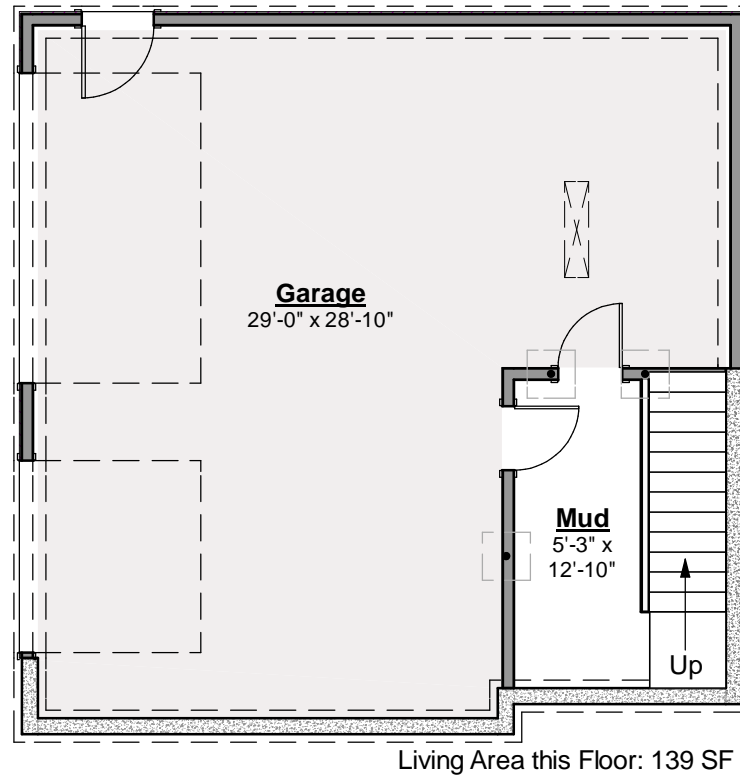
7/18/2013

# Brandywine Prime

## 260.120

© 2008-2013 Wendy Welton, all rights reserved . You may not build this design without purchasing a license, even if you make changes. This design may have geographic restrictions.

**Artform Home Plans**  
603-431-9559



7/18/2013

# Brandywine Prime

## 260.120

© 2008-2013 Wendy Welton, all rights reserved . You may not build this design without purchasing a license, even if you make changes. This design may have geographic restrictions.

**Artform Home Plans**

603-431-9559

AFHP Default Grade \*1 is 1'-9" below first floor subfloor for consistency in how we list height on the web site. The distance to grade is often more. Talk to your builder.

Basement Slab \*2 is 103" below the first floor subfloor, assumes a 7'-10" pour from 8 ft forms. Your distance may vary. Talk to your builder.

\*3 Height for zoning may be this dimension, from the lowest grade. It could also be from either the front or average grade. Talk to your builder and/or governing officials.

