

3/3/2021

# Brickie Classic

578.124.v12 GL (3/3/2021)

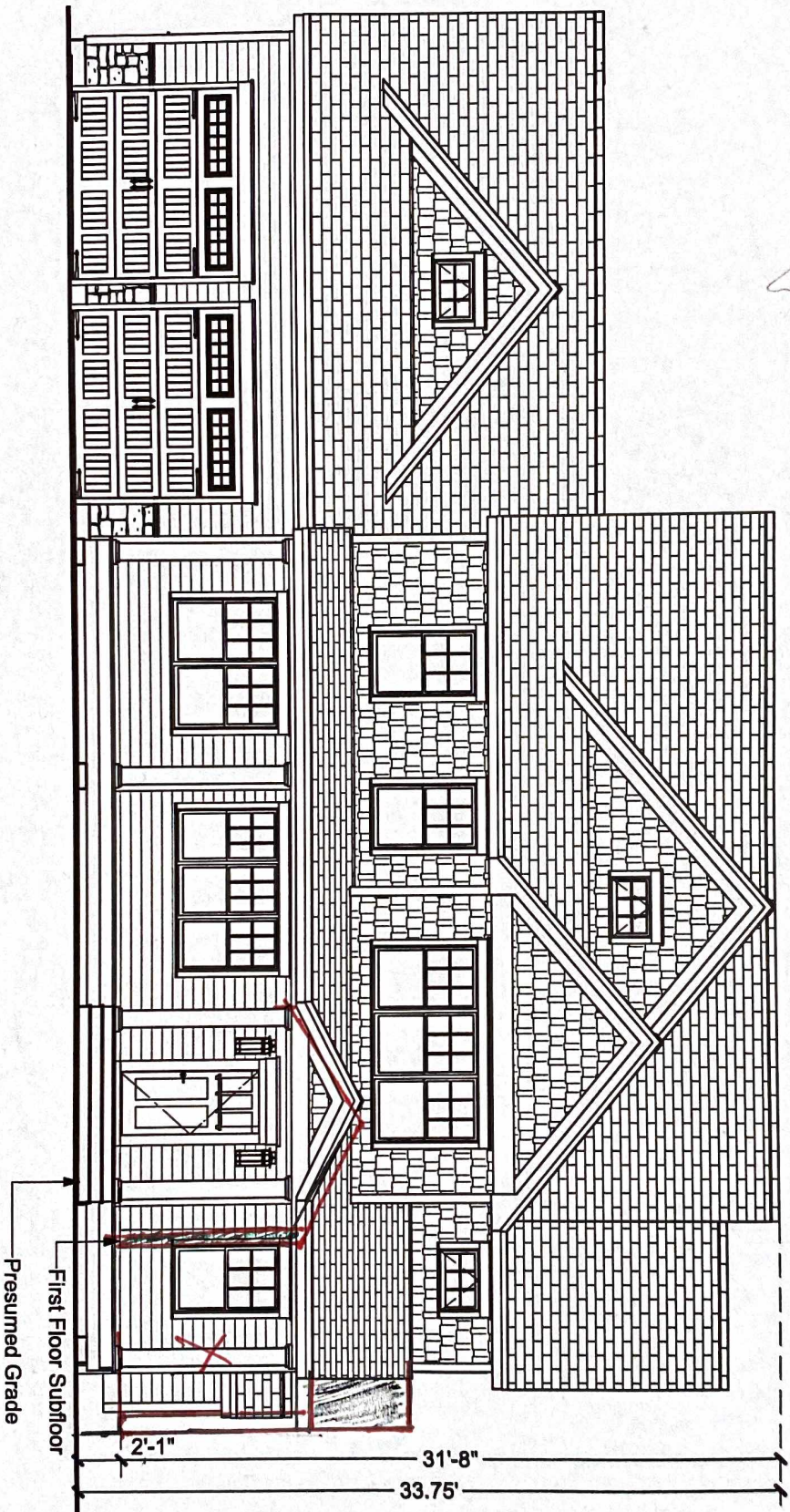
## Front Elevation

Scale: 1/8" = 1'-0"

© 2013-2021 Art Form Architecture, Inc., all rights reserved. You may not build this design without purchasing a license, even if you make changes. This design may have geographic restrictions.

**Artform Home Plans**

603-431-9559





3/3/2021

# Brickle Classic

578.124.v12 GL (3/3/2021)

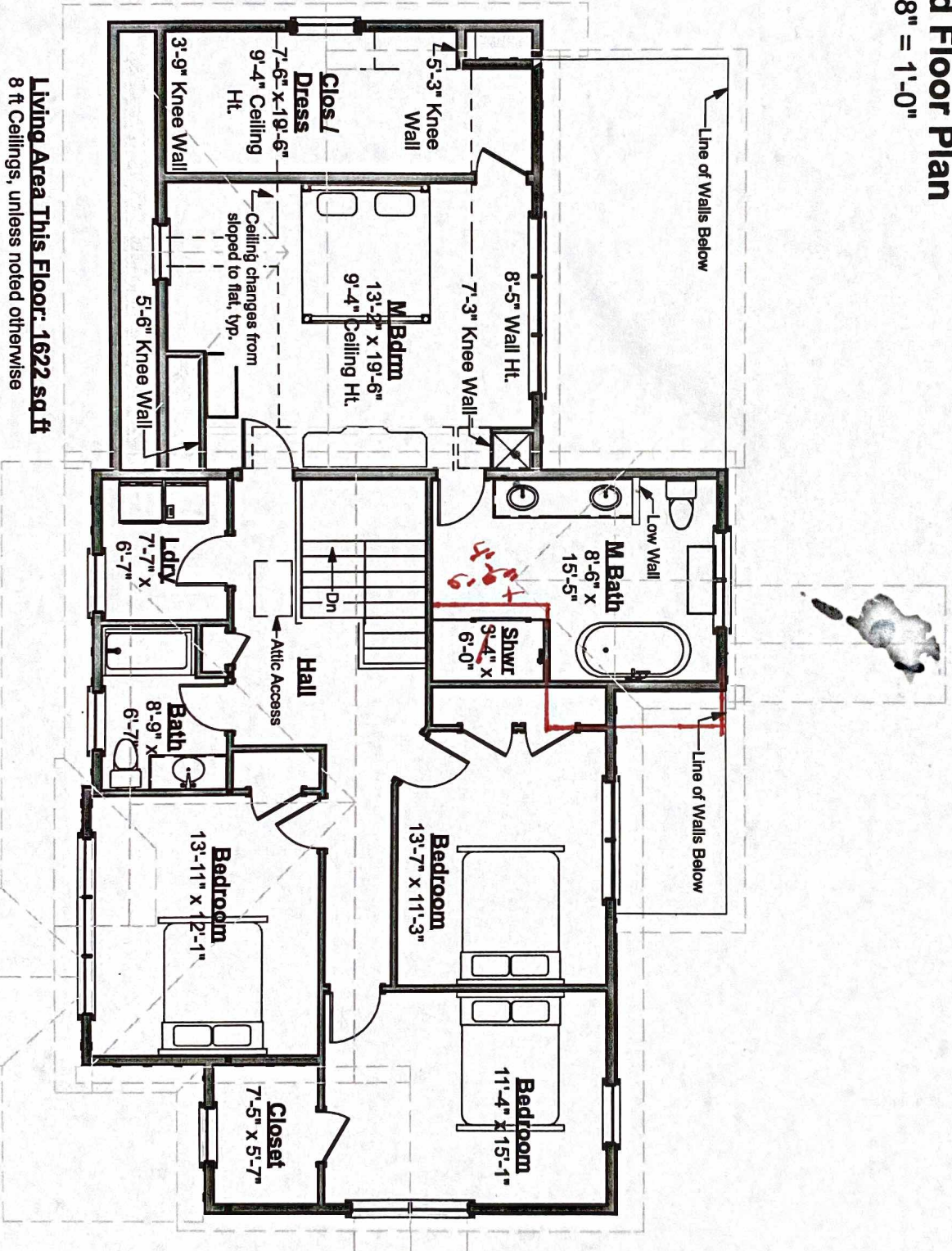
## Second Floor Plan

Scale: 1/8" = 1'-0"

© 2013-2021 Art Form Architecture, Inc., all rights reserved. You may not build this design without purchasing a license, even if you make changes. This design may have geographic restrictions.

**Artform Home Plans**

603-431-9559



**Living Area This Floor: 1622 sq ft**  
8 ft Ceilings, unless noted otherwise



# Brickie Classic

578.124.v12 GL (3/3/2021)

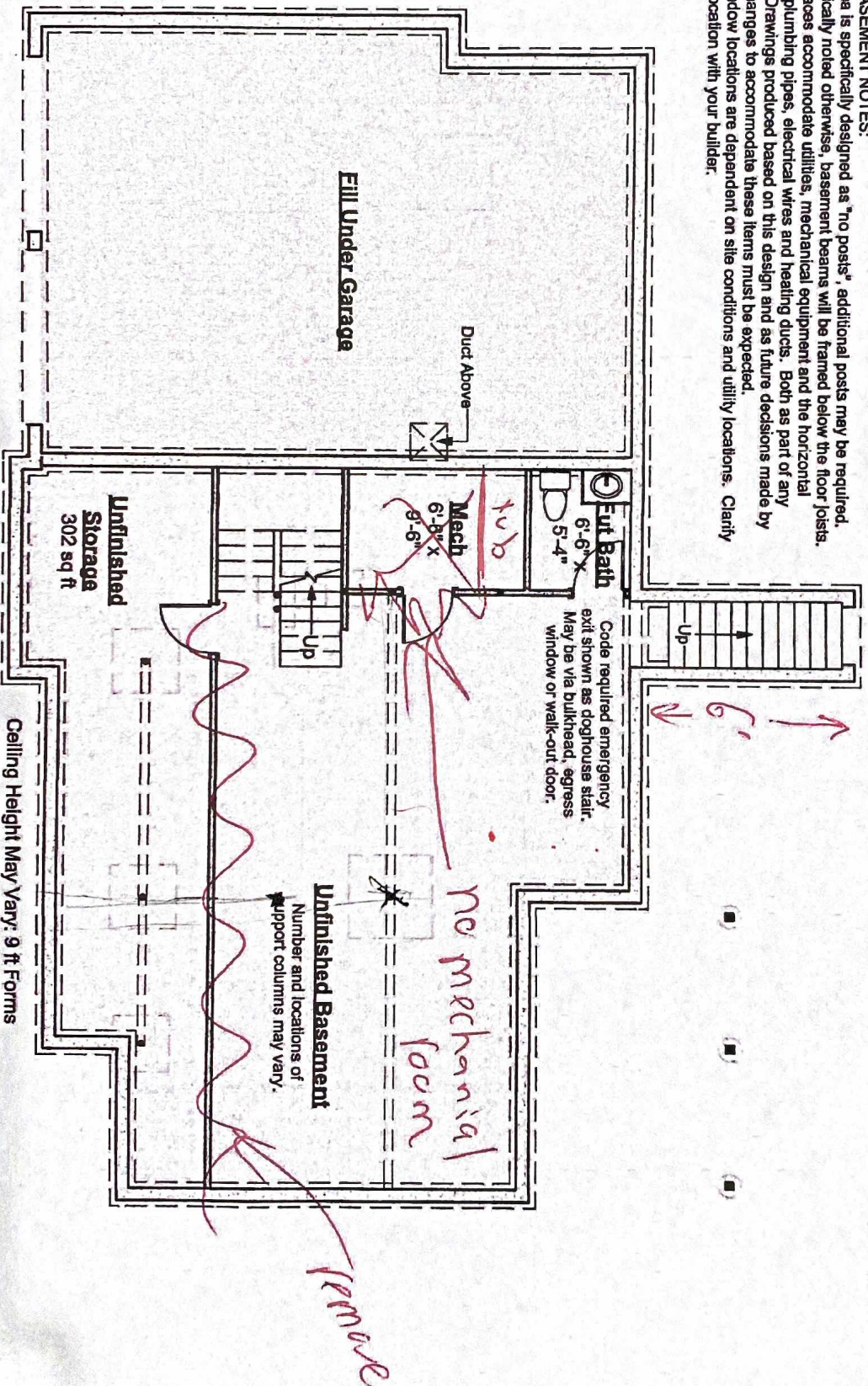
© 2013-2021 Art Form Architecture, Inc., all rights reserved. You may not build this design without purchasing a license, even if you make changes. This design may have geographic restrictions.

**Artform Home Plans**

603-431-9559

## IMPORTANT BASEMENT NOTES:

- Unless an area is specifically designed as "no posts", additional posts may be required.
- Unless specifically noted otherwise, basement beams will be framed below the floor joists.
- Basement spaces accommodate utilities, mechanical equipment and the horizontal movement of plumbing pipes, electrical wires and heating ducts. Both as part of any Construction Drawings produced based on this design and as future decisions made by the builder, changes to accommodate these items must be expected.
- Basement window locations are dependent on site conditions and utility locations. Clarify number and location with your builder.



## First Floor Plan

Scale: 1/8" = 1'-0"