

Lot 7 Clear

12/3/12 eh.

All We Need Cape

Changes to \$295,000

- ✓ ~~<600>~~ Remove 2 columns
- ~~<900>~~ Shrink front porch to 6' deep.
- ~~<520>~~ made rear deck 10 x 6
- ~~<350>~~ eliminate sliding door, (add back single door)
- ✓ ~~<600>~~ ~~<900>~~ eliminate one window in living room.
- ✓ ~~<450>~~ ~~<2>~~ eliminate hall closet and Bedroom closet
- ✓ ~~<250>~~ eliminate door into bedroom
- ~~<3610>~~

<2350>

12/3/12

New price \$292,650

- 1st Floor Walls SW Rainwashed 6211 $\Delta=0$
No charge - Tint the primer!

- Discount <750>

Final Price \$291,900

Do P+S!!

Eric Chinburg

From: J Chinburg
Sent: Friday, November 30, 2012 4:14 PM
To: Eric Chinburg

Attachments: AR-M237_20121130_164537.pdf



AR-M237_20121130_164537.pdf (1...

Eric,

I priced Linda's plan with the following upgrades:

- 1) Deck increase to 10'x8' which should be fine for a grill and small table.
- 2) 6' Patio slider to deck in place of door and window.
- 3) double window in fireplace location.
- 4) Add window in bedroom.
- 5) add 2 columns in living room.

The total with these items comes to \$295,000.

I did not include a fireplace which would add \$3900 and we would have to shift or remove one window if it is put in the corner. We can discuss the entry closet rearrangement, which we should be able to do for \$200 if she goes with our standard paneled doors but the French doors would add about \$1000 more.

Let me know if you need anything else.

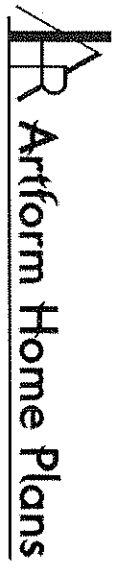
Jon

- PIPING for future gas fireplace

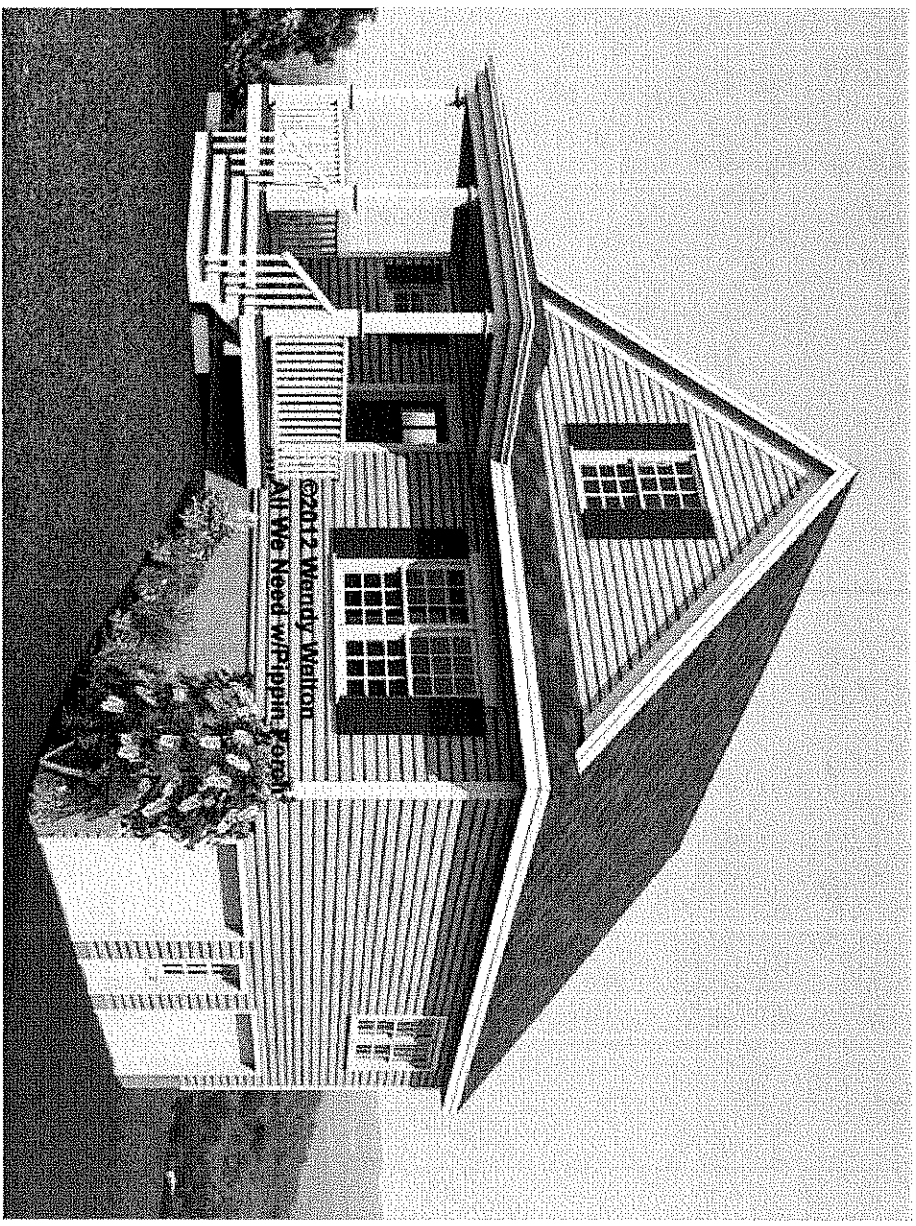
11/30/12

© 2012 Wendy Walton, all rights reserved

All We Need, Custom



295K as amended



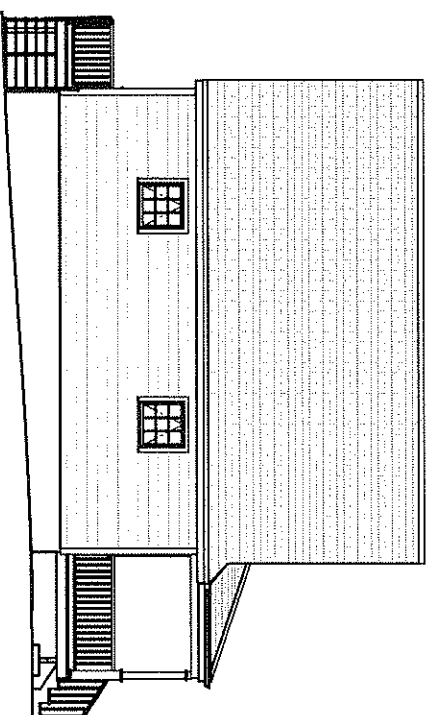
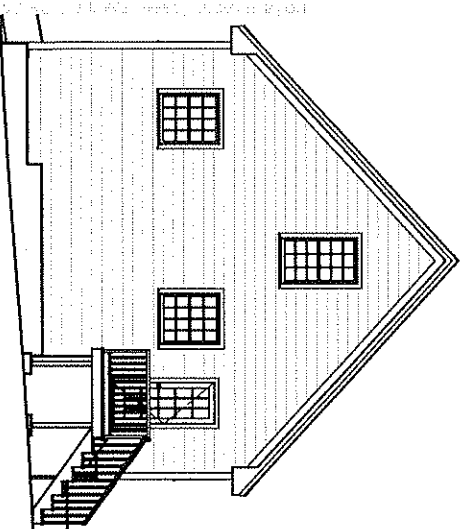
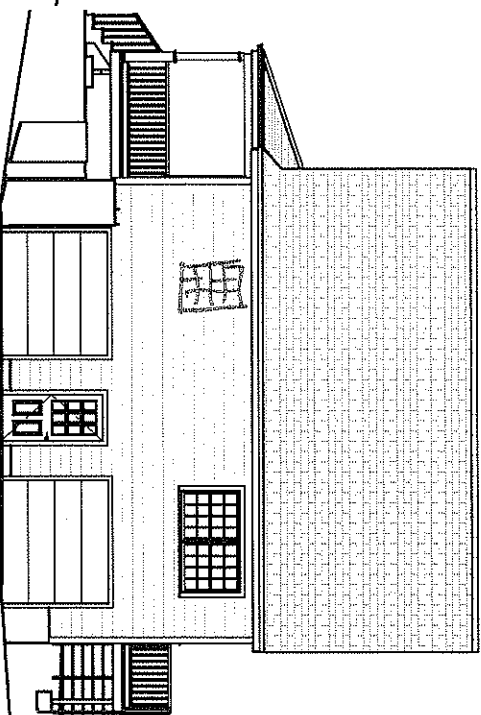
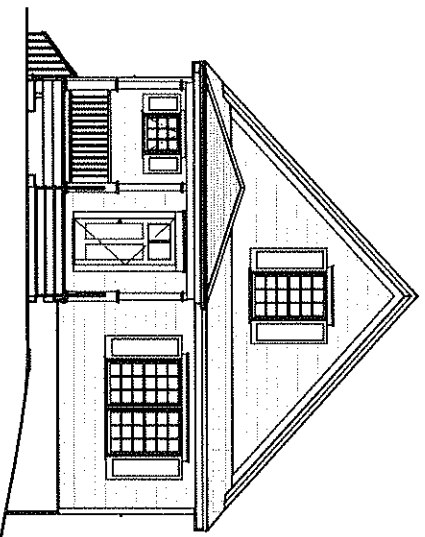
You may not build this design without purchasing a license, even if you make changes. This design may have geographic restrictions. Contact the Builder, RE Agent or call Artform Home Plans at 603-431-9559

	Base
	Above Grade
Living Area	1410
Bedroom	3
Baths	2

Some items optional or designer's vision. Builder's written specifications always govern. Dimensions supercede Square Foot data.

All We Need, Custom


© 2012 Wendy Welton, all rights reserved



Some items shown are optional and/or may vary. Builder's written specifications always govern.

1. Gas fireplace and it's surround or mantel
2. Kitchen - island, cabinet style & trim, countertop material, etc.
3. Door styles and trim
4. Window grilles and trim, window treatments
5. Stair balusters or low walls at stairs
6. Lighting
7. Material selections (flooring, siding, roofing, paint colors, etc.)
8. Other furnishings
9. Landscaping, paving and walkways
10. Gutters, shutters and other exterior trim components
11. Deck - size, railing style, stair location, etc.
12. Amount of exposed basement and/or wood framed walls at basement.

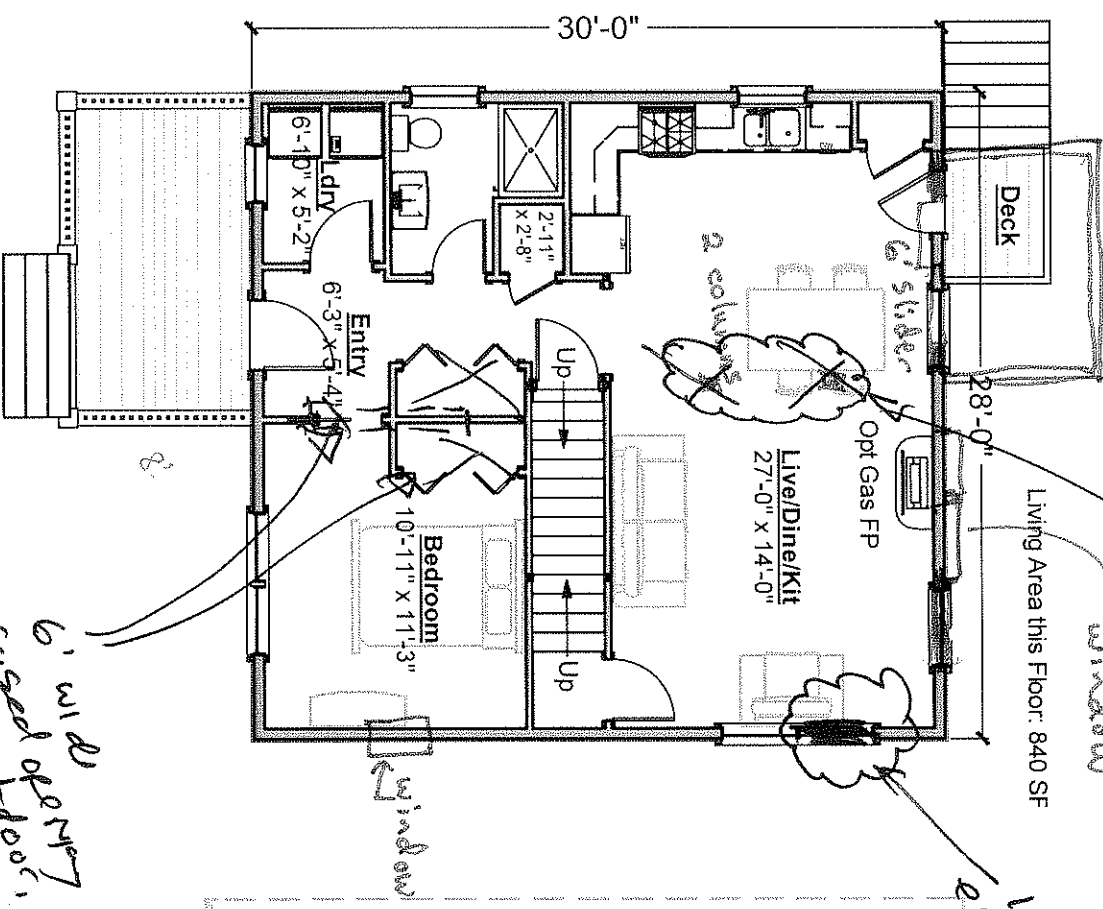
These images are not of any specific building site. Sun and view through windows will vary, as will the site around the house on the exterior and the slope of the land.

 **Artform Home Plans**

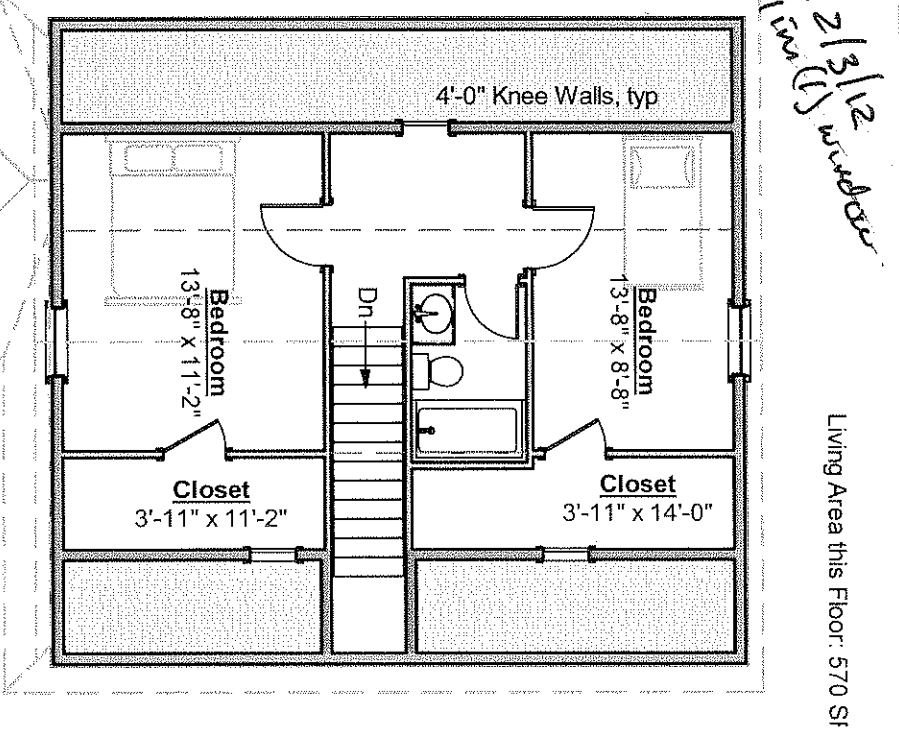
All We Need, Custom

© 2012 Wendy Welton, all rights reserved

First Floor 10x8 deck



Second Floor



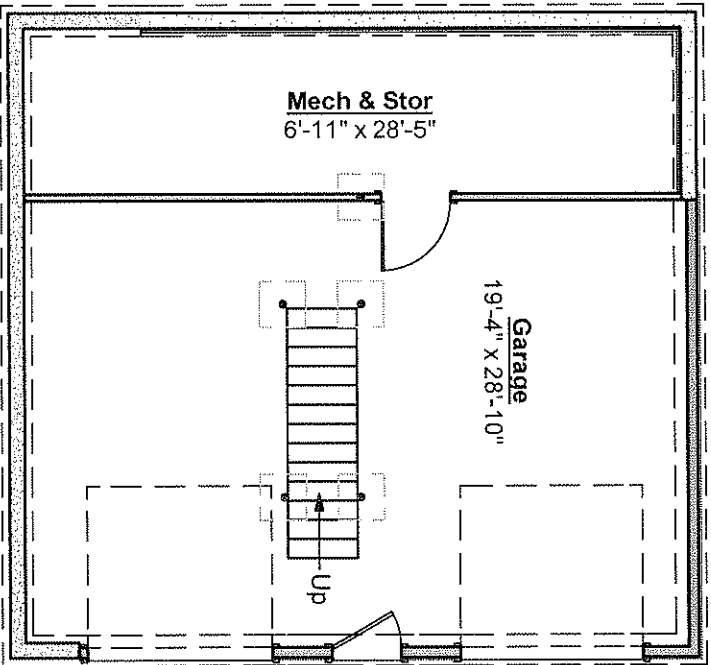
Artform Home Plans

12/3/12 for include pick up place future good

All We Need, Custom

© 2012 Wendy Walton, all rights reserved

Basement





Artform Home Plans

603.431.9559

[Home](#) [Photos & Builder Galleries](#) [Service for Homeowners](#) [Service for Builders](#) [Prices & Details](#) [About Us](#)

Plans by Lifestyle

Aging in Place

For empty nesters, 1st floor masters, etc.

Generations™

For 2 generation families

Home Works™

Include work spaces large and small

Entertainers™

Entertainment friendly, all sizes

Simple Family™

2 1/2 kids - with or without the dog!

by Size/Complexity

Small Wonders

Small Home Plans - LEED neutral or better

Good Manors

A better way to do the modern "Manor" house

Expandables

Include unfinished expansion space

Carpenter

Relatively simple framing and lines

Patron

More complex shapes, framing or detailing

Special Pricing

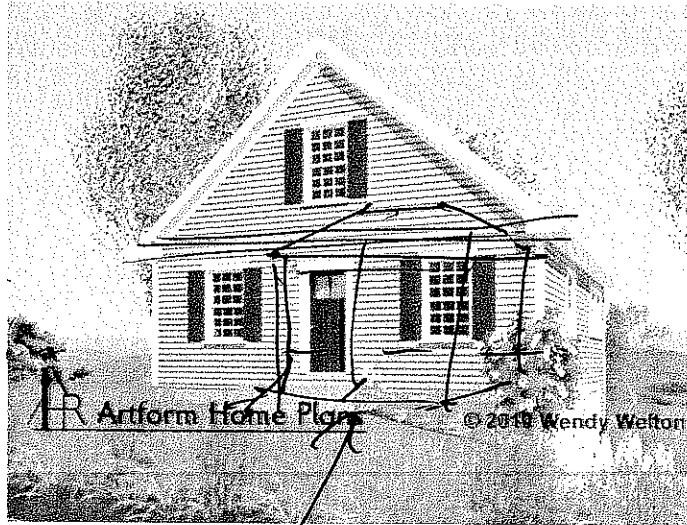
Free & Honor

Free or discounting to veterans

All We Need

All We Need is a little bit bigger than All I Need. We added just enough to fit a second bath upstairs. Like it's predecessor, All We Need is 100% dimensional lumber, not a stick bigger than 2x10. The rafters are 20 feet. Even the foundation is simple - a wood framed bearing wall and no steel columns. The 10:12 roof is a good pitch for solar panels. Want the Living Room in the front? Check out Seabee. Need just a bit more? Check out the Snug Harbor series.

This group of designs is the start of our Free & Honor program. We're starting with the smallest ones. If you need something bigger, stay tuned or call us up!



Plan No. 192.001

Width: 28 Ft Depth: 30 Ft Height: 23.1 Ft

Main	Future	Apt	Main + Future	Main + Apt	All
Main House	Living Area	1368	SF		
Bedrooms		3			
Baths		2			

Construction Drawings

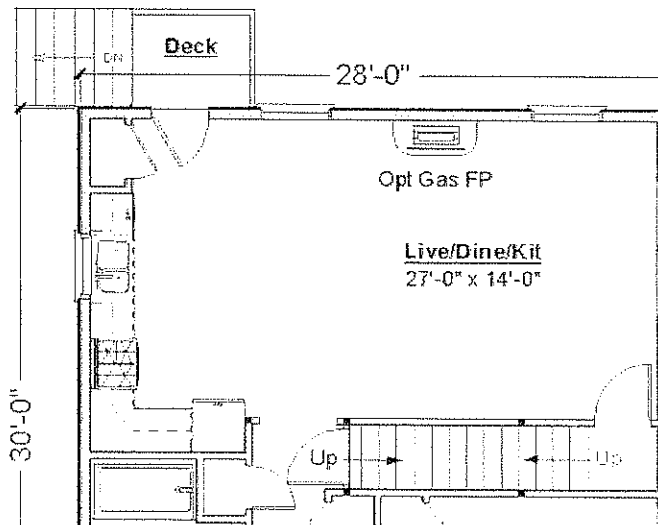
? Construction Plans	\$900.00
? Reverse	\$225.00
? Price Group:	H1

Sub-Total: \$0.00

[Add to Cart](#)

Reminder: This is a copyright protected design. Use of our designs or images without first obtaining a Copyright License from us is a violation of U.S. copyright laws, punishable with fines up to \$150,000, civil damages, and fines specified in our Terms of Use. Making changes, even significant ones, does not change this. "Copyright Infringement" is a polite phrase for Stealing. It hurts us, our staff and our legitimate clients. We pay for information leading to the successful recovery of fines or damages - 603-431-9559 - tips kept confidential

First Floor Plan



add "pippin" porch?
5 gable
tower

best
est 284.9
add porch 2nd bath
5k?
290?