



# Artform Home Plans

603.431.9559

[Home](#) [Photos & Builder Galleries](#) [Service for Homeowners](#) [Service for Builders](#) [Prices & Details](#) [About Us](#)

## Plans by Lifestyle

### Aging in Place

For empty nesters, 1st floor masters, etc.

### Generations™

For 3 generation families

### Home Works™

Include work spaces large and small

### Entertainers™

Entertainment friendly all sizes

### Simple Family™

2 1/2 kids with or without the dog!

## by Size/Complexity

### Small Wonders

Small Home Plans - LEED neutral or better

### Good Manors

A better way to do the modern "Manor" house

### Expandables

Include unfinished expansion space

### Carpenter

Relatively simple framing and lines

### Patron

More complex shape, framing or detailing

## Special Pricing

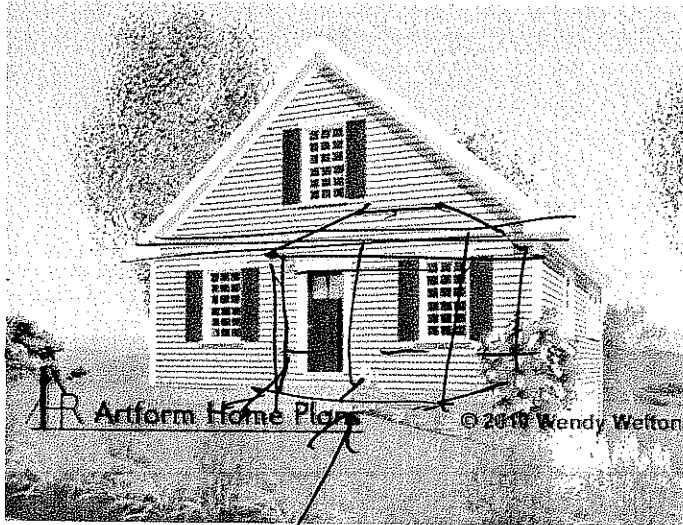
### Free & Honor

Free or discounted to veterans

## All We Need

All We Need is a little bit bigger than All I Need. We added just enough to fit a second bath upstairs. Like it's predecessor, All We Need is 100% dimensional lumber, not a stick bigger than 2x10. The rafters are 20 feet. Even the foundation is simple - a wood framed bearing wall and no steel columns. The 10:12 roof is a good pitch for solar panels. Want the Living Room in the front? Check out Seabee. Need just a bit more? Check out the Snug Harbor series.

This group of designs is the start of our Free & Honor program. We're starting with the smallest ones. If you need something bigger, stay tuned or call us up!



Plan No. 192.001

Width: 28 Ft Depth: 30 Ft Height: 23.1 Ft

Main	Future	Apt	Main + Future	Main + Apt	All
Main House Living Area	1368	SF			
Bedrooms	3				
Baths	2				

### Construction Drawings

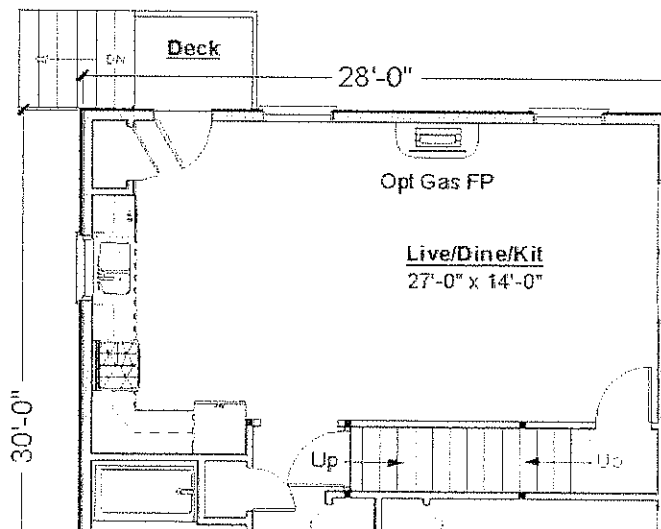
Construction Plans	\$900.00
Reverse	\$225.00
Price Group:	H1

Sub-Total: \$0.00

[Add to Cart](#)

Reminder: This is a copyright protected design. Use of our designs or images without first obtaining a Copyright License from us is a violation of U.S. copyright laws, punishable with fines up to \$150,000, civil damages, and fines specified in our Terms of Use. Making changes, even significant ones, does not change this. "Copyright Infringement" is a polite phrase for Stealing. It hurts us, our staff and our legitimate clients. We pay for information leading to the successful recovery of fines or damages - 603-431-9559 - tips kept confidential

## First Floor Plan



add "pippin" porch?  
+ gable  
tower

best  
est 284.9  
add porch 2nd bay  
5k?  
290?



# Artform Home Plans

603.431.9559

[Home](#) [Photos & Builder Galleries](#) [Service for Homeowners](#) [Service for Builders](#) [Prices & Details](#) [About Us](#)

## Plans by Lifestyle

### Aging in Place

For empty nesters, 1st floor masters, etc.

### Generations™

For 3 generation families.

### Home Works™

Include work spaces large and small.

### Entertainers™

Entertainment friendly, all sizes.

### Simple Family™

2 1/2 kids, with or without the dog!

## by Size/Complexity

### Small Wonders

Small Home Plans - LEED neutral or better.

### Good Manors

A better way to do the modern "Manor" house.

### Expandables

Include unfinished expansion space.

### Carpenter

Relatively simple framing and lines.

### Patron

More complex shape framing or detailing.

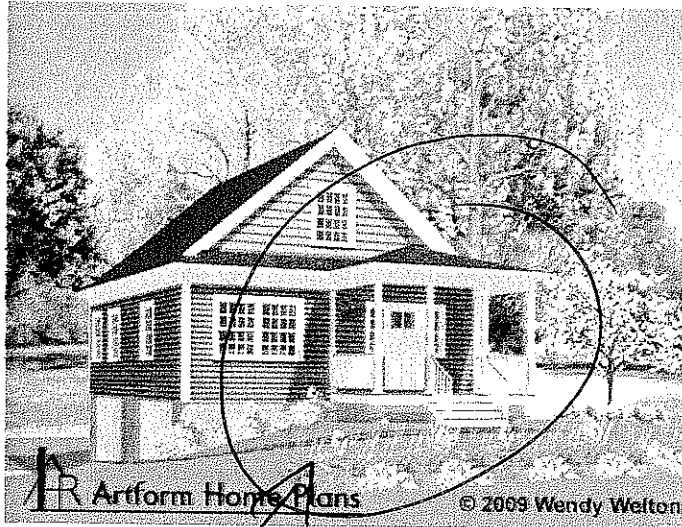
## Special Pricing

### Free & Honor

Free or discounted to veterans.

## Pippin

Pippin is for the single person who just doesn't need much and is budget conscious. It's cute, but not "cutesy". There's a door on the stairs so it can be closed off when not in use, or even left unfinished. The garage under meets covenants that require 2 cars. Putting it on the side opposite the front door allows grading that avoids a retaining wall.



Plan No. 185.002

Width: 26 Ft Depth: 38 Ft Height: 22.5 Ft

	Main	Future	Apt	Main + Future	Main + Apt	All
Main House Living Area	1259	SF				
Bedrooms	3					
Baths	1					

### Construction Drawings

? Construction Plans	\$900.00
? Reverse	\$225.00
? Price Group:	H1

Sub-Total: \$0.00

[Add to Cart](#)

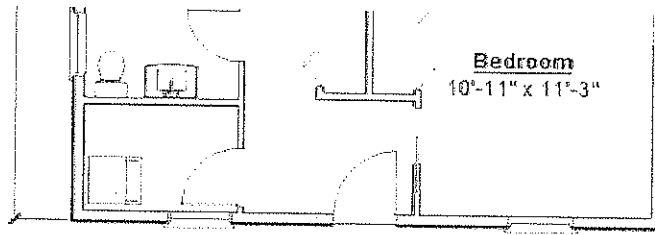
Reminder: This is a copyright protected design. Use of our designs or images without first obtaining a Copyright License from us is a violation of U.S. copyright laws, punishable with fines up to \$150,000, civil damages, and fines specified in our Terms of Use. Making changes, even significant ones, does not change this. "Copyright Infringement" is a polite phrase for Stealing. It hurts us, our staff and our legitimate clients. We pay for information leading to the successful recovery of fines or damages - 603-431-9559 - tips kept confidential

## First Floor Plan

"All we need" with  
prefer Pippin ~~at~~ Front por  
2nd fl  
bgrtz

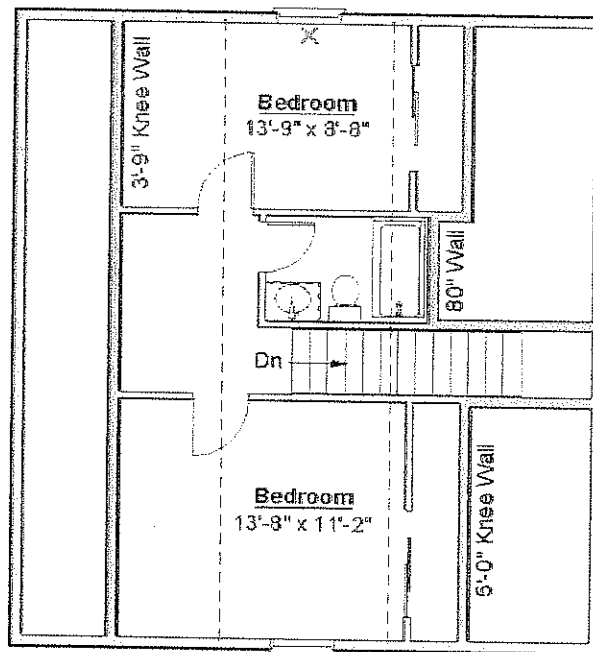
This porch  
on "all we need"





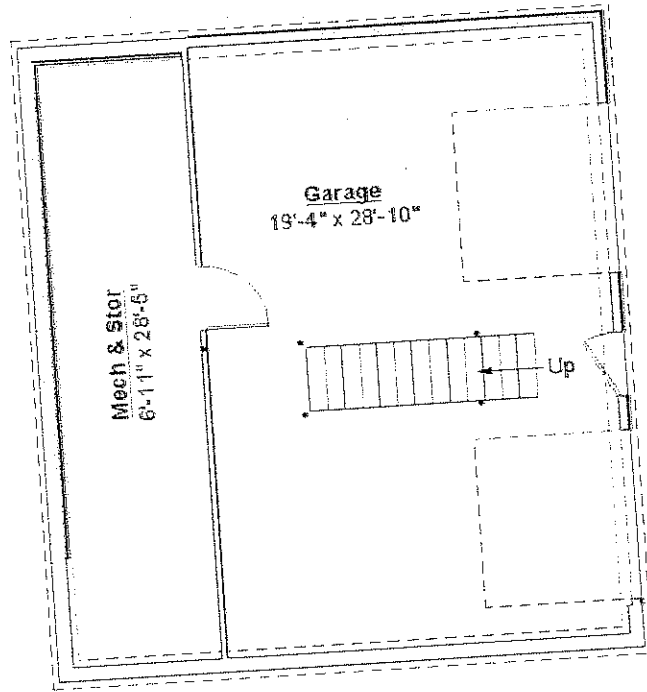
All We Need 192-001  
© Wendy (2009-2010)

**Second Floor Plan**



All We Need - 192-001  
© Wendy (2009-2010)

**Basement Floor Plan**



All We Need 192 001  
 Wendy 2009-2010

## Elevations

