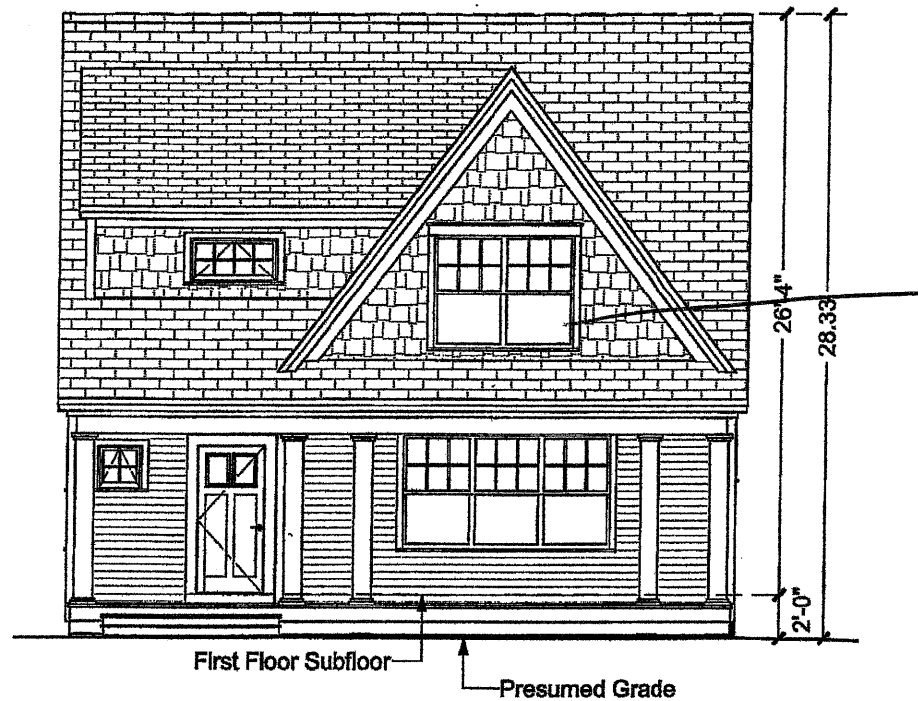


Opal Prime
132.120.v4 GR

© 2009-2019 Art Form Architecture, Inc., all rights reserved. You may not build this design without purchasing a license, even if you make changes. This design may have geographic restrictions.

1. FLIP plan
2.
Artform Home Plans
603-431-9559



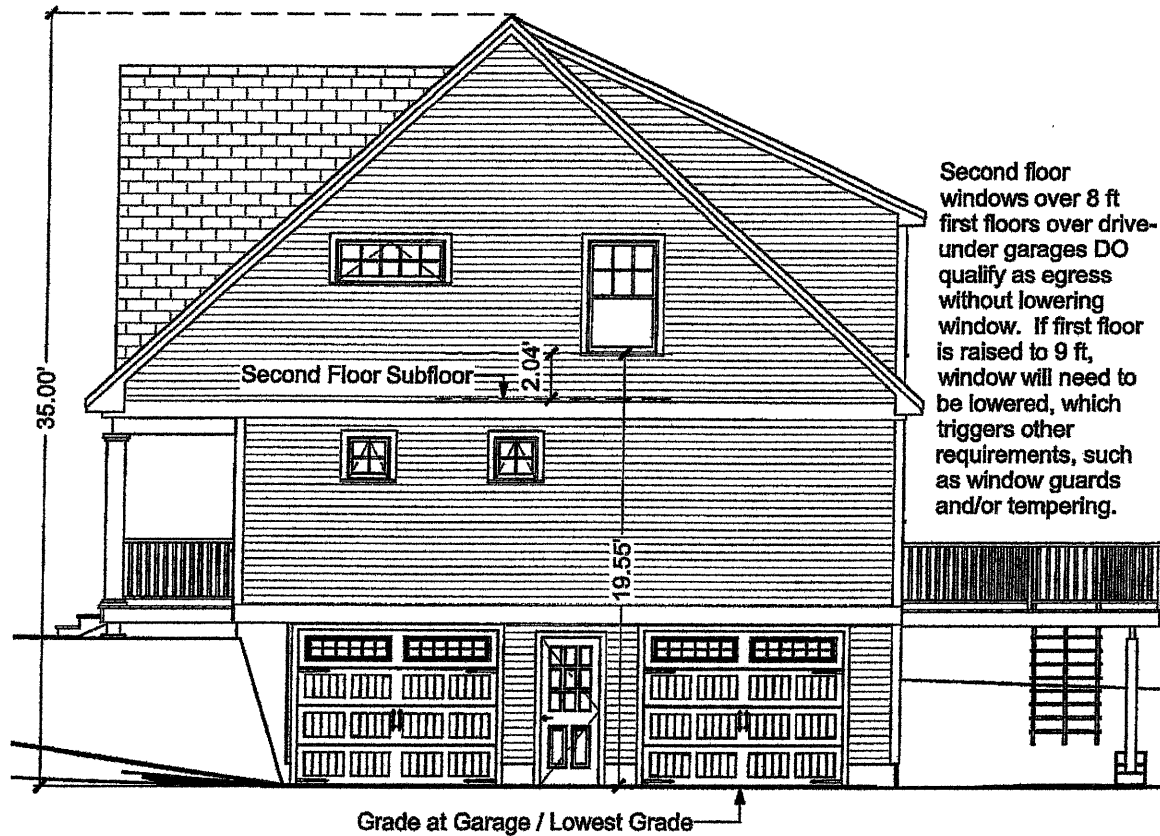
JC

Front Elevation
Scale: 1/8" = 1'-0"

12/2019
Opal Prime
 132.120.v4 GR

© 2009-2019 Art Form Architecture, Inc., all rights reserved. You may not build this design without purchasing a license, even if you make changes. This design may have geographic restrictions.

Artform Home Plans
 603-431-9559



XC

Right Elevation
 Scale: 1/8" = 1'-0"

5/1/2013

Opal Prime

132.120.v4 GR

© 2009-2019 Art Form Architecture, Inc., all rights reserved . You may not build this design without purchasing a license, even if you make changes. This design may have geographic restrictions.

Artform Home Plans

603-431-9559



Remove

XC

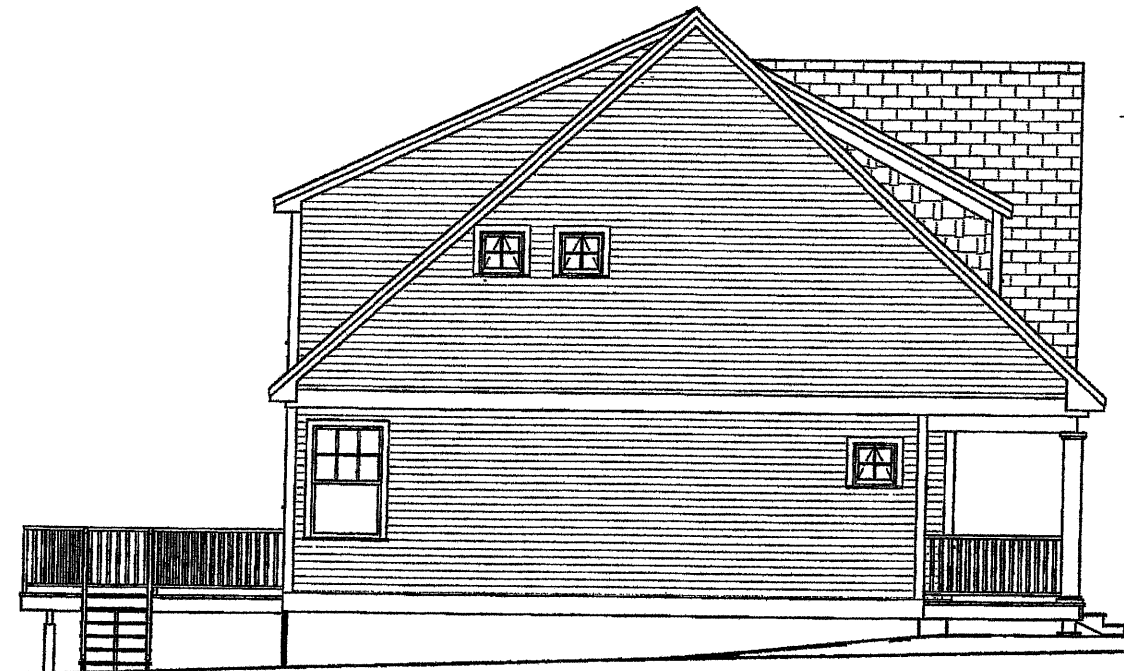
Rear Elevation

Scale: 1/8" = 1'-0"

3/12/19
Opal Prime
132.120.v4 GR

© 2009-2019 Art Form Architecture, Inc., all rights reserved . You may not build this design without purchasing a license, even if you make changes. This design may have geographic restrictions.

 **Artform Home Plans**
603-431-9559



JK

Left Elevation
Scale: 1/8" = 1'-0"

Opal Prime
132.120.v4 GR

2 - 2x2 Awnings 2' from corners

14'

Copyright © 2000 Artform Home Plans, Inc. All rights reserved. You may not reproduce or distribute this plan without a license, even if you are not selling it. Graphic restrictions apply.

Artform Home Plans

603-431-9559

16'

Family Room
Vault
Ceiling
w/10'

Deck
14'x16'

16'

Living Area - First Floor: 888 sq ft
8 ft Ceilings

Study

6'-8" x 7'-6"

Kitchen

10'-5" x 14'-4"

Dining

11'-7" x 14'-4"

Opt Ldry

6'-8" x 6'-1"

Island

Duct Chase

Half Wall & Columns

Lav

Living

19'-6" x 14'-4"

Porch

Railing Required

30'-0"

First Floor Plan

Scale: 1/8" = 1'-0"

Flip plan

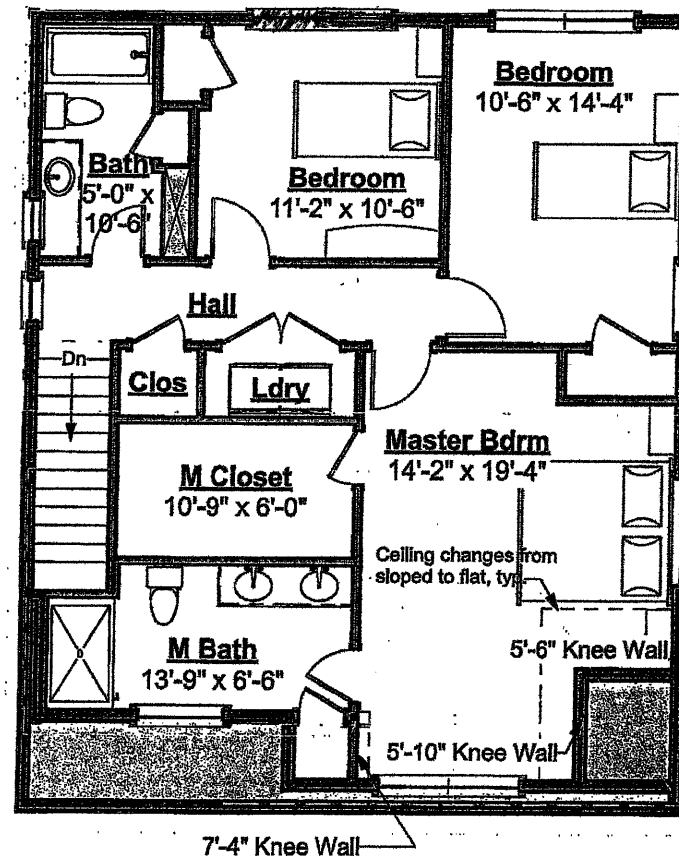
Opal Prime
132.120.v4 GR

© 2009-2019 Art Form Architecture, Inc., all rights reserved . You may not build this design without purchasing a license, even if you make changes. This design may have geographic restrictions.

Artform Home Plans

603-431-9559

Living Area - Second Floor: 988 sq ft
8 ft Ceilings

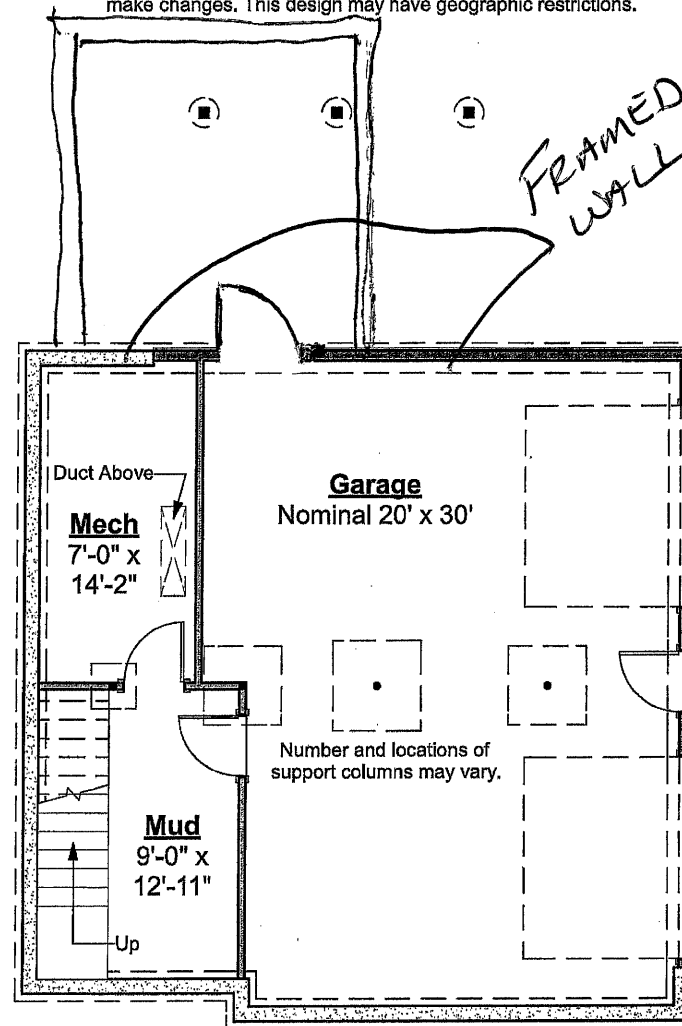


Second Floor Plan
Scale: 1/8" = 1'-0"

Opal Prime
132.120.v4 GR

© 2009-2019 Art Form Architecture, Inc., all rights reserved. You may not build this design without purchasing a license, even if you make changes. This design may have geographic restrictions.

Artform Home Plans
603-431-9559



IMPORTANT BASEMENT NOTES:

- Unless an area is specifically designed as "no posts", additional posts may be required.
- Unless specifically noted otherwise, basement beams will be framed below the floor joists.
- Basement spaces accommodate utilities, mechanical equipment and the horizontal movement of plumbing pipes, electrical wires and heating ducts. Both as part of any Construction Drawings produced based on this design and as future decisions made by the builder, changes to accommodate these items must be expected.
- Basement window locations are dependent on site conditions and utility locations. Clarify number and location with your builder.

04/03/20
12:47 PM EDT
dotloop verified

04/03/20
3:02 PM EDT
dotloop verified

04/02/20
3:03 PM EDT
dotloop verified

Foundation Plan
Scale: 1/8" = 1'-0"