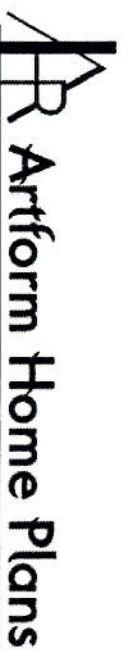


495.130 Robin, Delux

Some features shown are optional. Your contract with your builder governs.



Robin is one of our Artform Signature Bungalows.

The Signature group has been newly updated (winter 2012-2013) to allow many predesigned options including 9 ft first floor ceilings, separate tub and shower in the master, and a walk-in pantry in the kitchen, as well as others. This design can also have square porch columns, appropriately sized.

If you need to meet a 28 ft height limit, the pitch of the main roof can be reduced slightly.

See more plans in the [Artform Signature Bungalows](#) Collection.

	Living Area	Bedrooms	Bathrooms	Ceiling Height Shown	Ceiling Height Possible*
First Floor	1623 SF	2	2.5		
Second Floor	1393 SF	4	3.0	8'-0"	8'-0"
Total Above Grade	3016 SF	6	5.5		
Basement	0 SF	0	0.0	7'-8"	9'-0"

* -- See Major Changes on pricing tab of plan page for cost.

<http://www.artformhomeplans.com/Contact.a5w>
<http://www.artformhomeplans.com/TermsConditions.a5w>

Design is copyright protected, all rights reserved. You may not build without purchasing a license, even if you make changes. Square footages and room dimensions are approximate, and may vary slightly. Not responsible for typographical errors.

36 X 68
2700
OR
51 X 54
2784

495.130 Robin, Delux

Some features shown are optional. Your contract with your builder governs.

First Floor

Living Area: 1623 SF

Beds: 2

Baths: 2.5

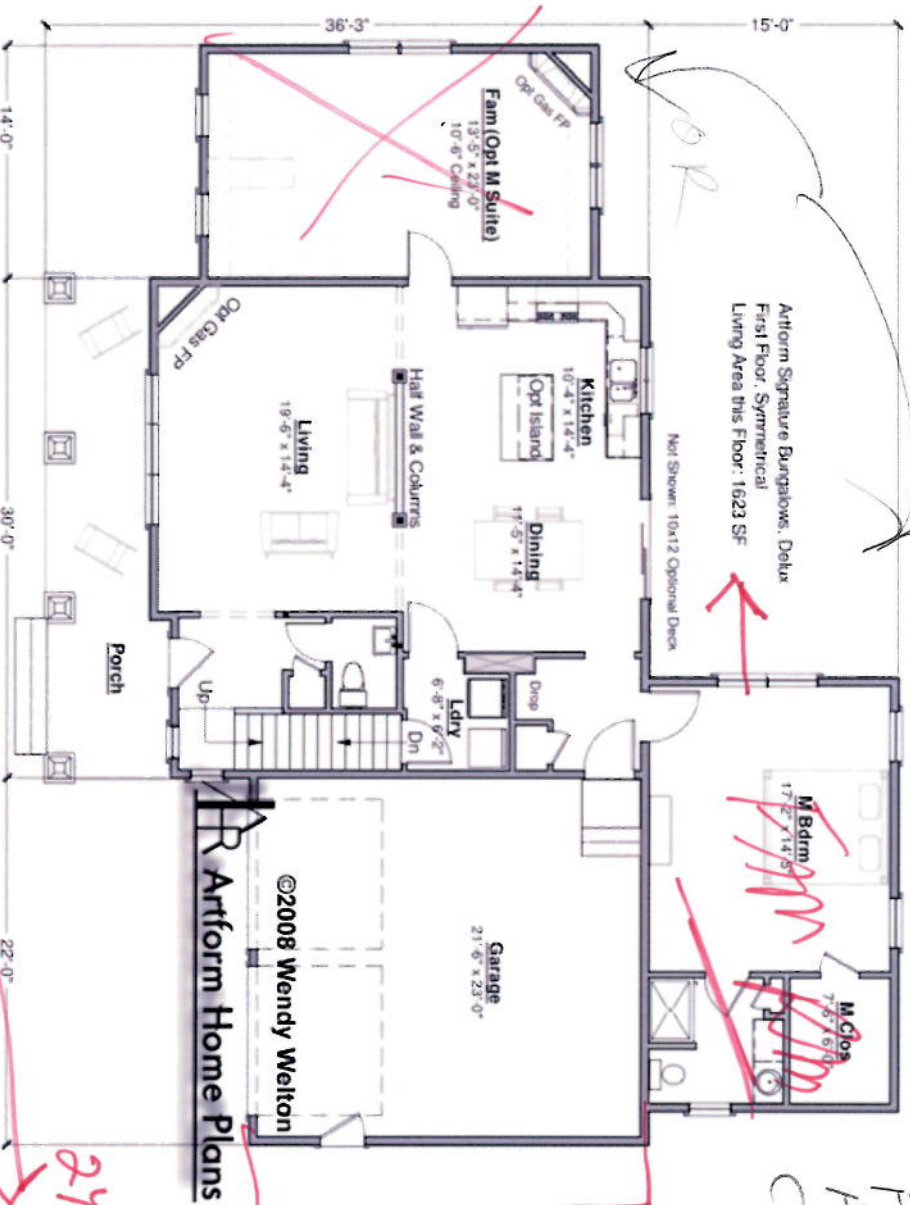
Ceiling Height Shown:
Ceiling Height Possible*:

* -- See Major Changes on pricing tab of plan page for cost.

This first floor applies to all the Artform Signature Bungalows, Delux configuration, Symmetrical (like the Robin, Sea Apple, etc.) In the Asymmetrical designs, the only change is at the porch columns.

See predesigned changes for pantry, 9 ft ceiling and other options.

4/20/15 E/P mints
CLASSIC
PREMIER BARAFFE
5-10m



Artform Home Plans

Some features shown are optional. Your contract with your builder governs.

Living Area: 1393 SF

Beds: 4

Baths: 3.0

Ceiling Height Shown: 8'-0"

Ceiling Height Possible*: 8'-0"

* -- See Major Changes on pricing tab of plan page for cost.

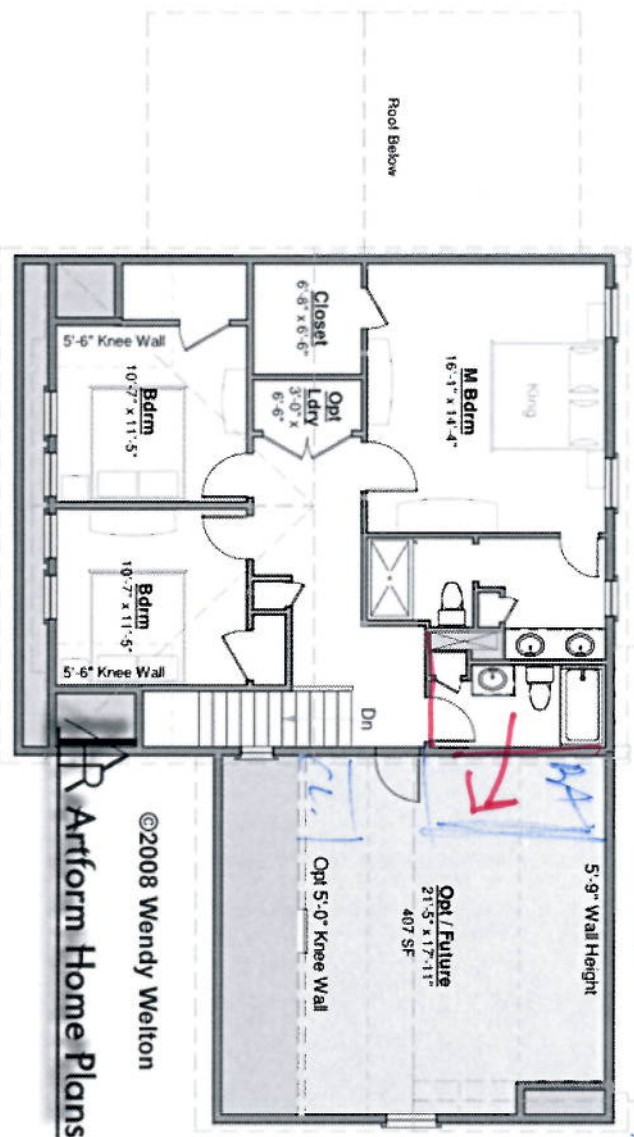
Second floor plans for other symmetrical Arform Signature Bungalows will be similar - like the Sapphire.

See predesigned changes for master bath with separate tub and shower, and other options.

Donnerstag
12/09/15

130 Robert A. Goss

Robin 495.130 Delux
Second Floor
Living Area this Floor: 986 SF



4/20/15

 Artform Home Plans

<http://www.artformhomeplans.com/Contact.a5w>
<http://www.artformhomeplans.com/TermsConditions.a5w>

Design is copyright protected, all rights reserved. You may not build without purchasing a license, even if you make changes. Square footages and room dimensions are approximate, and may vary slightly. Not responsible for typographical errors.

495.130 Robin, Delux

Some features shown are optional. Your contract with your builder governs.

Predesigned options & additions



Predesigned Changes

Order using M code to add a wing to your selected design
Order using P code to change a wing that is on your selected design

Symmetrical looks

The changes on this page can be used on all Artform Signature Burghows.
Symmetrical looks, like the Sapphire or Robin.

Expanded M Closet - Sym
P1008 - remove laundry closet to make larger master closet larger

Master Bath w/separate tub and shower - Sym
P1009 - provide walls and fixtures as shown.

Laundry in bonus over wing
P1010 - provide walls and fixtures as shown.



495.130 Robin, Delux

Some features shown are optional. Your contract with your builder governs.

Basement Floor

Living Area: 0 SF

Beds: 0

Baths: 0.0

Ceiling Height Shown: 7'-8"

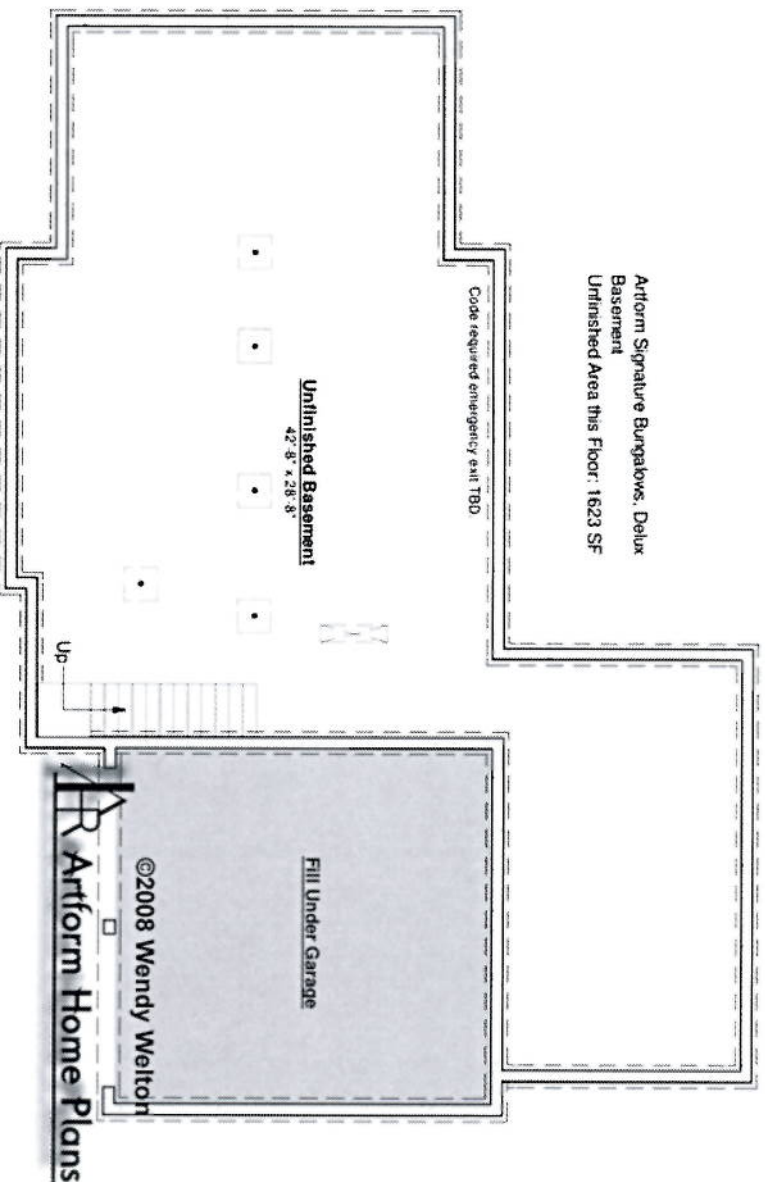
Ceiling Height Possible*: 9'-0"

* -- See Major Changes on pricing tab of plan page for cost.

This is the basement plan for all AFHP Signature Bungalows for the Delux Configuration. If you plan on using the Unfinished space as additional living area, do remember to leave space for your mechanical equipment and electrical panel. We don't list the potential living area as "future" in designs that are not drive-under garages because it skews searches and because a drive-under is more likely to be a daylight basement.

Building codes require the same kind of egress (emergency escape) as for a bedroom. It can a bulkhead or a bedroom "egress" size window with a properly sized window well. And of course, a walk-out door qualifies.

130 Robin: 495



<http://www.artformhomeplans.com/Contact.a5w>
<http://www.artformhomeplans.com/TermsConditions.a5w>

Design is copyright protected, all rights reserved. You may not build without purchasing a license, even if you make changes. Square footages and room dimensions are approximate, and may vary slightly. Not responsible for typographical errors.