

# 428.124 Creme de la Saffron

Some features shown are optional. Your contract with your builder governs.



© 2008-2011 Wendy Welton  
Creme de la Saffron

See more plans in the [Spicy Cottage Colonial](#) Collection.

	Living Area	Bedrooms	Bathrooms	Ceiling Height Shown	Ceiling Height Possible*
First Floor	1209 SF	1	0.5	8'-0"	9'-0"
Second Floor	1516 SF	5	2.0	8'-0"	8'-0"
Total Above Grade	2725 SF	6	2.5		
Basement	0 SF	0	0.0	7'-8"	7'-8"

\* -- See Major Changes on pricing tab of plan page for cost.

<http://www.artformhomeplans.com/Contact.a5w>

<http://www.artformhomeplans.com/TermsConditions.a5w>

**Artform Home Plans**

Got Kids? This version of Creme de la Saffron will handle a small army. The open floor plan will not restrict the size of dining table, Christmas tree, etc. We brought the stairs down into the kitchen instead of the front hall. When you have a house full of kids, their headed for the kitchen or the back yard.... A connector holds a walk-in laundry and a generous mud room. (And yes, the laundry can also go upstairs - it will fit in the connector of the unfinished, behind bifold doors. Converting the study to a bedroom, with a bath in the connector, would be easy. The bonus space over the garage is readily accessible. You could finish it as another bedroom (or even two!) or as a nice play room. The walls on the left side are not bearing - you could take the whole left for a larger master suite if you wished.

Creme de la Saffron has gentler rooflines than the original Saffron, and a bigger second floor (we brought it out over the porch a little). The pretty feature window is in its own Nook, a great place for reading. We called it "Creme de la" because we think it's the best one of all.

MURRAY  
HILL  
4280  
WYMAN

nges.

Some features shown are optional. Your contract with your builder governs.

**Living Area:** 1209 SF

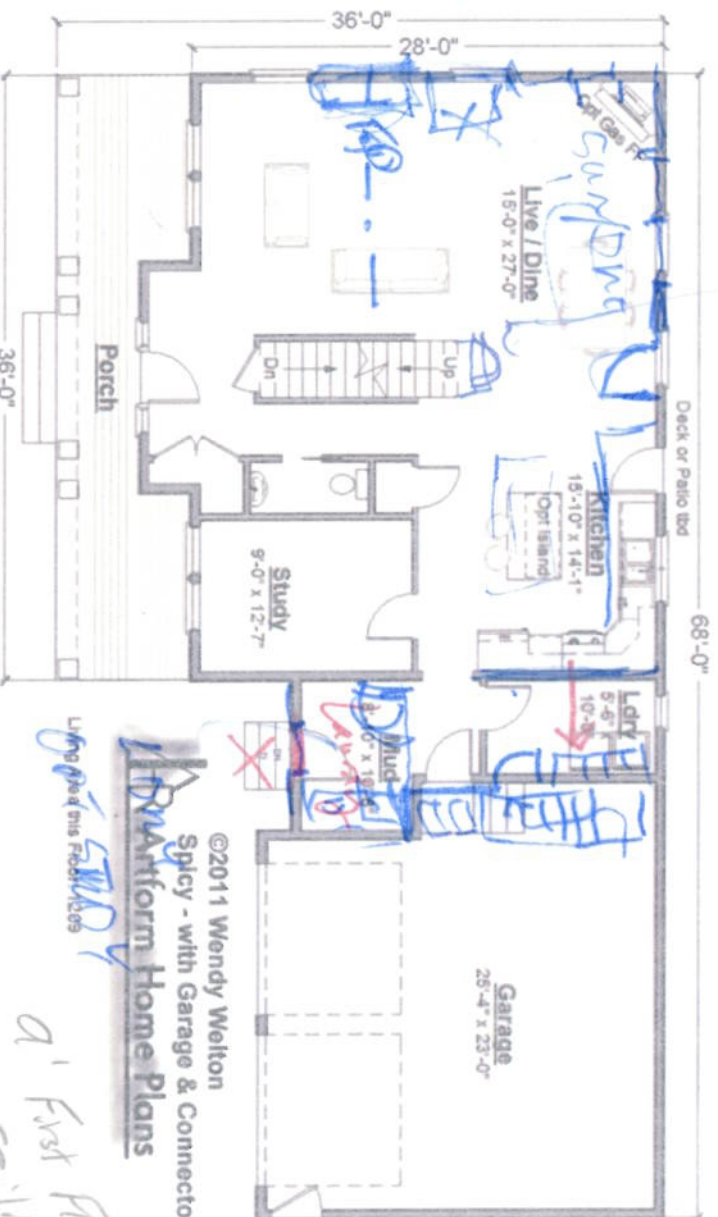
**Beds: 1**

**Baths:** 0.5

**Ceiling Height Shown:** 8'-0"

**Ceiling Height Possible\*:** 9'-0"

\* -- See Major Changes on pricing tab of plan page for cost.



$G^{T-1}$   
- 2 more  
- 1 more

**Artform Home Plans**

©2011 Wendy Welton  
Spicy - with Garage & Connector  
1st Floor Home Plans  
Living Area 1100 sq. ft.  
1st Floor  
Ceilings

<http://www.artformhomeplans.com/Contact.a5w>  
<http://www.artformhomeplans.com/TermsConditions.a5w>

Design is copyright protected, all rights reserved. You may not build without purchasing a license, even if you make changes. Square footages and room dimensions are approximate, and may vary slightly. Not responsible for typographical errors.



# 428.124 Creme de la Saffron

Some features shown are optional. Your contract with your builder governs.

## Second Floor

Living Area: 1516 SF

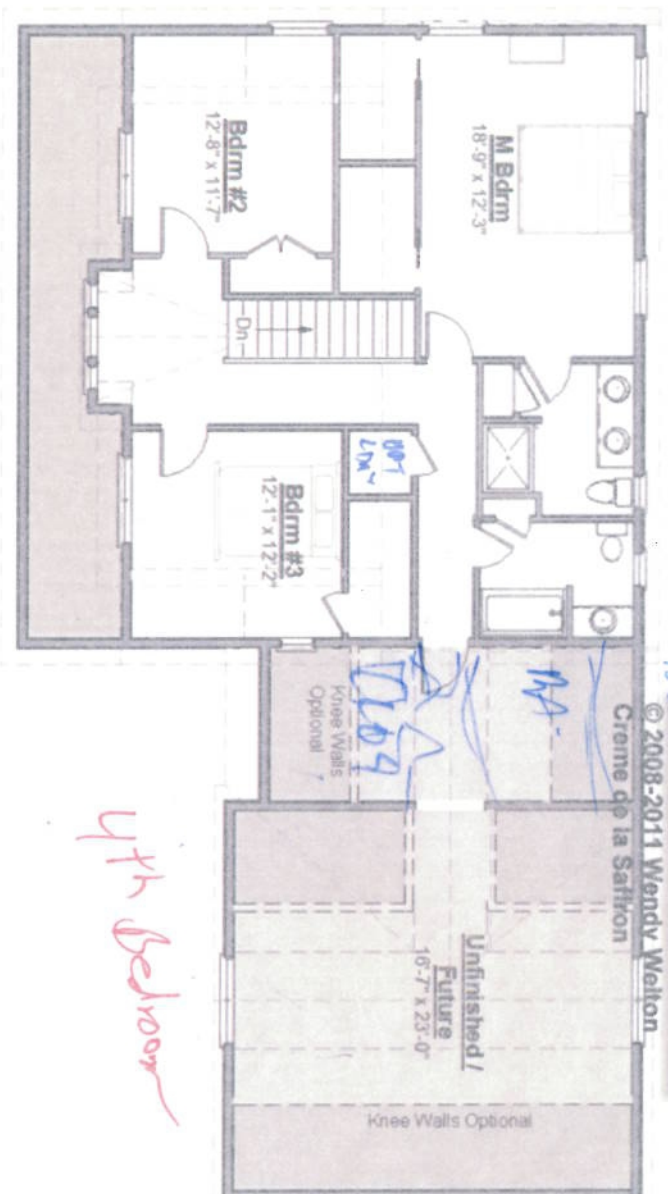
Beds: 5

Baths: 2.0

Ceiling Height Shown: 8'-0"

Ceiling Height Possible\*: 8'-0"

\* -- See Major Changes on pricing tab of plan page for cost.



 **Artform Home Plans**

## 428.124 Creme de la Saffron

Some features shown are optional. Your contract with your builder governs.

### Basement Floor

Living Area: 0 SF

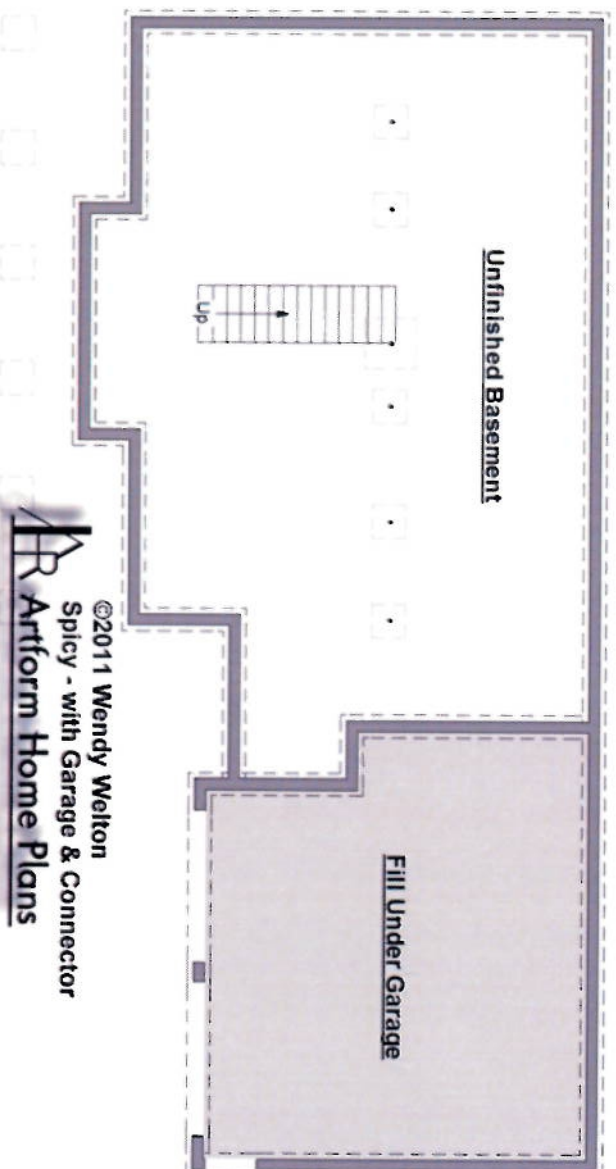
Beds: 0

Baths: 0.0

Ceiling Height Shown: 7'-8"

Ceiling Height Possible\*: 7'-8"

\* -- See Major Changes on pricing tab of plan page for cost.



## 428.124 Creme de la Saffron

Some features shown are optional. Your contract with your builder governs.

### Elevations



© 2008-2011 Wendy-Welton  
Creme de la Saffron



<http://www.artformhomeplans.com/Contact.a5w>  
<http://www.artformhomeplans.com/TermsConditions.a5w>

Design is copyright protected, all rights reserved. You may not build without purchasing a license, even if you make changes. Square footages and room dimensions are approximate, and may vary slightly. Not responsible for typographical errors.