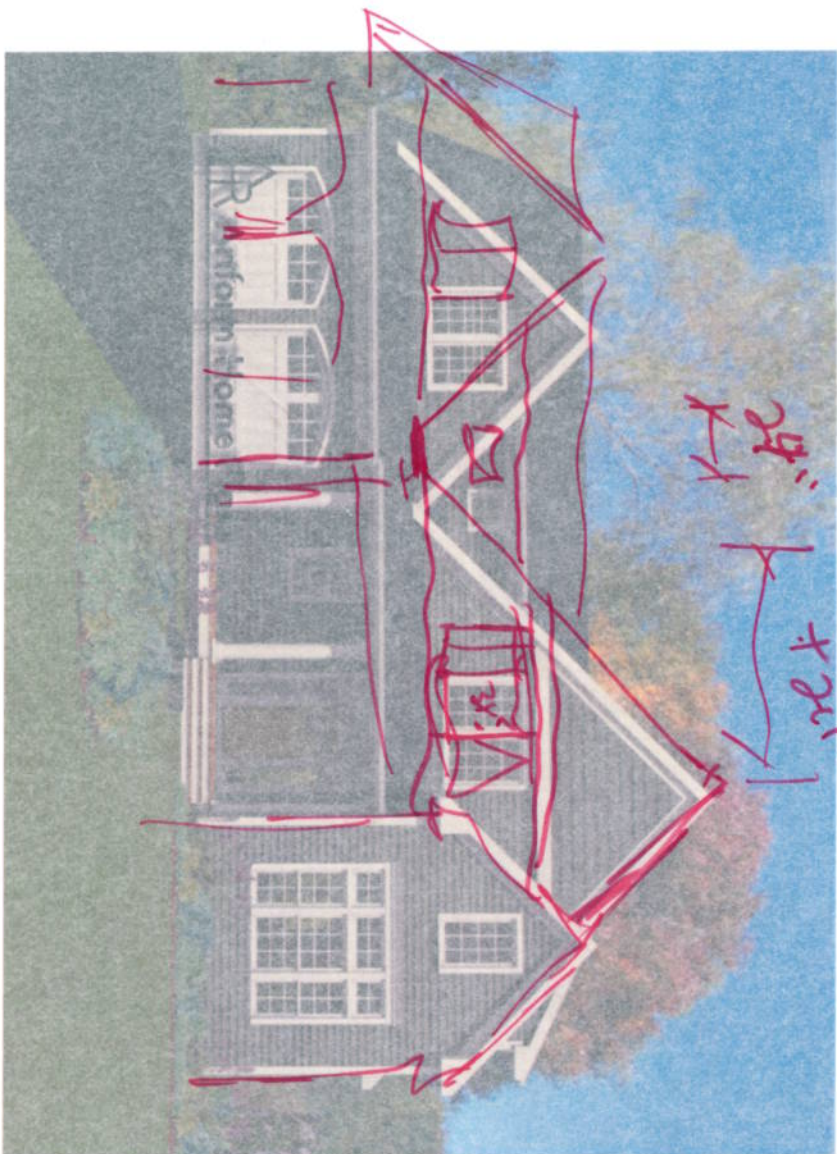


Some features shown are optional. Your contract with your builder governs.



Bosun is designed for property with great views to the rear, but where the footprint has to be somewhat compact. Open flowing spaces bring light in at all ends of the day. The master is a generous retreat. The "family room" is the heart of the house, open to the kitchen for full integration of day to day life. A study/loft over the entry makes a nice quiet getaway or a place to watch for a loved one to pull in the driveway.

4/20/15

60x40

2600

	Living Area	Bedrooms	Bathrooms	Ceiling Height Shown	Ceiling Height Possible
First Floor	1139 SF	0	0.5	8'-0"	8'-0"
Second Floor	1456 SF	3	2.0	8'-0"	8'-0"
Total Above Grade	2595 SF	3	2.5		
Basement	0 SF	0	0.0	7'-8"	7'-8"

* -- See Major Changes on pricing tab of plan page for cost.

<http://www.artformhomeplans.com/Contact.a5w>
<http://www.artformhomeplans.com/TermsConditions.a5w>

Design is copyright protected, all rights reserved. You may not build without purchasing a license, even if you make changes. Square footages and room dimensions are approximate, and may vary slightly. Not responsible for typographical errors.

Some features shown are optional. Your contract with your builder governs.

Living Area: 1139 SF

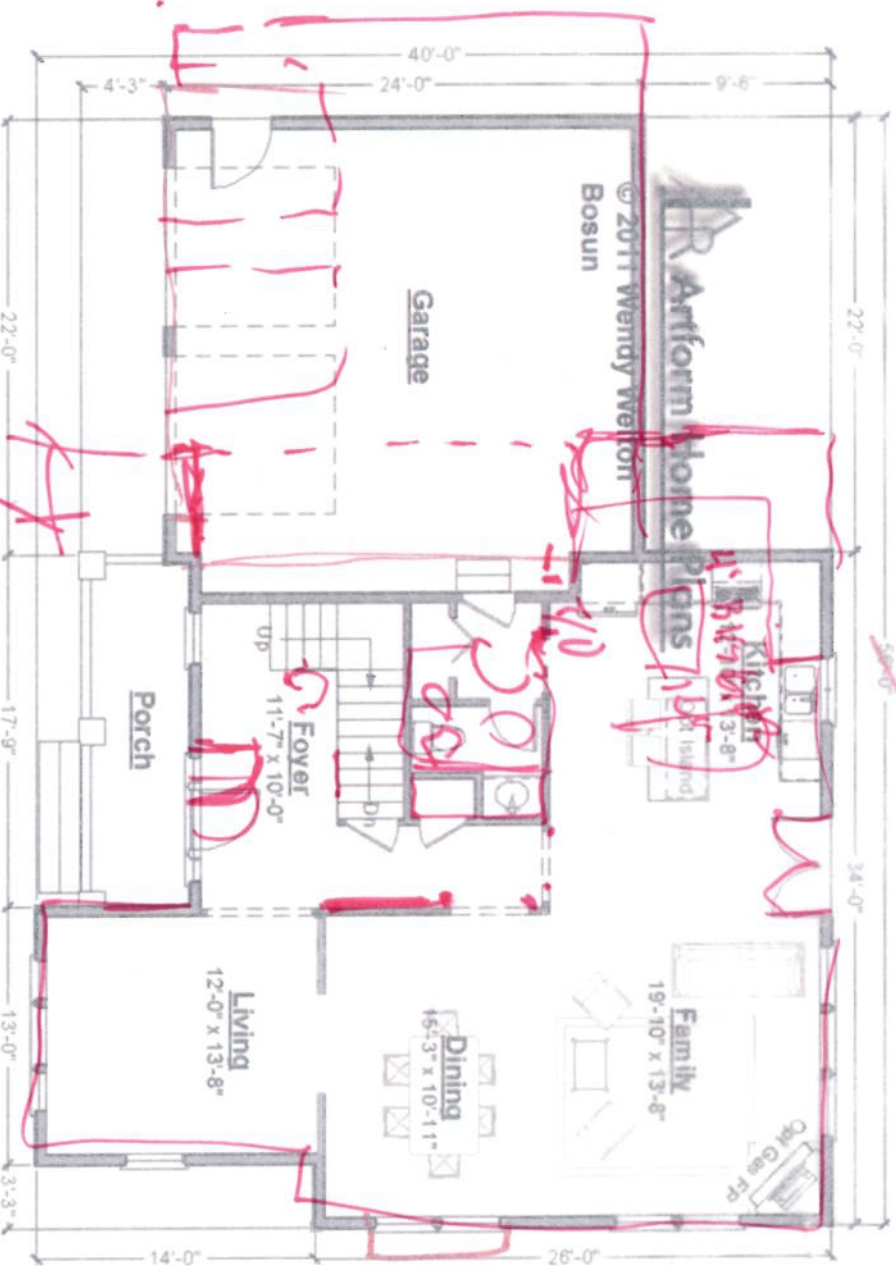
Beds: 0

Baths: 0.5

Ceiling Height Shown: 8'-0"

Calling Height Possible*: 8'-0"

* -- See Major Changes on pricing tab of plan page for cost.



Cellar

 Artform Home Plans

<http://www.artformhomeplans.com/Contact.a5w>
<http://www.artformhomeplans.com/TermsConditions.a5w>

Design is copyright protected, all rights reserved. You may not build without purchasing a license, even if you make changes. Square footages and room dimensions are approximate, and may vary slightly. Not responsible for typographical errors.

400.002 Bosun

Some features shown are optional. Your contract with your builder governs.

Second Floor

Living Area: 1456 SF

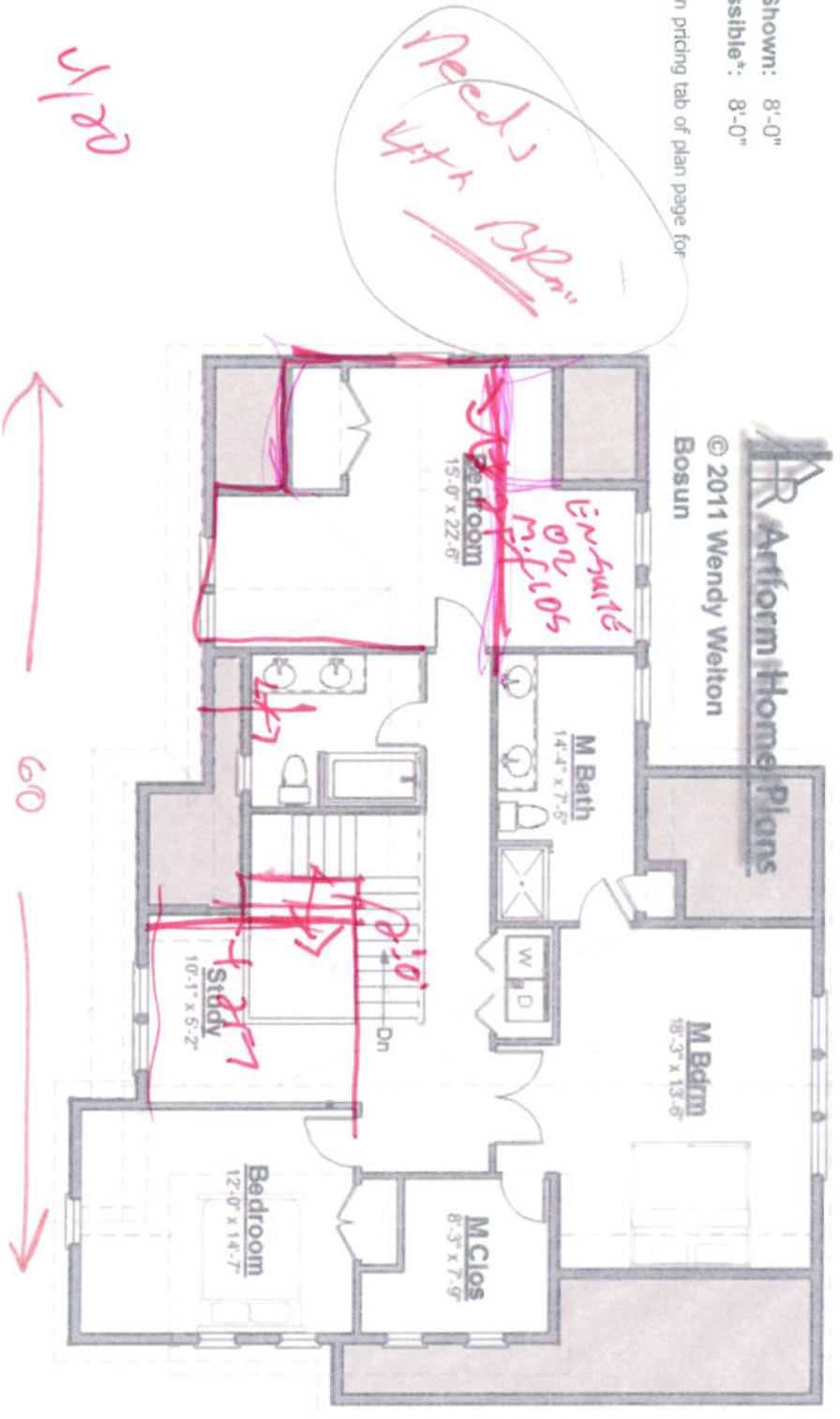
Beds: 3

Baths: 2.0

Ceiling Height Shown: 8'-0"

Ceiling Height Possible*: 8'-0"

* -- See Major Changes on pricing tab of plan page for cost.



400.002 Bosun

Some features shown are optional. Your contract with your builder governs.

Basement Floor

Living Area: 0 SF

Beds: 0

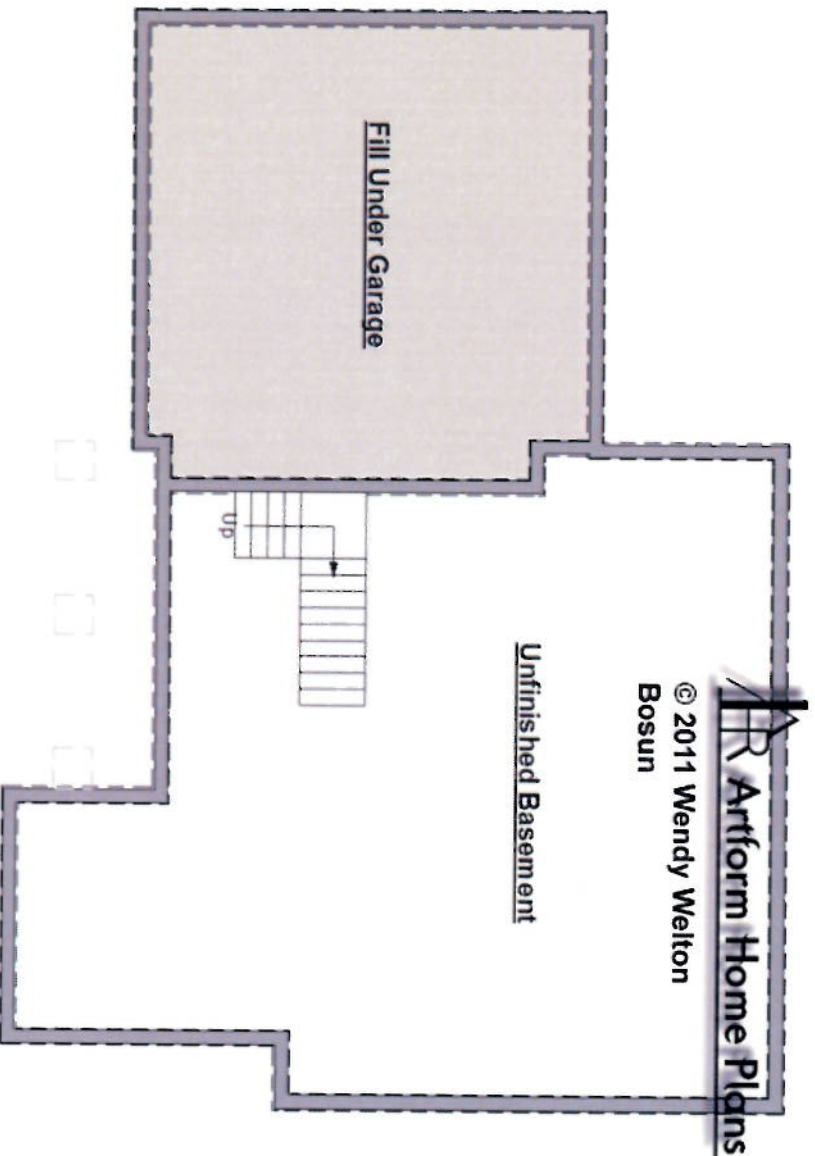
Baths: 0.0

Ceiling Height Shown: 7'-8"

Ceiling Height Possible*: 7'-8"

*-- See Major Changes on pricing tab of plan page for cost.

 **Artform Home Plans**

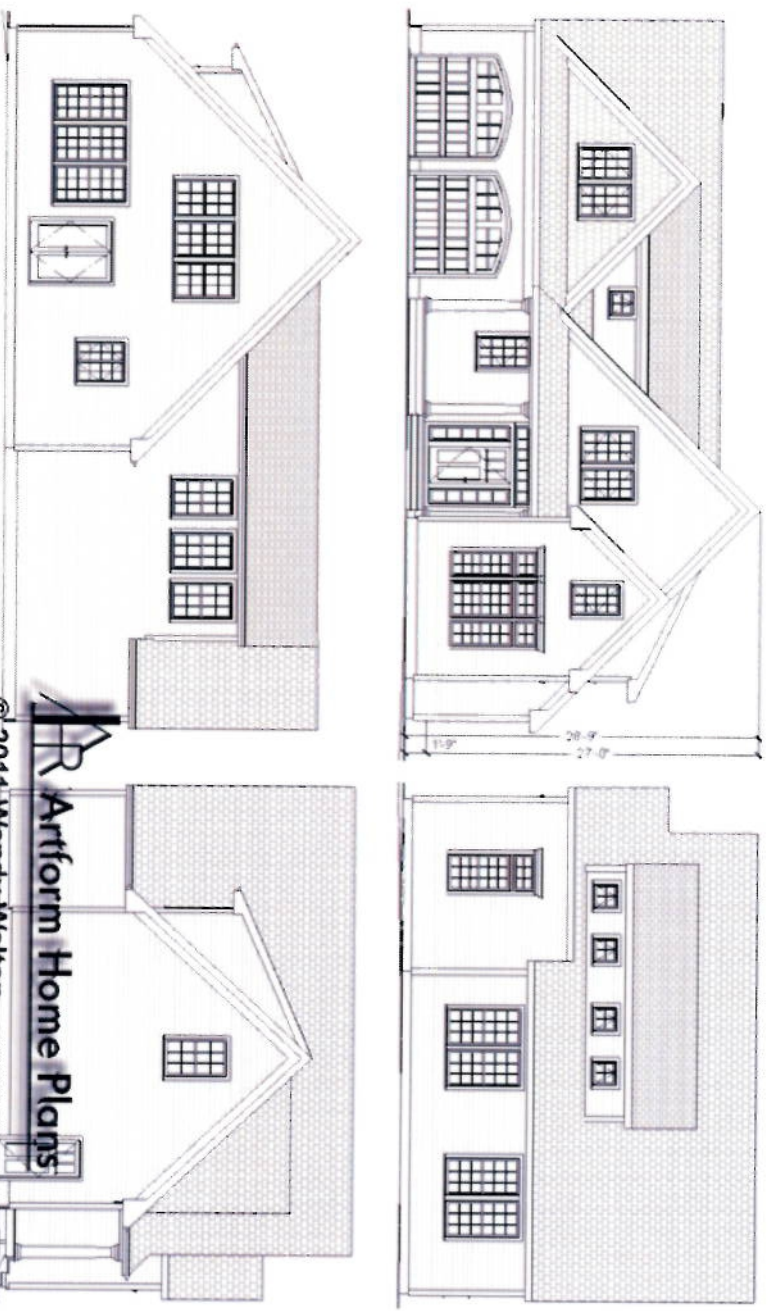


400.002 Bosun

Some features shown are optional. Your contract with your builder governs.

Elevations

 Artform Home Plans



 Artform Home Plans
© 2011 Wendy Welton
Bosun

<http://www.artformhomeplans.com/Contact.a5w>
<http://www.artformhomeplans.com/TermsConditions.a5w>

Design is copyright protected, all rights reserved. You may not build without purchasing a license, even if you make changes. Square footages and room dimensions are approximate, and may vary slightly. Not responsible for typographical errors.

400.002 Bosun

Some features shown are optional. Your contract with your builder governs.

Some items shown are optional and/or may vary, including but not limited to:

1. Fireplace and it's surround or mantel
2. Kitchen - island, cabinet style & trim, countertop material, etc.
3. Door styles and trim
4. Window grilles and trim, window treatments
5. Stair balusters or low walls at stairs
6. Lighting
7. Material selections (flooring, siding, roofing, paint colors, etc.)
8. Other furnishings
9. Landscaping, paving and walkways
10. Gutters, shutters and other exterior trim components
11. Deck size, railing style, stair location, etc.
12. Amount of exposed basement and/or wood framed walls at basement.

What your builder owes you is governed by your signed agreement with your builder, and any referenced specifications or markups.

These images are not of any specific building site. Sun and view through windows will vary, as will the site around the house on the exterior and the slope of the land.

